

# Kenny Leung

Hair & Makeup | Makeup | Mens Grooming

Beauty





**Kenny Leung**

Hair & Makeup | Makeup | Mens Grooming  
Beauty

**CAROLHAYES  
MANAGEMENT**  
CREATIVE ARTIST & STYLE MANAGEMENT

020 7482 1555

[www.carolhayesmanagement.co.uk](http://www.carolhayesmanagement.co.uk)



**Kenny Leung**

Hair & Makeup | Makeup | Mens Grooming  
Beauty



**CAROLHAYES  
MANAGEMENT**  
CREATIVE ARTIST & STYLE MANAGEMENT

020 7482 1555  
[www.carolhayesmanagement.co.uk](http://www.carolhayesmanagement.co.uk)



**Kenny Leung**

Hair & Makeup | Makeup | Mens Grooming  
Beauty

**CAROLHAYES  
MANAGEMENT**  
CREATIVE ARTIST & STYLE MANAGEMENT

020 7482 1555

[www.carolhayesmanagement.co.uk](http://www.carolhayesmanagement.co.uk)



**Kenny Leung**

Hair & Makeup | Makeup | Mens Grooming  
Beauty



// BEAUTY

# COLOUR *sense*

Expert tips to help you  
make the best use of your  
skin and lip products

PHOTOGRAPHY MARI-ANNE BALIE  
MAKE-UP KENNY LEUNG

**CAROLHAYES  
MANAGEMENT**  
CREATIVE ARTIST & STYLE MANAGEMENT

020 7482 1555  
[www.carolhayesmanagement.co.uk](http://www.carolhayesmanagement.co.uk)

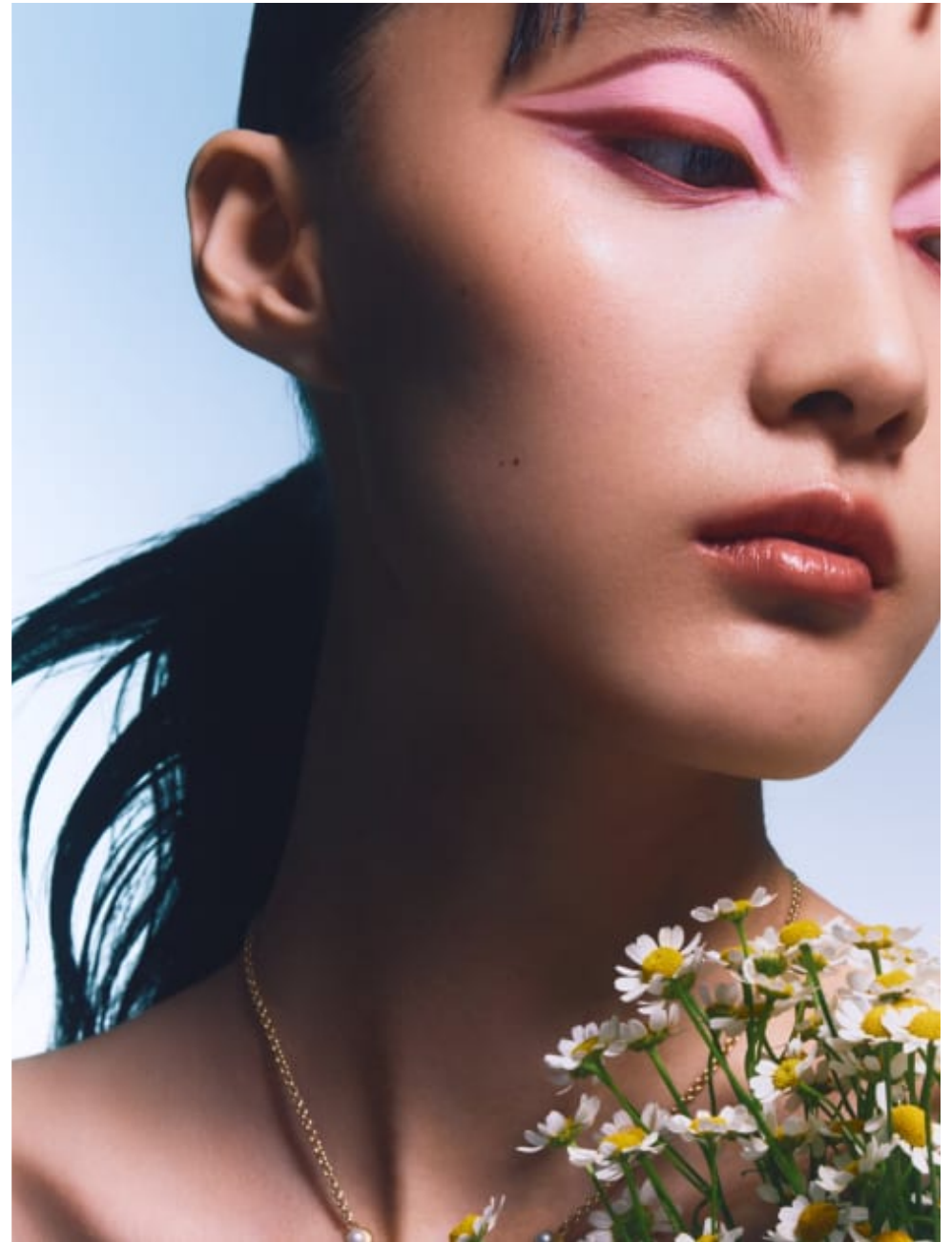


**Kenny Leung**

Hair & Makeup | Makeup | Mens Grooming  
Beauty

**CAROLHAYES  
MANAGEMENT**  
CREATIVE ARTIST & STYLE MANAGEMENT

020 7482 1555  
[www.carolhayesmanagement.co.uk](http://www.carolhayesmanagement.co.uk)



**Kenny Leung**

Hair & Makeup | Makeup | Mens Grooming  
Beauty

**CAROLHAYES  
MANAGEMENT**  
CREATIVE ARTIST & STYLE MANAGEMENT

020 7482 1555

[www.carolhayesmanagement.co.uk](http://www.carolhayesmanagement.co.uk)



October 2025 / NYA- 157



**Kenny Leung**

Hair & Makeup | Makeup | Mens Grooming  
Beauty

**CAROLHAYES  
MANAGEMENT**  
CREATIVE ARTIST & STYLE MANAGEMENT

020 7482 1555  
[www.carolhayesmanagement.co.uk](http://www.carolhayesmanagement.co.uk)



**Kenny Leung**

Hair & Makeup | Makeup | Mens Grooming  
Beauty



**CAROLHAYES  
MANAGEMENT**  
CREATIVE ARTIST & STYLE MANAGEMENT

020 7482 1555  
[www.carolhayesmanagement.co.uk](http://www.carolhayesmanagement.co.uk)



**Kenny Leung**

Hair & Makeup | Makeup | Mens Grooming  
Beauty



**CAROLHAYES  
MANAGEMENT**  
CREATIVE ARTIST & STYLE MANAGEMENT

020 7482 1555  
[www.carolhayesmanagement.co.uk](http://www.carolhayesmanagement.co.uk)



**Kenny Leung**

Hair & Makeup | Makeup | Mens Grooming  
Beauty

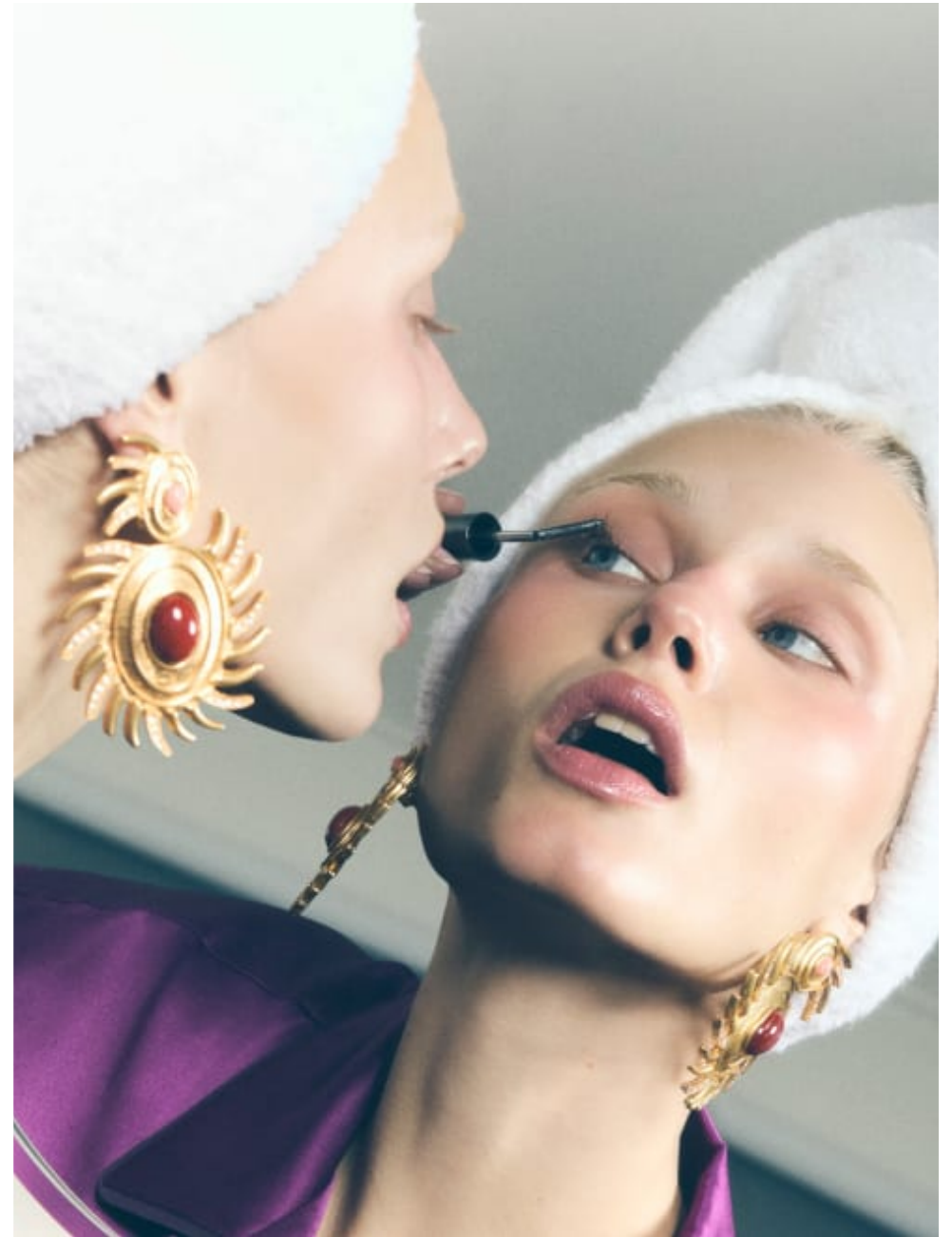


Photography: Elin Carl Bergström

December 2005 / №4 - 165

**CAROLHAYES  
MANAGEMENT**  
CREATIVE ARTIST & STYLE MANAGEMENT

020 7482 1555  
[www.carolhayesmanagement.co.uk](http://www.carolhayesmanagement.co.uk)



**Kenny Leung**

Hair & Makeup | Makeup | Mens Grooming  
Beauty

**CAROLHAYES  
MANAGEMENT**  
CREATIVE ARTIST & STYLE MANAGEMENT

020 7482 1555  
[www.carolhayesmanagement.co.uk](http://www.carolhayesmanagement.co.uk)



**Kenny Leung**

Hair & Makeup | Makeup | Mens Grooming  
Beauty

**CAROLHAYES  
MANAGEMENT**  
CREATIVE ARTIST & STYLE MANAGEMENT

020 7482 1555

[www.carolhayesmanagement.co.uk](http://www.carolhayesmanagement.co.uk)



**Kenny Leung**

Hair & Makeup | Makeup | Mens Grooming  
Beauty

**CAROLHAYES  
MANAGEMENT**  
CREATIVE ARTIST & STYLE MANAGEMENT

020 7482 1555

[www.carolhayesmanagement.co.uk](http://www.carolhayesmanagement.co.uk)



**Kenny Leung**

Hair & Makeup | Makeup | Mens Grooming  
Beauty



HAIR MAIKO KOMORI  
PHOTOGRAPHY ASSISTANT ALEX MACCHIARELLI  
NAILS DANMI O'MAHONEY  
CASTING DIRECTOR JASMINE PERRIER  
RETOUCHING SHUBHAM SINGH  
MODEL DARIA MORMA @ MHP MODELS

GB-DAYD  
Bag

ELISSA POPPY  
Dress

Eyes: as opposite

Cheeks: as opposite

Lips:  
Natasha Moor Legendary Lip Liner in  
Showstopper  
L'Oréal Glaze Craze Tinted Lip Serum in  
Peach Glaze

**CAROLHAYES  
MANAGEMENT**  
CREATIVE ARTIST & STYLE MANAGEMENT

020 7482 1555  
[www.carolhayesmanagement.co.uk](http://www.carolhayesmanagement.co.uk)



**Kenny Leung**

Hair & Makeup | Makeup | Mens Grooming  
Beauty

**CAROLHAYES  
MANAGEMENT**  
CREATIVE ARTIST & STYLE MANAGEMENT

020 7482 1555

[www.carolhayesmanagement.co.uk](http://www.carolhayesmanagement.co.uk)



**HOW TO WEAR  
COLOURFUL  
MAKE-UP IN A FUN  
WAY:**

- 1 Apply a pastel pink eyeshadow on the lids and a baby blue eyeshadow on the lower lash line
- 2 Add contrast by applying blue mascara on the upper lashes and pink mascara on the bottom lashes
- 3 Complete the look using a peach blush and a peachy terracotta lipstick

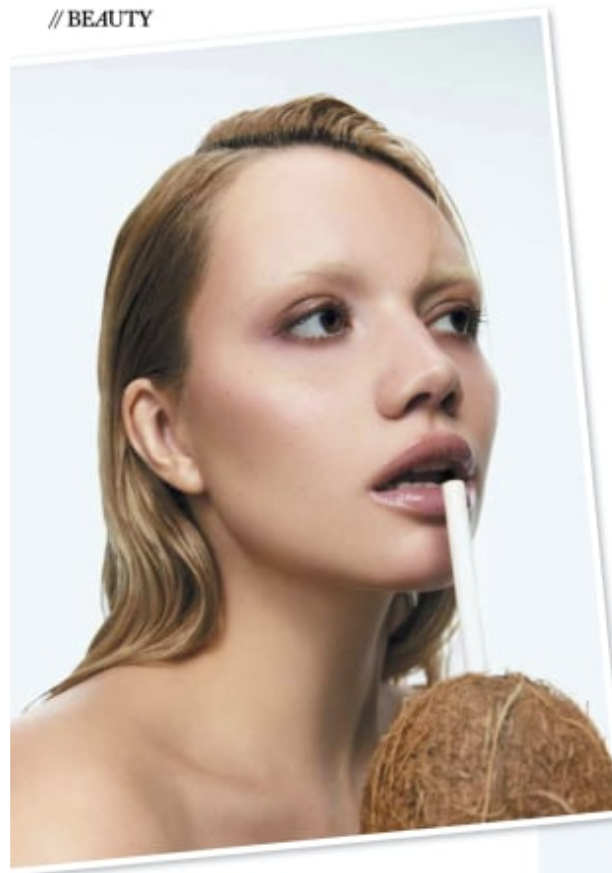
**MILD MARSA**  
Top

**Eyes:**  
Dancea Myriks ColorX  
Paleta Waterproof Matte Liquid  
Pigment in Bunny  
MAC Eye Shadow in Sash  
Flower  
Victoria Beckham EyeWear  
Longwear Eyeshadow Stick in  
Carrizosa  
Dear Diorflow Waterproof  
Mascara in 258 Bleu

**Cheeks:**  
OneSize Cheek Clipper 3D  
Blush Trio Palette in Freshly  
Peach

**Lips:**  
Makeupguy Light Petal Soft Luxe  
Misty Lipstick in 982

// BEAUTY



**Skin:**  
Eucerin Super Rich Face Stick  
Dear Dahlia Prime Layer Glow Primer  
Erloran CC Crema in Clair  
Makeupguy Light Radiant Double-Color Concealer in 901  
Rare Beauty Warm Wishes Glowless Bronzer Stick in Happy Sun  
Hugoboss True Dimension Radiance Bath in Light  
Nars Light Reflecting Makeup Setting Mat

**Eyes:**  
Makeup by Mario Master Mates Eyeshadow Palette: The Original  
Mac Eyeshadow in Gesso  
Haus Labs Optic Intensity Eco-Eyeliner in White Onyx Matte

**Lips:**  
Rare Beauty Kind Words Matte Lip Liner in Tantalus  
Fenty Beauty Gloss Bomb Skin in Beutiful Donut

**HOW TO CREATE A  
MOCHA  
MOUSSE  
MAKE-UP LOOK:**

- 1 Apply a dark brown eyeshadow on the lash line
- 2 Blend it upwards (towards the crease) to create a soft smoky eye
- 3 Smudge a medium brown eyeshadow on the lower lash line
- 4 Apply a matt white eyeshadow on the inner corners



**Kenny Leung**

Hair & Makeup | Makeup | Mens Grooming  
Beauty

**CAROLHAYES  
MANAGEMENT**  
CREATIVE ARTIST & STYLE MANAGEMENT

020 7482 1555  
www.carolhayesmanagement.co.uk



**Skincare:**  
 Rescue From Mama Flout  
 Eye Pearl or La Zone Rose

**Eyes:**  
 My Beauty Box Bismarck 43  
 Colour Palette  
 Liquid Mascara  
 Caramel Black  
 Eye Liner  
 In Sugarcoat

**Cheeks:**  
 Overline Cheek Cushion  
 03 Blush  
 To in Powder or  
 Absorbent  
 Sunbath  
 Pure Beauty Soft Peach  
 Luminous Powder Blush  
 in Glow

**Lips:**  
 Pure Beauty Lip  
 Chocolate Mega Lip  
 Pencil in Nude Velvet  
 Matte Shiner  
 1 use Matte  
 Liquid Lipstick in 401  
 Chelsea Rose

**HOW TO GET A PINK  
 MONOCHROME  
 MAKE-UP LOOK:**

- 1 Trimshape and blend a dark pink eyeshadow on the outer half of the lash line
- 2 Add a soft pink eyeliner on the inner corners
- 3 Apply a pink liquid blush on the cheeks, towards the temples
- 4 Optional: using a clean mascara brush, apply pink eye paint on the eyebrows

March 2025 / Niv 123



**Eyes:**  
 Lancôme Idôle Tint Longwear Liquid Eyeshadow  
 and Eyeliner in 04 Sierra  
 Dior Backstage Eye Palette in 003 Warm Essentials

**Lips:**  
 Glossier Lip Line in Grip  
 Wet Lip Dew in Cherry

**HOW TO GET THE  
 OMBRE BLUSH  
 LOOK:**

- 1 Apply an orange-coloured liquid blush with a beauty sponge on the highest point of the cheekbones
- 2 Using the same sponge, add a bright yellow blush on the apples of the cheeks
- 3 Complete the look with a vibrant pink lip oil

March 2025 / Niv 125

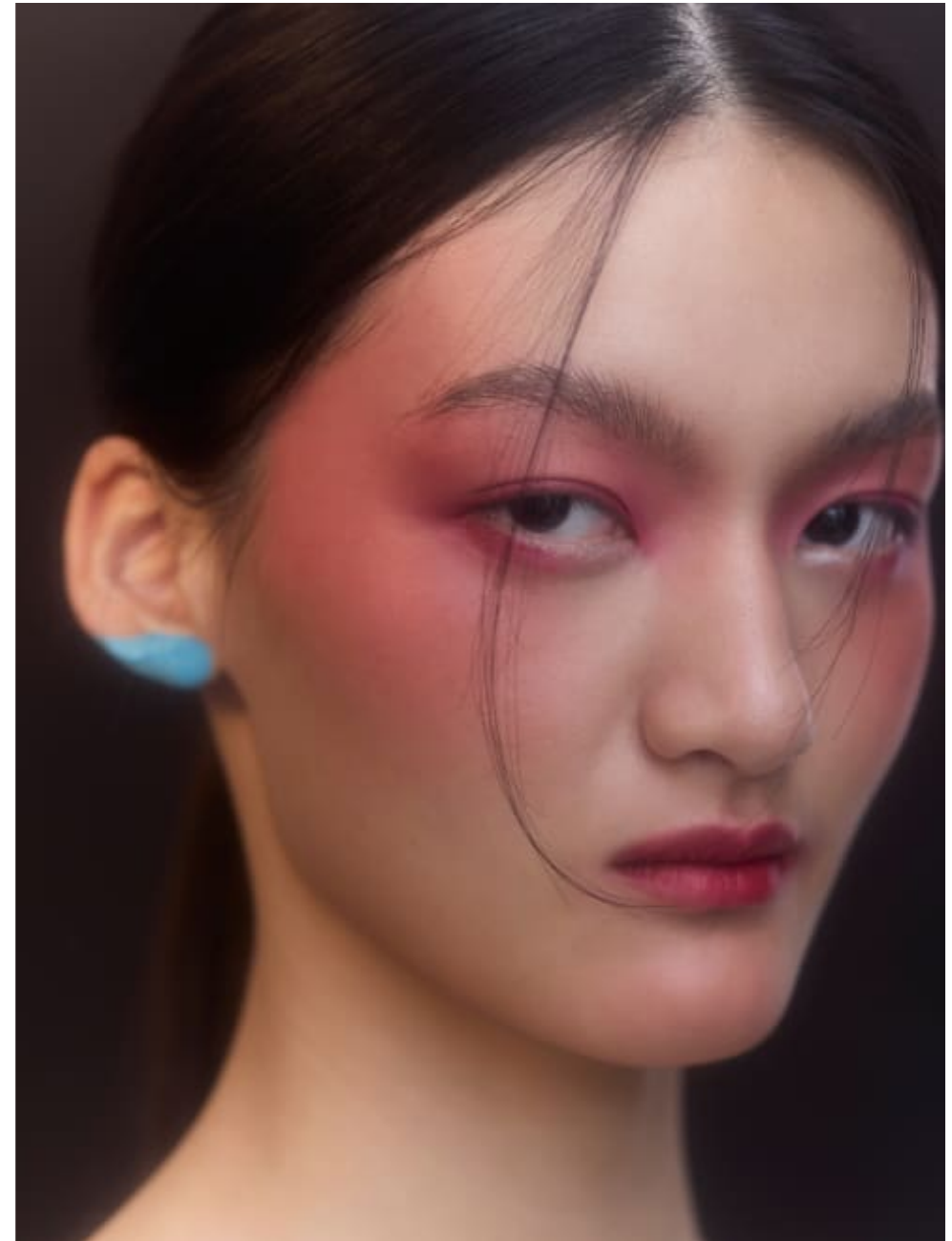
**HOW TO WEAR  
LIME GREEN  
EYESHADOW:**

- 1** Apply a lime green cream eyeshadow on the eyelid base
- 2** Blend and soften the edges with a bright yellow eyeshadow
- 3** Create a halo effect by adding a dark green eyeshadow on the outer and inner corners
- 4** Finish off the look with a shimmering lime green eyeshadow on the inner corners

**Eyes:**  
Half Magic ChromaAddiction  
Matte Eye Paint & Liner in  
We Are Alone Chastreuse  
KinChi Color Beauty Citrus  
Green Makeup Palette in  
03 Lime

**Cheeks:**  
Halo Beauty Blush Filter  
Liquid Blush in Cotton Candy

**Lips:**  
Fenty Beauty Trace It  
Out! Longwear Waterproof  
Pencil Lip Liner in  
Prêt à Gêler  
Hugoboss Phantom  
Volumizing Glossy Balm in  
Mist 115

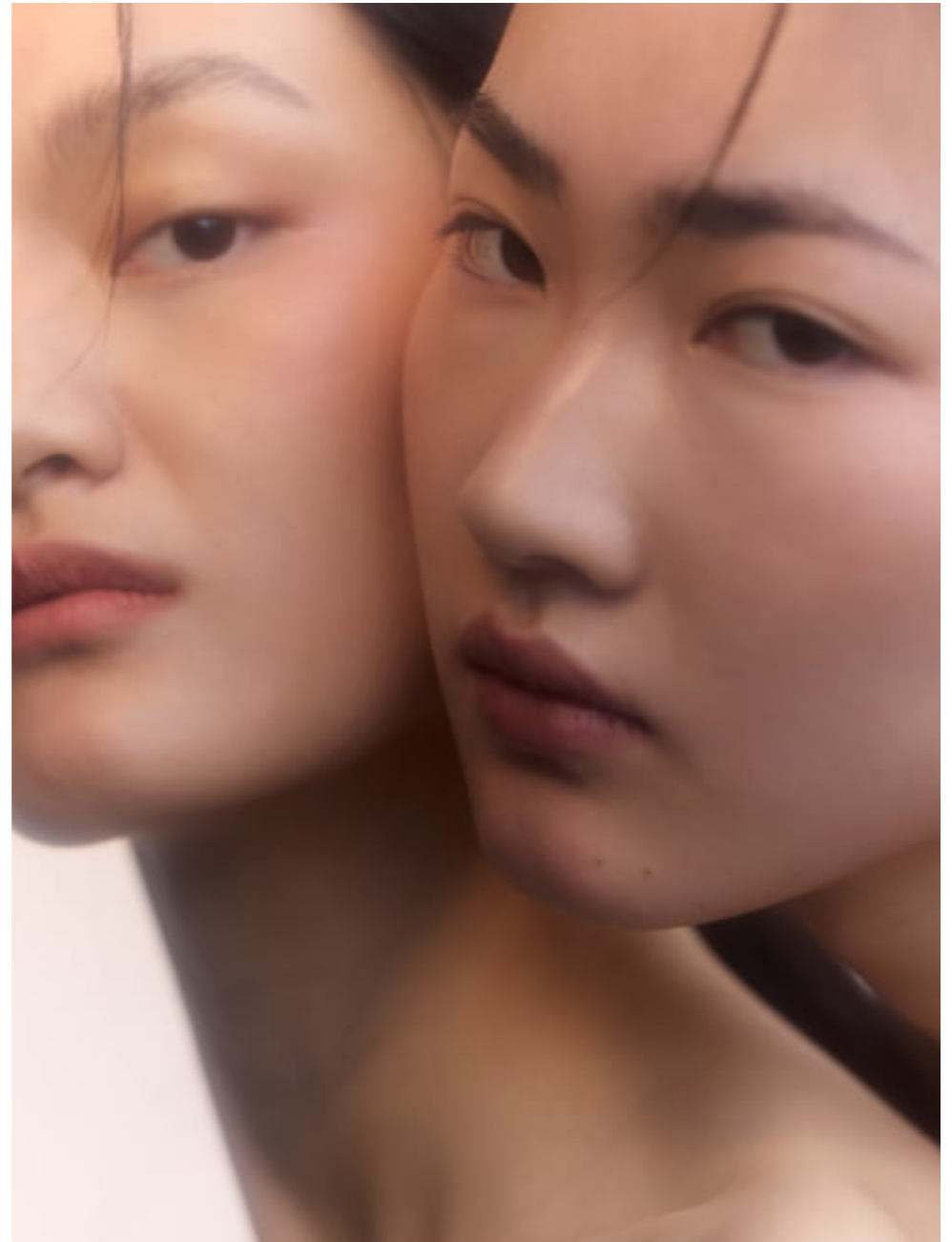


**Kenny Leung**

Hair & Makeup | Makeup | Mens Grooming  
Beauty

**CAROLHAYES  
MANAGEMENT**  
CREATIVE ARTIST & STYLE MANAGEMENT

020 7482 1555  
[www.carolhayesmanagement.co.uk](http://www.carolhayesmanagement.co.uk)



**Kenny Leung**

Hair & Makeup | Makeup | Mens Grooming  
Beauty

**CAROLHAYES  
MANAGEMENT**  
CREATIVE ARTIST & STYLE MANAGEMENT

020 7482 1555

[www.carolhayesmanagement.co.uk](http://www.carolhayesmanagement.co.uk)

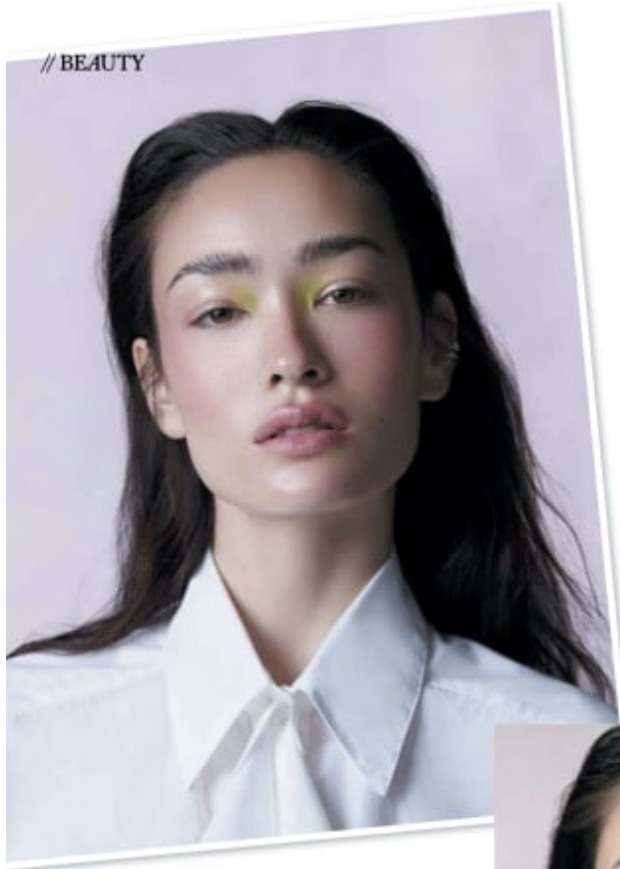


**Kenny Leung**  
Hair & Makeup | Makeup | Mens Grooming  
Beauty

**CAROLHAYES  
MANAGEMENT**  
CREATIVE ARTIST & STYLE MANAGEMENT

020 7482 1555  
[www.carolhayesmanagement.co.uk](http://www.carolhayesmanagement.co.uk)

// BEAUTY



### HOW to ROCK LIME GREEN EYESHADOW

- 1 Apply lime green eyeshadow
- 2 Blend and buff it out according to your desired shape
- 3 Apply a matching eyeshadow on top
- 4 Complete the look with a nude lip colour



**RIGUETTE**  
Shirt  
**REPOSSI**  
Ear cuff, ring

**Eyes:**  
**VICTORIA BECKHAM**  
Beauty Satin Kajal Liner in Sour Apple  
**MAC**  
Eyeshadow in What's the RF?

**Cheeks:**  
**HAUS LABS BY LADY GAGA**  
Color Face Blush Powder  
**LANCÔME**  
Tonil Idôle Ultra Powder Highlighter

**Lips:**  
**MAKE UP FOR EVER**  
Artist Color Pencil in Completely Sepia  
**GUCCI**  
Rouge à Lèvres Matte Lipstick in Sonia Light Beige



### HOW to SHOCK with BLUE LASHES

- 1 Use a lash primer to add extra volume
- 2 Apply layers of blue mascara
- 3 Contrast it with a swipe of lilac pink eyeshadow
- 4 Add shimmering brown eyeshadow on the lower lash line

**MADON LUMÈRE**  
Earrings  
**HUSHAN ZHANG**  
Dress

**Brows:**  
**KOSAS COSMETICS**  
Air Brow Tinted Volumizing Treatment Gel

**Eyes:**  
**HOURGLASS**  
Well Eye Primer  
**DEAR DAHLIA**  
Shimmering Edition Paradise Dual Powder Blusher  
Duo in Petal Princess  
Perfect Designing Shimmer Stick in Maple Brown  
**CHANEL**  
La Base Mascara lash primer  
**YSL BEAUTY**  
Lash Clash Mascara in Electric Blue

**Cheeks:**  
**GUCCI**  
Blush de Beauté in Bright Cord

**Kenny Leung**

Hair & Makeup | Makeup | Mens Grooming  
Beauty

**CAROL HAYES**  
**MANAGEMENT**  
CREATIVE ARTIST & STYLE MANAGEMENT

020 7482 1555  
www.carolhayesmanagement.co.uk

// BEAUTY



Eyes:  
ANASTASIA BEVERLY HILLS  
Horizon Pro Pigment Eyeshadow Palette Vol. 5  
Lips:  
SÉPHORA COLLECTION  
Lip Stain Liner in Always Red  
LAURA MERCIER  
Rouge Essential Silky Creme Lipstick in Rouge Ultime

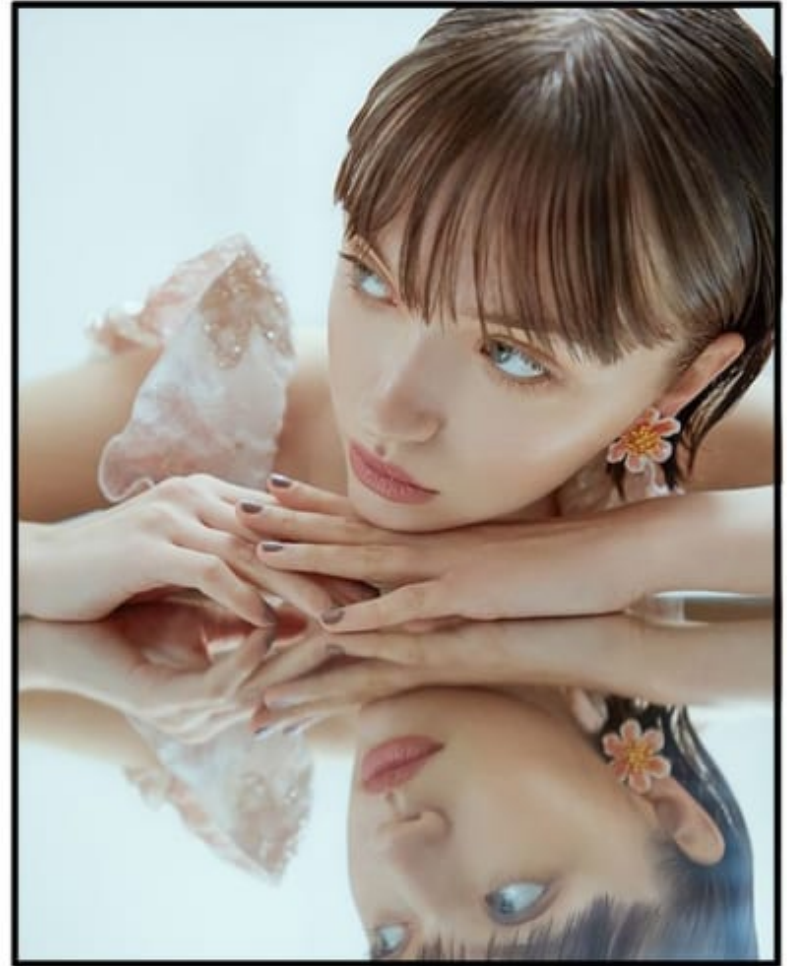
178 *VOGUE* / September 2024

**Kenny Leung**

Hair & Makeup | Makeup | Mens Grooming  
Beauty

**CAROLHAYES  
MANAGEMENT**  
CREATIVE ARTIST & STYLE MANAGEMENT

020 7482 1555  
[www.carolhayesmanagement.co.uk](http://www.carolhayesmanagement.co.uk)

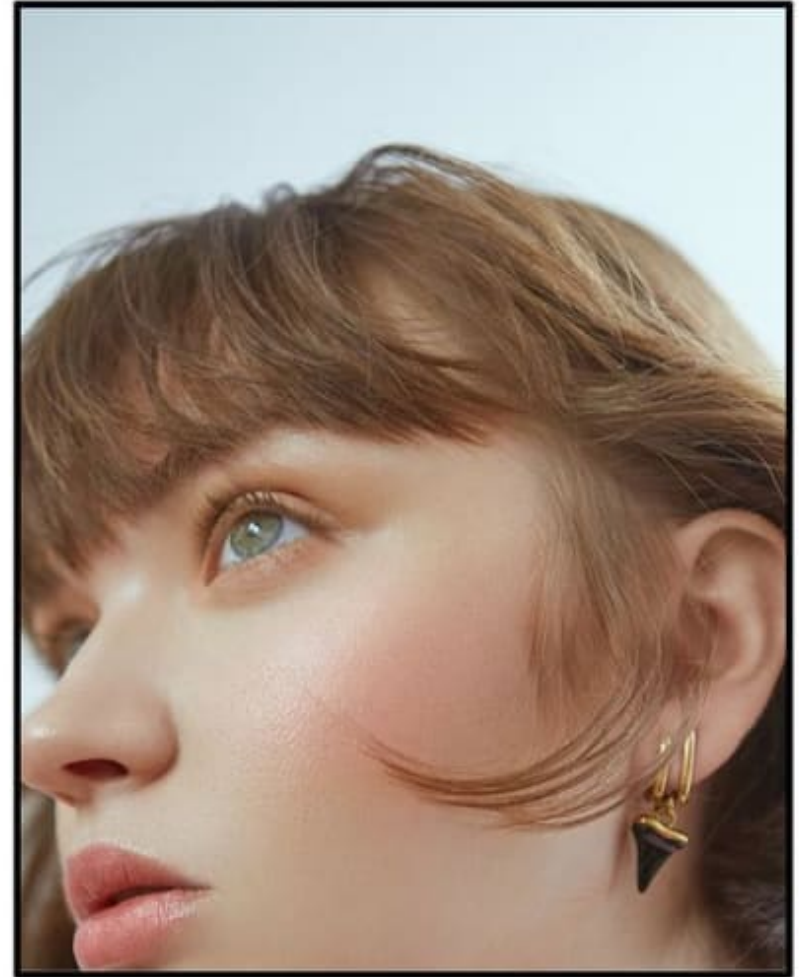


**Kenny Leung**

Hair & Makeup | Makeup | Mens Grooming  
Beauty

**CAROLHAYES  
MANAGEMENT**  
CREATIVE ARTIST & STYLE MANAGEMENT

020 7482 1555  
[www.carolhayesmanagement.co.uk](http://www.carolhayesmanagement.co.uk)



**Kenny Leung**

Hair & Makeup | Makeup | Mens Grooming  
Beauty

**CAROLHAYES  
MANAGEMENT**  
CREATIVE ARTIST & STYLE MANAGEMENT

020 7482 1555  
[www.carolhayesmanagement.co.uk](http://www.carolhayesmanagement.co.uk)

//BEAUTY



Skin  
TATCHA  
The Dewy Skin Cream  
LAURA MERCIER  
Pure Canvas Primer Hydrating  
True Freshness Pressed Powder  
Secret Brightening Powder for Under Eye  
Lips  
RARE BEAUTY  
No. 10 Soft Matte Lip Cream in Kissness

June 2024 / Styling - 173



174 Styling June 2024

**Kenny Leung**  
Hair & Makeup | Makeup | Mens Grooming  
Beauty

**CAROL HAYES  
MANAGEMENT**  
CREATIVE ARTIST & STYLE MANAGEMENT

020 7482 1555  
[www.carolhayesmanagement.co.uk](http://www.carolhayesmanagement.co.uk)



**HOW TO  
ACHIEVE A  
SOFT  
SPRING  
LOOK**

- 1 Apply a creamy soft pink eye shadow on the eyelids as a base
- 2 Set it with a blush-toned powder eyeshadow
- 3 Add a similar eyeliner shade on the waterline
- 4 Finish off with a soft pink blush on the apples of the cheeks



**Eyes:**  
BOBBI BROWN  
Large Flower Cream Shadow Stick in Antique Rose  
NATASHA DENONA  
Mini Starlette eyeshadow palette  
VICTORIA BECKHAM  
Bath Kaja Liner in Cherry Blossom

**Cheeks:**  
DOR BEAUTY  
Rouge Blush in 025 Mizuki

**Lips:**  
LANEIGE  
Lip treatment balm  
YSL BEAUTE  
Rouge Pur Couture in #44 Nuile Loveline  
FENTY BEAUTY  
Fuschia Hydrating Lip Stain in Strawberry Sangria



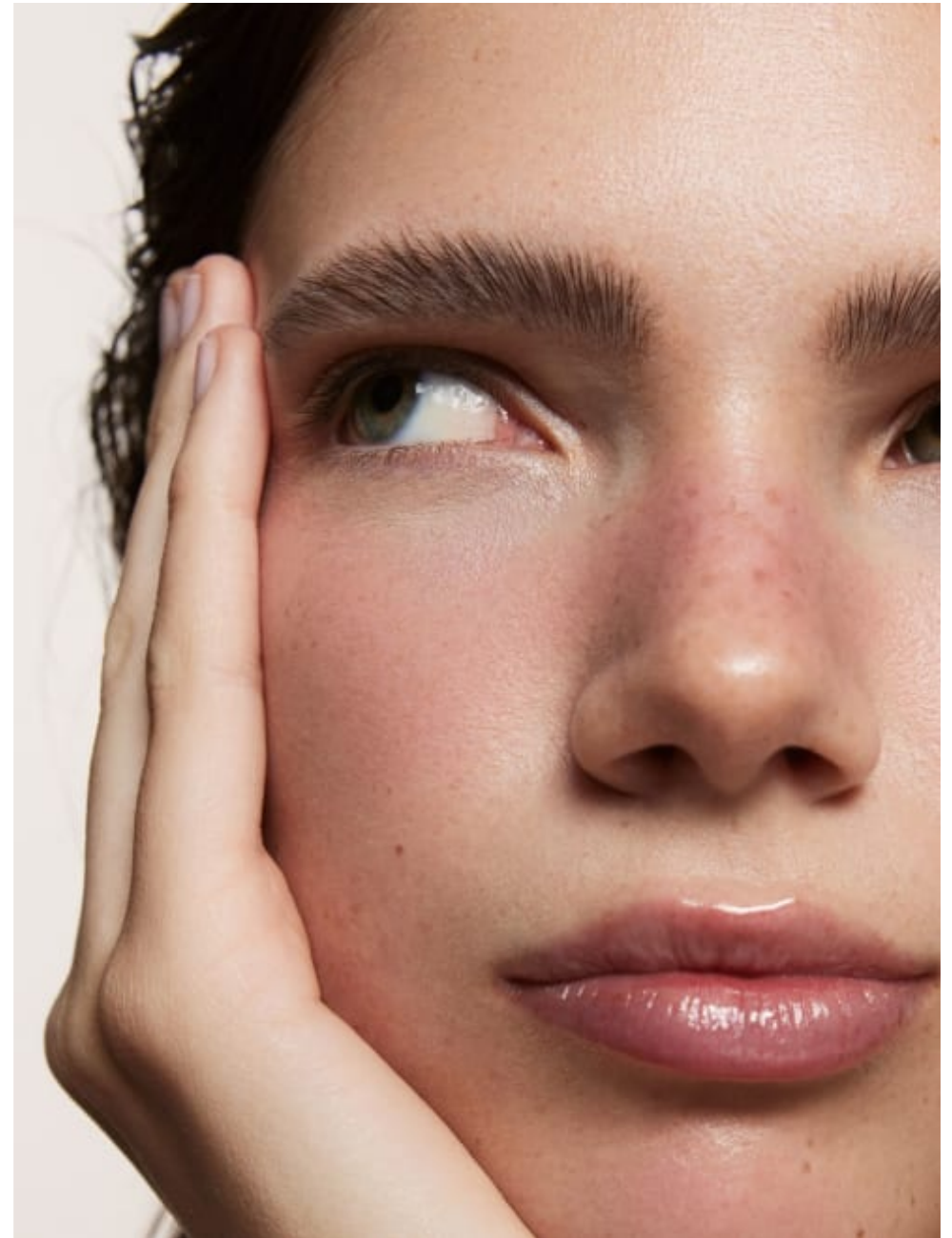
**Cheeks:**  
GIVENCHY  
Rouge Libre Blush in No. 01 Miroirline Libre

**Lips:**  
CHARLOTTE TILBURY  
Lip Cheat Lip Liner in Icon Baby  
MAC  
Maximal matte lipstick in Mult 8 to the Max  
SEPHORA  
Sephora Collection Soft Matte and Easy Lip  
Stain in Unblushed

**HOW TO GET  
GLASS SKIN**

- 1 Form the base by mixing a moisturizing cream with a hydrating primer
- 2 Apply a soft layer of foundation with already sponge to even out the skin tone
- 3 Use a brightening setting powder under the eyes
- 4 Finish off by dabbing a soft shimmery-colored lip tint on the centre of the lips





**Kenny Leung**  
Hair & Makeup | Makeup | Mens Grooming  
Beauty

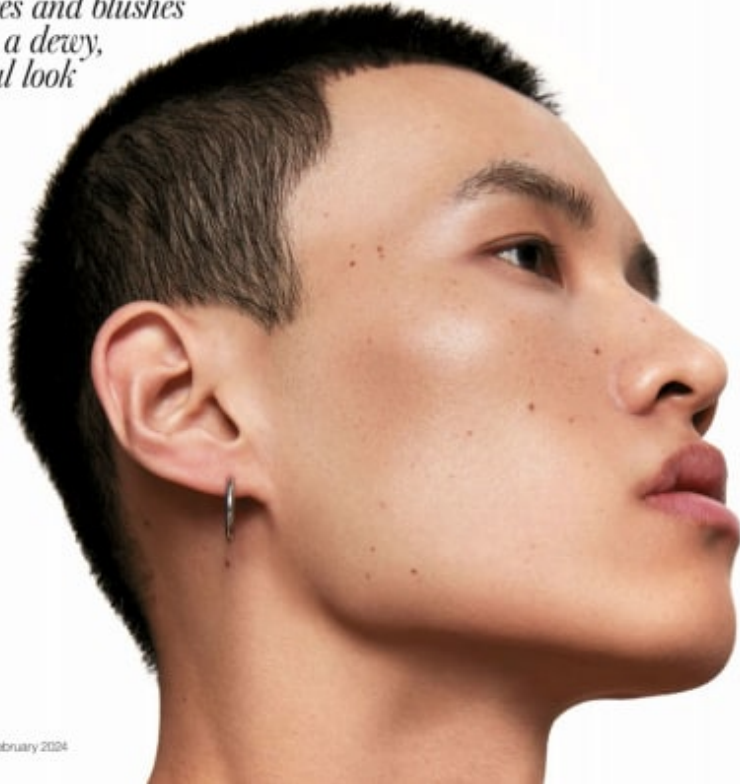
**CAROLHAYES  
MANAGEMENT**  
CREATIVE ARTIST & STYLE MANAGEMENT

020 7482 1555  
[www.carolhayesmanagement.co.uk](http://www.carolhayesmanagement.co.uk)

//BEAUTY

# FACE VALUE

*We all have skin in the game –  
accentuate your angles with careful use  
of glosses and blushes  
to keep a dewy,  
youthful look*



118 *Styl* / January/February 2024



**Kenny Leung**

Hair & Makeup | Makeup | Mens Grooming  
Beauty

**CAROLHAYES  
MANAGEMENT**  
CREATIVE ARTIST & STYLE MANAGEMENT

020 7482 1555

[www.carolhayesmanagement.co.uk](http://www.carolhayesmanagement.co.uk)

// BEAUTY

**Cheeks:**  
**SEPHORA**  
 Collection Air-in-One Cream Color  
 blush in Darling Tangerine

**Lips:**  
**NATASHA DENONA**  
 I Need a Rouge lip crayon in Gig  
**NARS**  
 Powermatte Lip Pigment in  
 Dragon Girl  
**HERMÈS BEAUTY**  
 Rouge Hermès Limited Edition  
 Matte lipstick in Rose Pop  
**MAC**  
 Eyeshadow in Sushi Flower

**CRITTER**  
 Dress

**OSCAR DE LA RENTA**  
 Earrings



*Bright ombre  
lip TIPS*

- 1 Line the lips in vibrant red
- 2 Apply matt red lipstick
- 3 Gently dab pink lipstick on the centre of the lips
- 4 Set off the pink lipstick with soft pink eyeshadow



*Colourful  
eyeliner TIPS*

- 1 Use laserliner eyeshadow on the eyelids
- 2 Apply an orange-based eyeliner for contrast
- 3 Finish with mascara
- 4 Pinch the lashes together for a defined look

**Eyes:**  
**SLIA**  
 Liquid Powder eye tint  
**MAC**  
 Chromagraphic pencil in Genuine Orange  
 Glosscity Liquidliner mascara

**Lips:**  
**HOURLASS**  
 Unsweet Surf Matte lipstick in Poppy 248

**HELDUR YEDMAN**  
 Dress

**THE HRST COLLECTION**  
 Rings

STYLING ALEXANDRA GREENHAM  
 HAIR LACHLAN ALEXANDER WIGNALL  
 NAILS DANNI O'MAHONEY  
 RETOUCHING SASHA POMEIKI  
 MODEL BARBARA MALDONADO @ PREMIER  
 LOCATION POSTSTUDIO, LONDON

**Kenny Leung**

Hair & Makeup | Makeup | Mens Grooming  
 Beauty

**CAROLHAYES  
 MANAGEMENT**  
 CREATIVE ARTIST & STYLE MANAGEMENT

020 7482 1555  
 www.carolhayesmanagement.co.uk



170 *Styl* / May 2024



**Kenny Leung**

Hair & Makeup | Makeup | Mens Grooming  
Beauty

**CAROLHAYES  
MANAGEMENT**  
CREATIVE ARTIST & STYLE MANAGEMENT

020 7482 1555  
www.carolhayesmanagement.co.uk



LUCY'S 5

Photographer Dani Baker  
www.danibakerphotography.com @Danibaker  
Stylist Lena Young @Lenayoungstylist  
Hair and Makeup Kenny Leung @CaroleHayesManagement  
Using Makeup Revolution And Moroccan  
www.kenny-leung.com @Kenny\_makeup  
Model Saryuna Tsydyrova @Lindenstaub @Saryuna\_its  
Earrings Shyla Bardot Huggie Emerald Green  
Dress Asce Design Gloves Car2ie  
opposite page Earrings Kara Yoo Liege Ear Threaders at  
UnderHerEyes.com Cape Car2ie Gloves Aleksandra Seweryniak

# Fruity Beauty



LUCY'S 9

## Kenny Leung

Hair & Makeup | Makeup | Mens Grooming  
Beauty

**CAROLHAYES  
MANAGEMENT**  
CREATIVE ARTIST & STYLE MANAGEMENT

020 7482 1555  
www.carolhayesmanagement.co.uk

Earrings Kara Yoo Gravity Hoops Silver at  
Shit La Boutique UnderherEyes.com  
Trousers Asce Collusion Hat Asce Collusion  
opposite page Hat Fiorentina Latner



**Kenny Leung**

Hair & Makeup | Makeup | Mens Grooming  
Beauty

**CAROLHAYES  
MANAGEMENT**  
CREATIVE ARTIST & STYLE MANAGEMENT

020 7482 1555  
[www.carolhayesmanagement.co.uk](http://www.carolhayesmanagement.co.uk)



**Kenny Leung**

Hair & Makeup | Makeup | Mens Grooming  
Beauty

**CAROLHAYES  
MANAGEMENT**  
CREATIVE ARTIST & STYLE MANAGEMENT

020 7482 1555

[www.carolhayesmanagement.co.uk](http://www.carolhayesmanagement.co.uk)



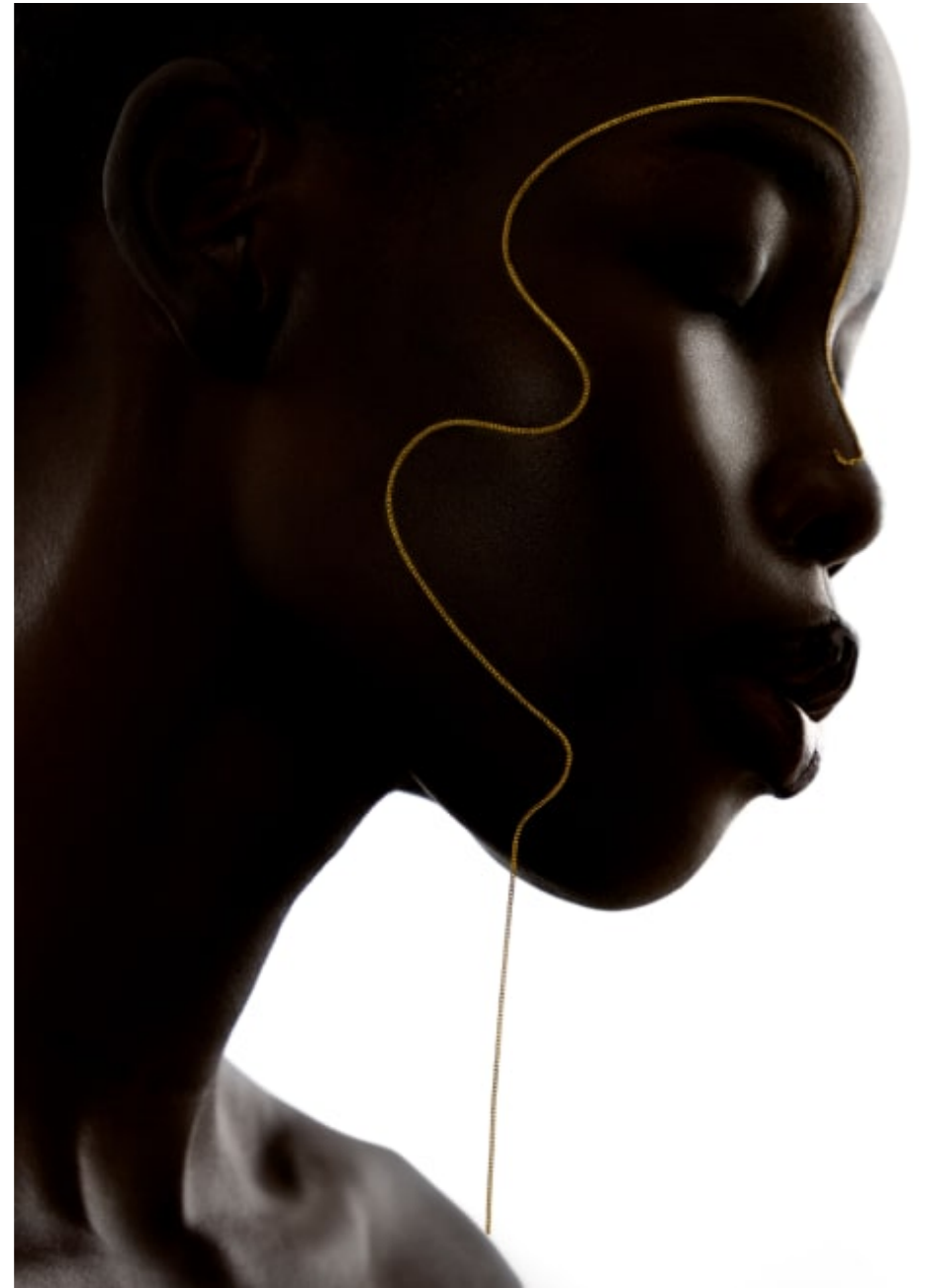
**Kenny Leung**

Hair & Makeup | Makeup | Mens Grooming  
Beauty

**CAROLHAYES  
MANAGEMENT**  
CREATIVE ARTIST & STYLE MANAGEMENT

020 7482 1555

[www.carolhayesmanagement.co.uk](http://www.carolhayesmanagement.co.uk)



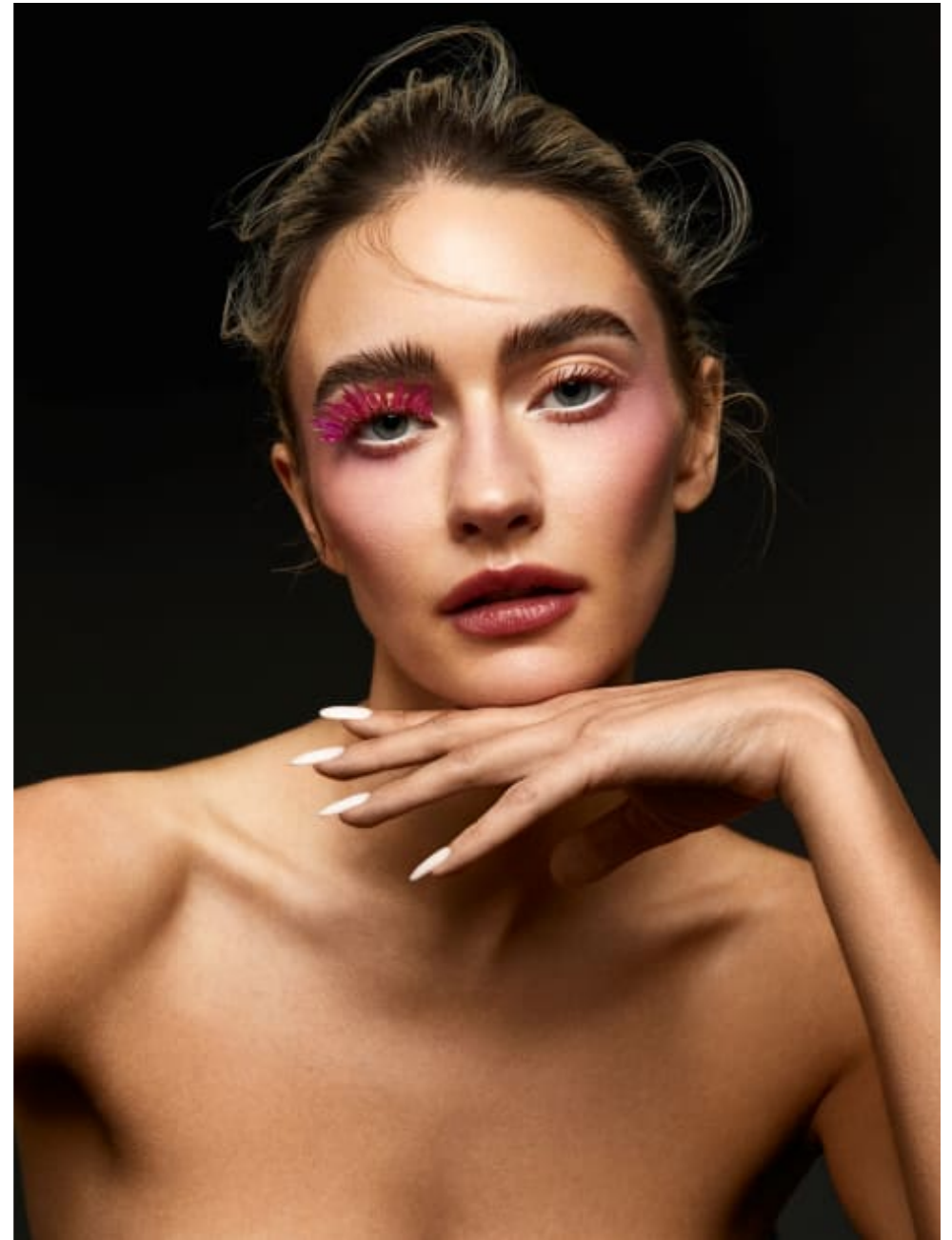
**Kenny Leung**

Hair & Makeup | Makeup | Mens Grooming  
Beauty

**CAROLHAYES  
MANAGEMENT**  
CREATIVE ARTIST & STYLE MANAGEMENT

020 7482 1555

[www.carolhayesmanagement.co.uk](http://www.carolhayesmanagement.co.uk)



**Kenny Leung**

Hair & Makeup | Makeup | Mens Grooming  
Beauty

**CAROLHAYES  
MANAGEMENT**  
CREATIVE ARTIST & STYLE MANAGEMENT

020 7482 1555

[www.carolhayesmanagement.co.uk](http://www.carolhayesmanagement.co.uk)



**Kenny Leung**

Hair & Makeup | Makeup | Mens Grooming  
Beauty

**CAROLHAYES  
MANAGEMENT**  
CREATIVE ARTIST & STYLE MANAGEMENT

020 7482 1555  
[www.carolhayesmanagement.co.uk](http://www.carolhayesmanagement.co.uk)



**Kenny Leung**  
Hair & Makeup | Makeup | Mens Grooming  
Beauty

**CAROLHAYES  
MANAGEMENT**  
CREATIVE ARTIST & STYLE MANAGEMENT

020 7482 1555  
[www.carolhayesmanagement.co.uk](http://www.carolhayesmanagement.co.uk)

**Face:**

Embryolisse Lait-Crème Concentré  
Multi-Purpose Moisturiser  
Giorgio Armani Luminous Silk Foundation  
Tarte Shape Tape Ultra Creamy Concealer

**Cheeks:**

Clinique Powder Pop Flower Bronzer  
Rare Beauty Soft Pinch Liquid Blush in Happy

**Brows:**

Anastasia Beverly Hills Brow Pen

**Eyes:**

Morphe 2 Gloss Pop Face & Eye  
Hourglass Unlocked Instant  
Extensions Mascara

**Lips:**

Charlotte Tilbury Lip Cheat in Pillow Talk  
Charlotte Tilbury Superstar Lips in Pillow Talk

**Face:**

Glow Recipe Plum Plump Hyaluronic Cream  
Mac Cosmetics Studio Fix Every Wear All Over  
Face Pen  
Tarte Shape Tape Ultra Creamy Concealer

**Cheeks:**

Hourglass Ambient Lighting Bronzer  
Rare Beauty Stay Vulnerable Melting Blush in  
Nearly Natural

**Brows:**

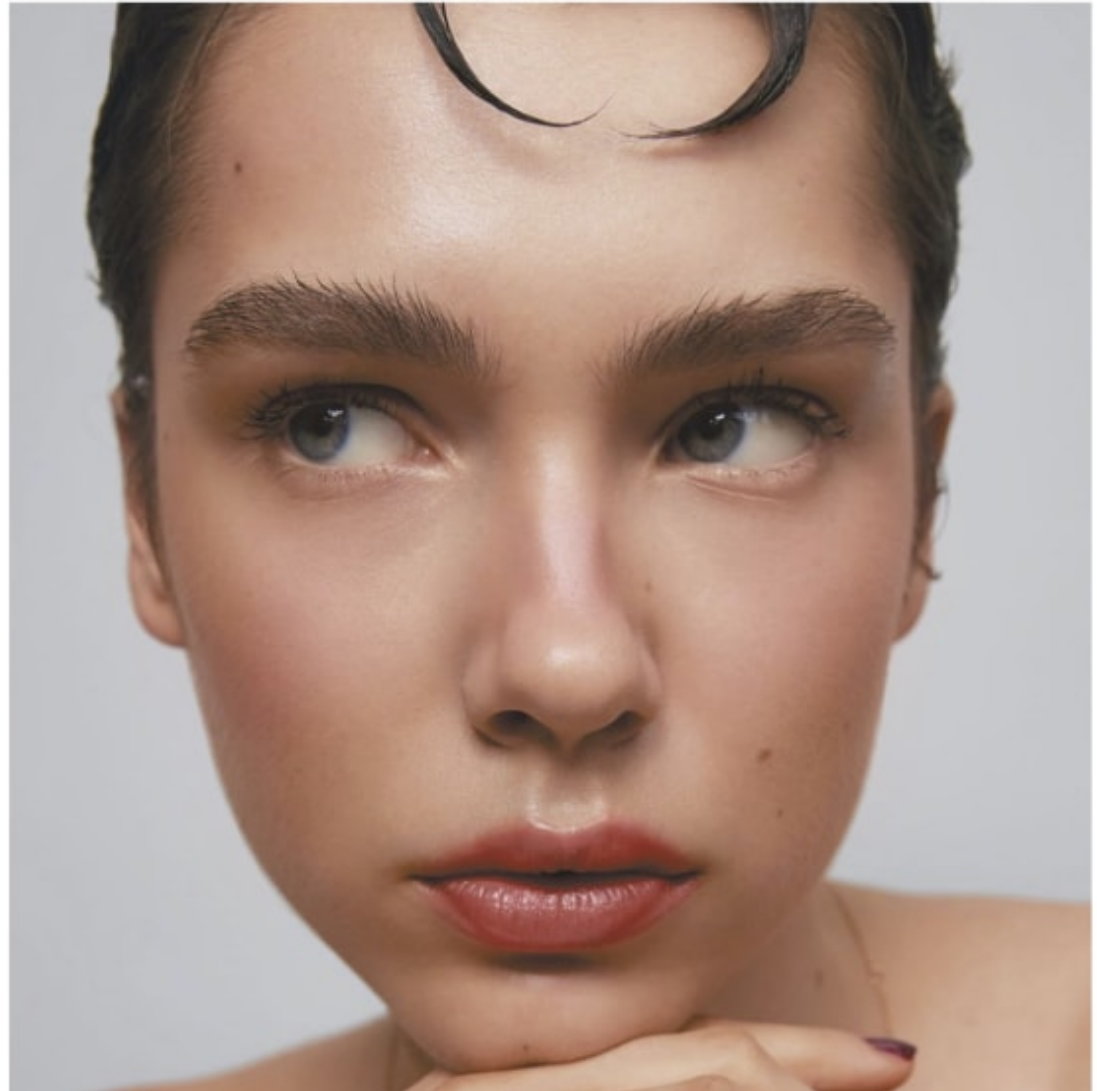
Benefit Cosmetics Fluff Up Brow Wax

**Eyes:**

Morphe 2 Gloss Pop Face & Eye  
Hourglass Caution Extreme Lash Mascara

**Lips:**

Charlotte Tilbury Lip Cheat in Pillow Talk  
Nudestix Magnetic Lip Plush Paint in Fresh Fiji



**Kenny Leung**

Hair & Makeup | Makeup | Mens Grooming  
Beauty

**CAROLHAYES  
MANAGEMENT**  
CREATIVE ARTIST & STYLE MANAGEMENT

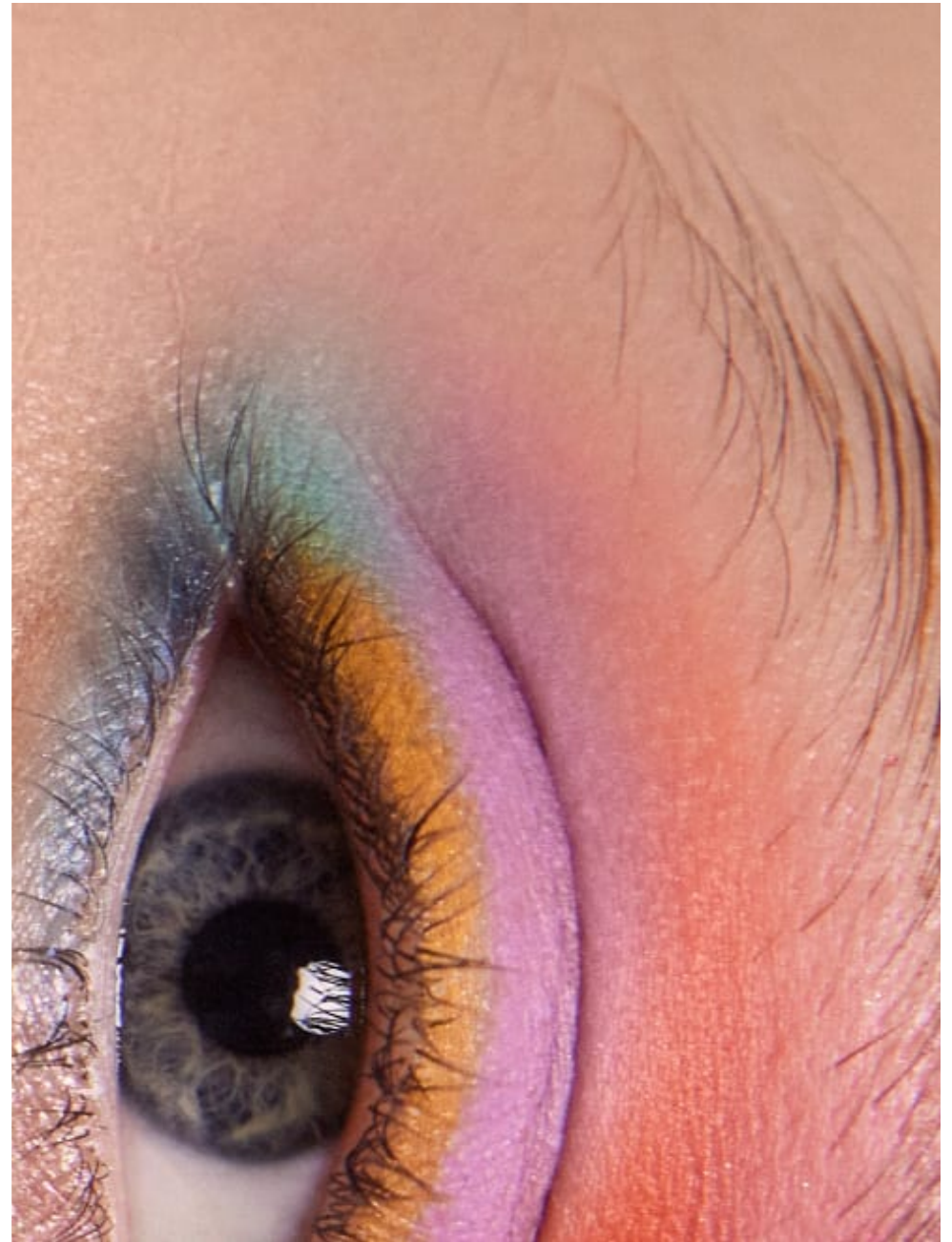
020 7482 1555  
[www.carolhayesmanagement.co.uk](http://www.carolhayesmanagement.co.uk)



**Kenny Leung**  
Hair & Makeup | Makeup | Mens Grooming  
Beauty

**CAROLHAYES  
MANAGEMENT**  
CREATIVE ARTIST & STYLE MANAGEMENT

020 7482 1555  
[www.carolhayesmanagement.co.uk](http://www.carolhayesmanagement.co.uk)



**Kenny Leung**

Hair & Makeup | Makeup | Mens Grooming  
Beauty

**CAROLHAYES  
MANAGEMENT**  
CREATIVE ARTIST & STYLE MANAGEMENT

020 7482 1555

[www.carolhayesmanagement.co.uk](http://www.carolhayesmanagement.co.uk)

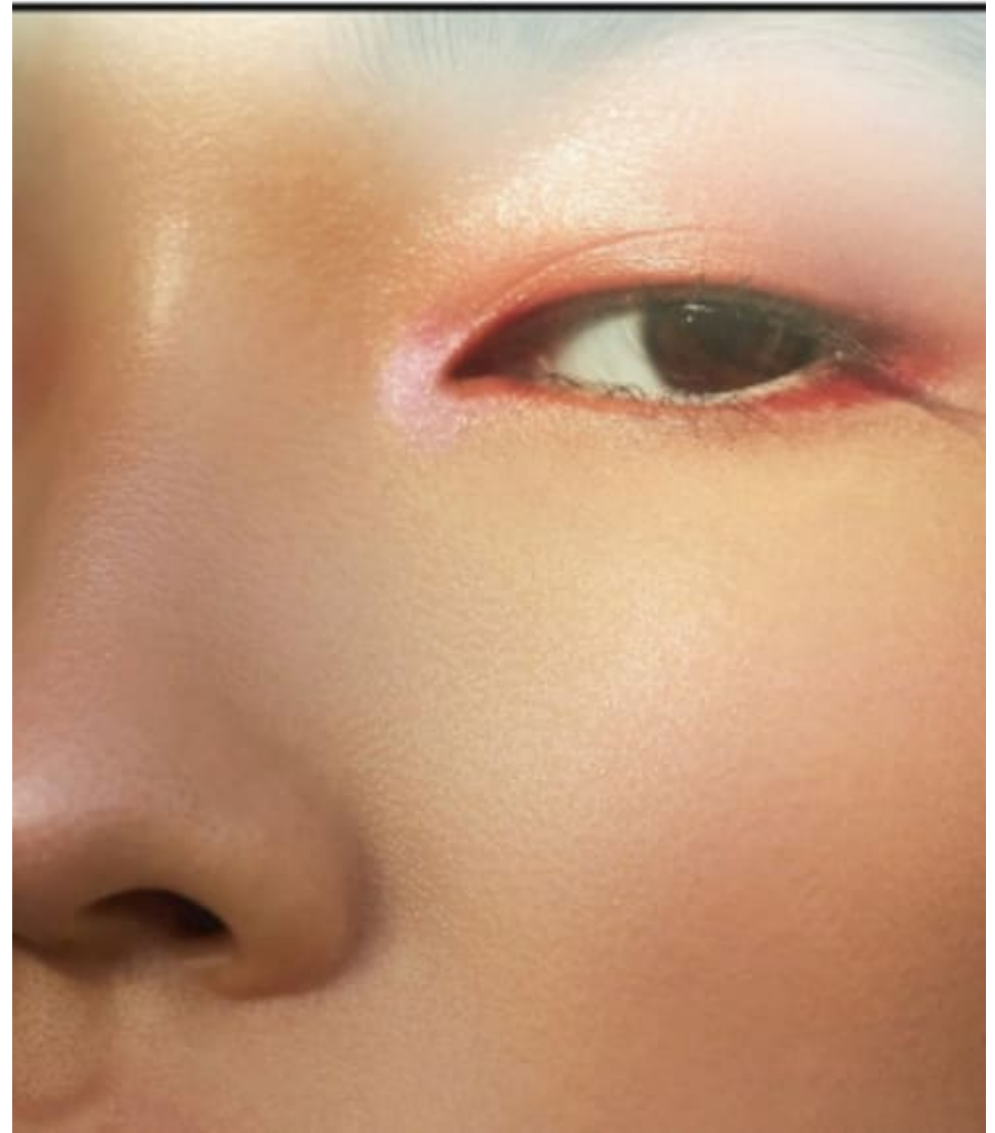
# Cable

magazine



# Cable

magazine



**Kenny Leung**

Hair & Makeup | Makeup | Mens Grooming  
Beauty

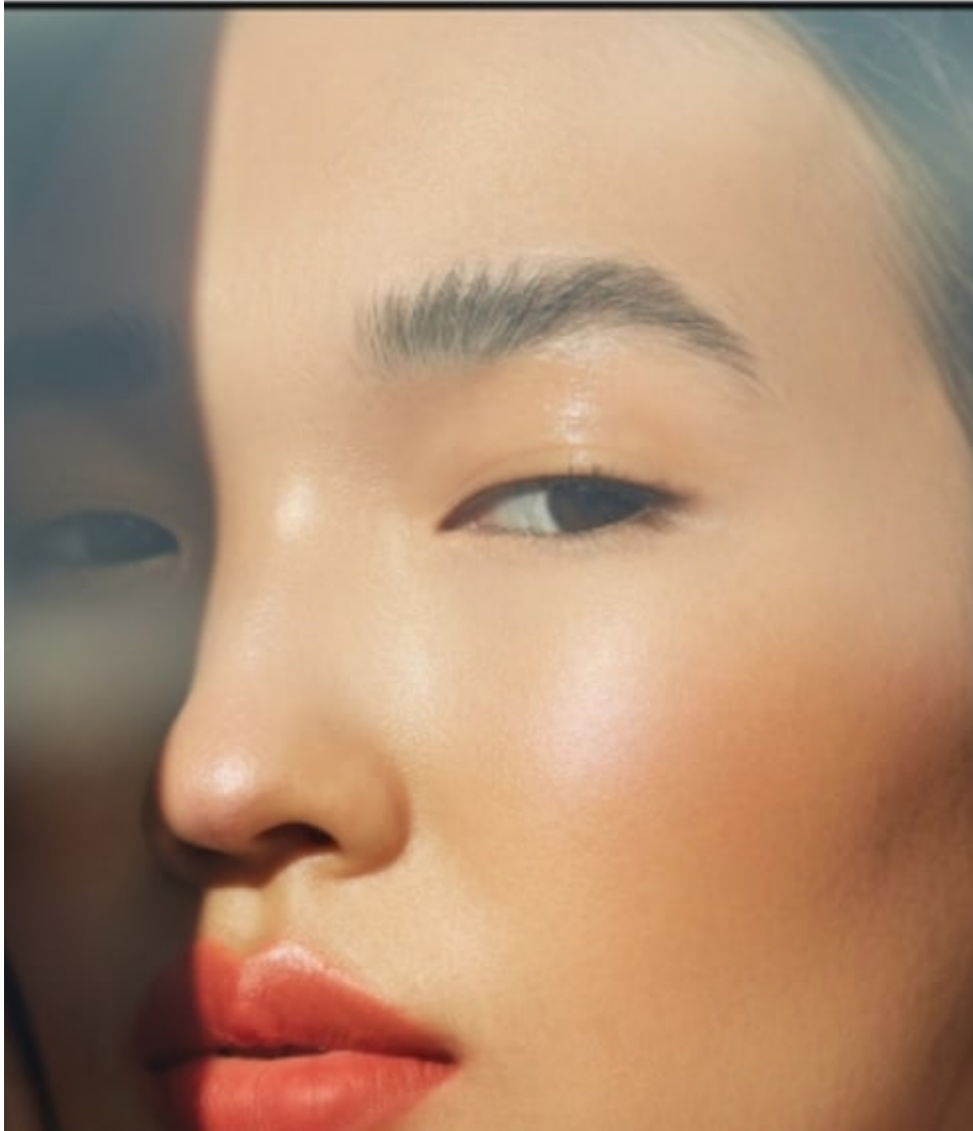
**CAROLHAYES**  
**MANAGEMENT**  
CREATIVE ARTIST & STYLE MANAGEMENT

020 7482 1555

[www.carolhayesmanagement.co.uk](http://www.carolhayesmanagement.co.uk)

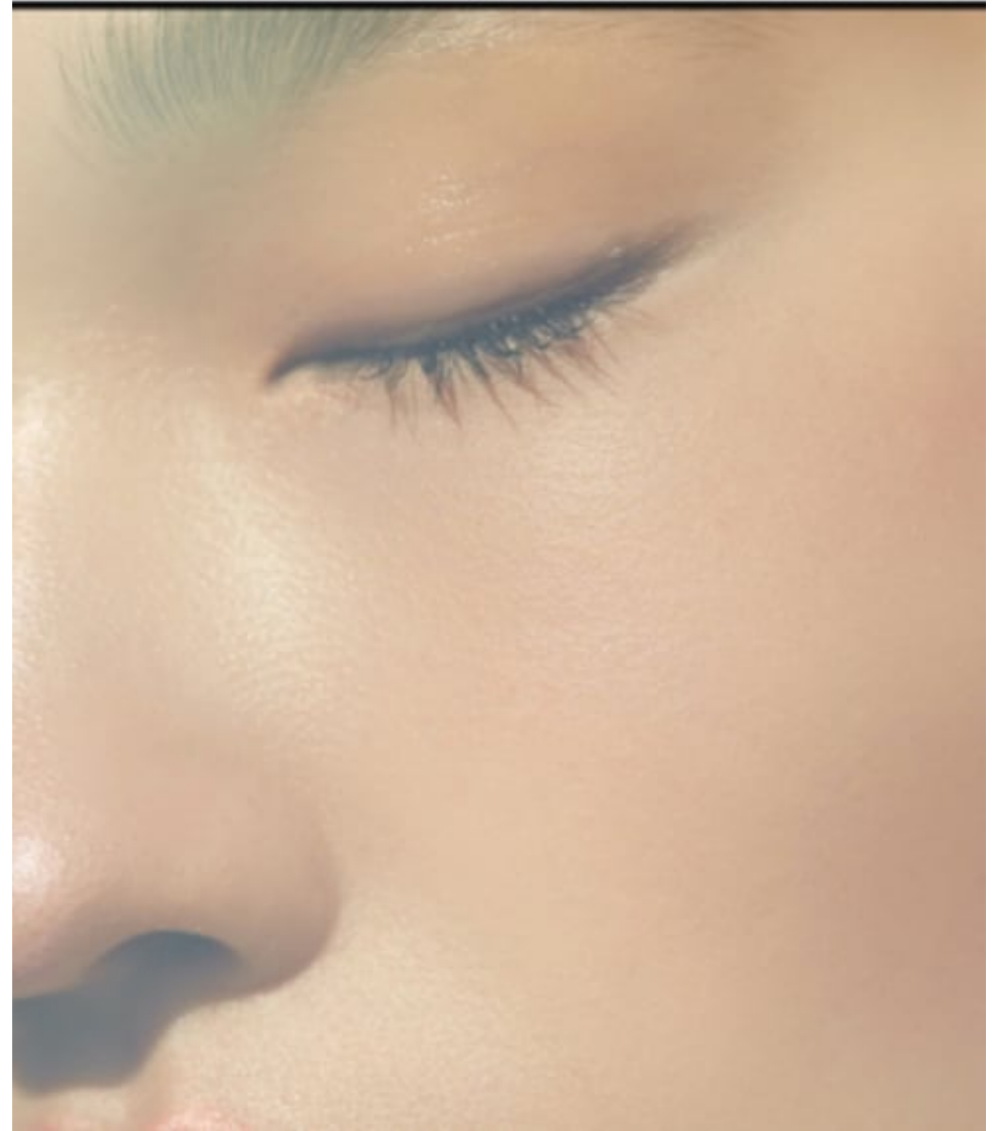
# Cable

magazine



# Cable

magazine



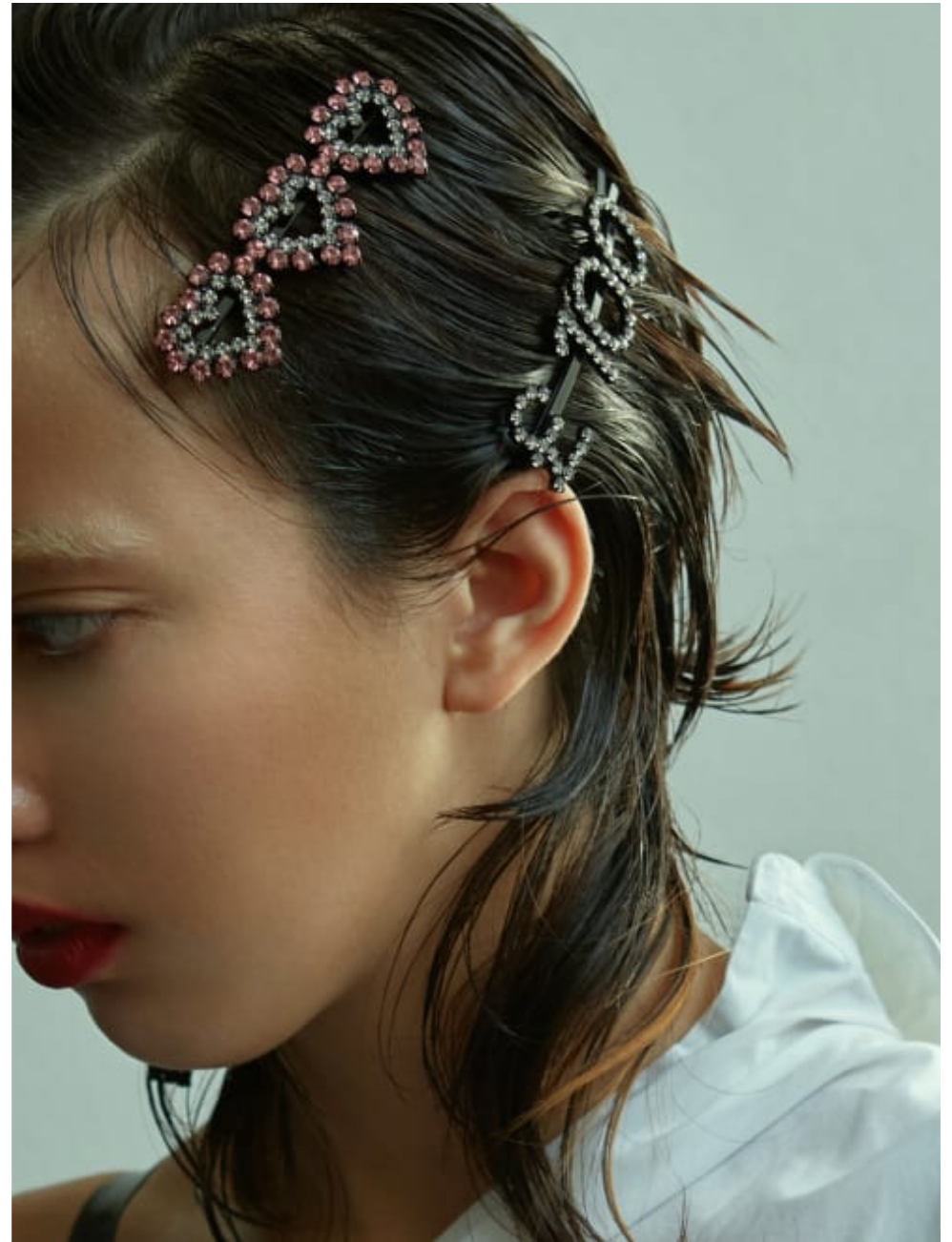
**Kenny Leung**

Hair & Makeup | Makeup | Mens Grooming  
Beauty

**CAROLHAYES**  
**MANAGEMENT**  
CREATIVE ARTIST & STYLE MANAGEMENT

020 7482 1555

[www.carolhayesmanagement.co.uk](http://www.carolhayesmanagement.co.uk)



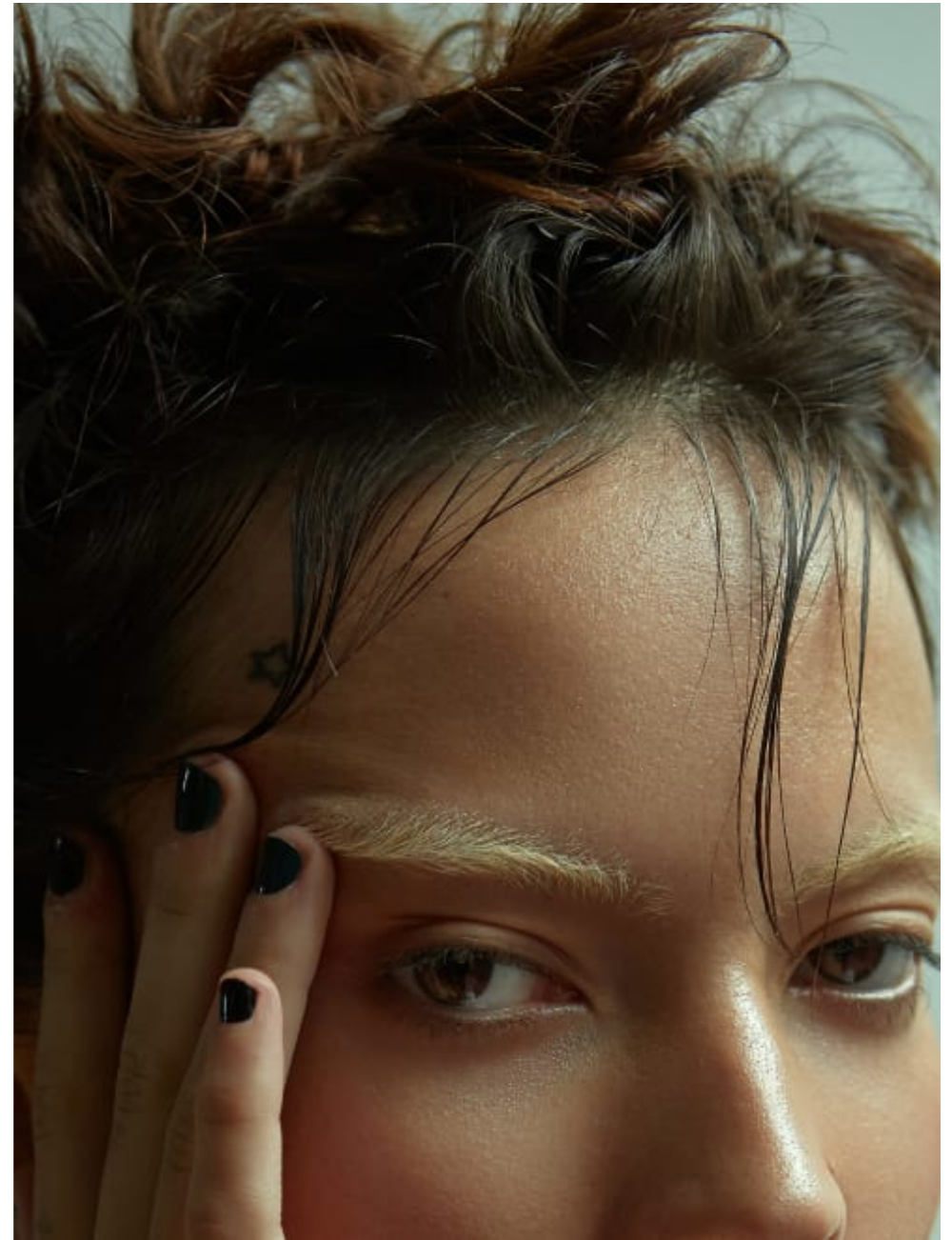
**Kenny Leung**

Hair & Makeup | Makeup | Mens Grooming  
Beauty

**CAROLHAYES  
MANAGEMENT**  
CREATIVE ARTIST & STYLE MANAGEMENT

020 7482 1555

[www.carolhayesmanagement.co.uk](http://www.carolhayesmanagement.co.uk)



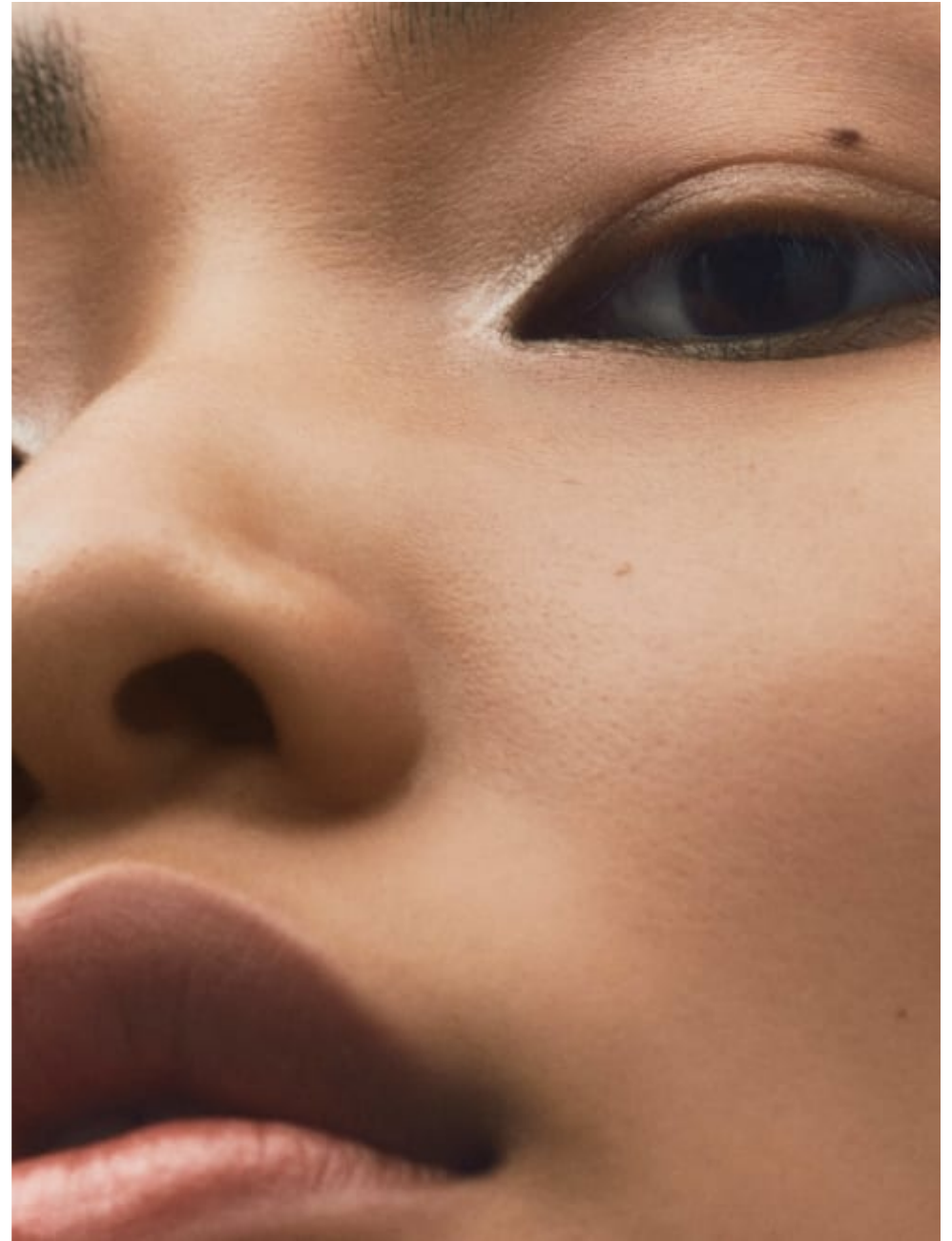
**Kenny Leung**

Hair & Makeup | Makeup | Mens Grooming  
Beauty

**CAROLHAYES  
MANAGEMENT**  
CREATIVE ARTIST & STYLE MANAGEMENT

020 7482 1555

[www.carolhayesmanagement.co.uk](http://www.carolhayesmanagement.co.uk)



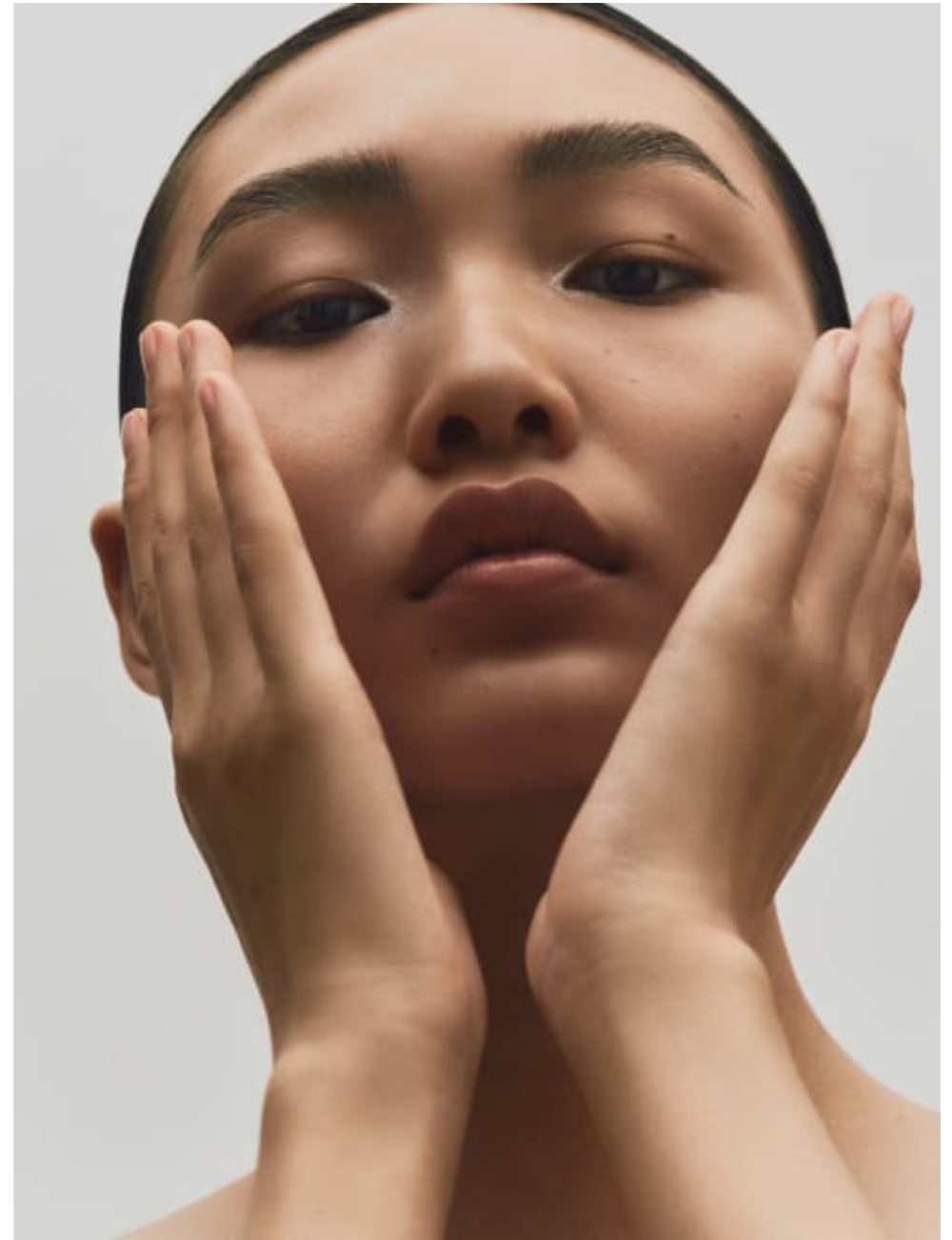
**Kenny Leung**

Hair & Makeup | Makeup | Mens Grooming  
Beauty

**CAROLHAYES  
MANAGEMENT**  
CREATIVE ARTIST & STYLE MANAGEMENT

020 7482 1555

[www.carolhayesmanagement.co.uk](http://www.carolhayesmanagement.co.uk)



**Kenny Leung**

Hair & Makeup | Makeup | Mens Grooming  
Beauty

**CAROLHAYES  
MANAGEMENT**  
CREATIVE ARTIST & STYLE MANAGEMENT

020 7482 1555

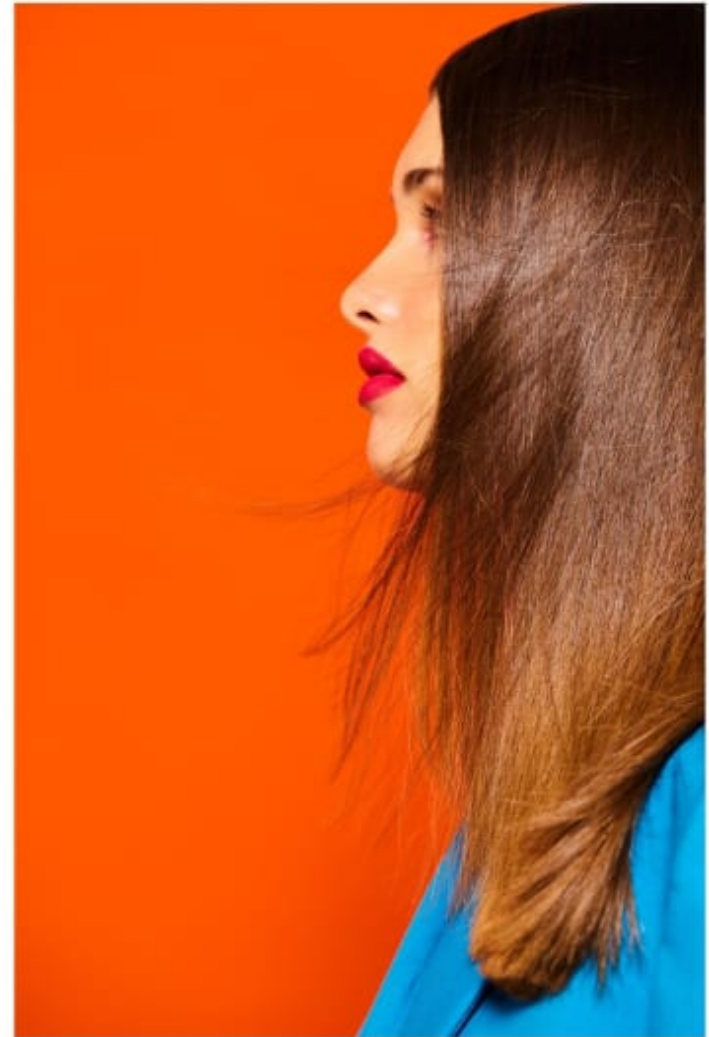
[www.carolhayesmanagement.co.uk](http://www.carolhayesmanagement.co.uk)



**Kenny Leung**

Hair & Makeup | Makeup | Mens Grooming  
Beauty

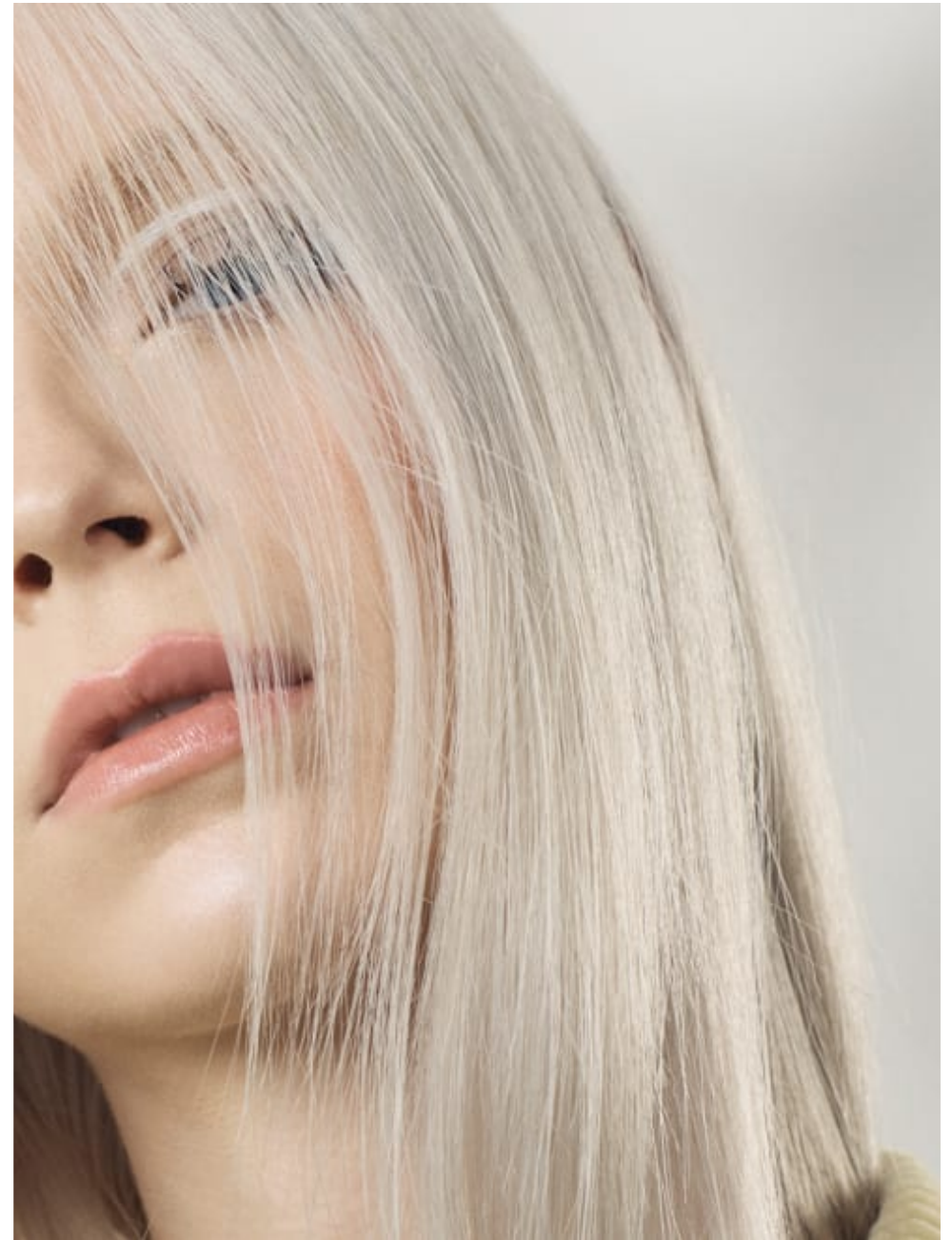
**CAROLHAYES  
MANAGEMENT**  
CREATIVE ARTIST & STYLE MANAGEMENT



Moer Zira

57

020 7482 1555  
[www.carolhayesmanagement.co.uk](http://www.carolhayesmanagement.co.uk)



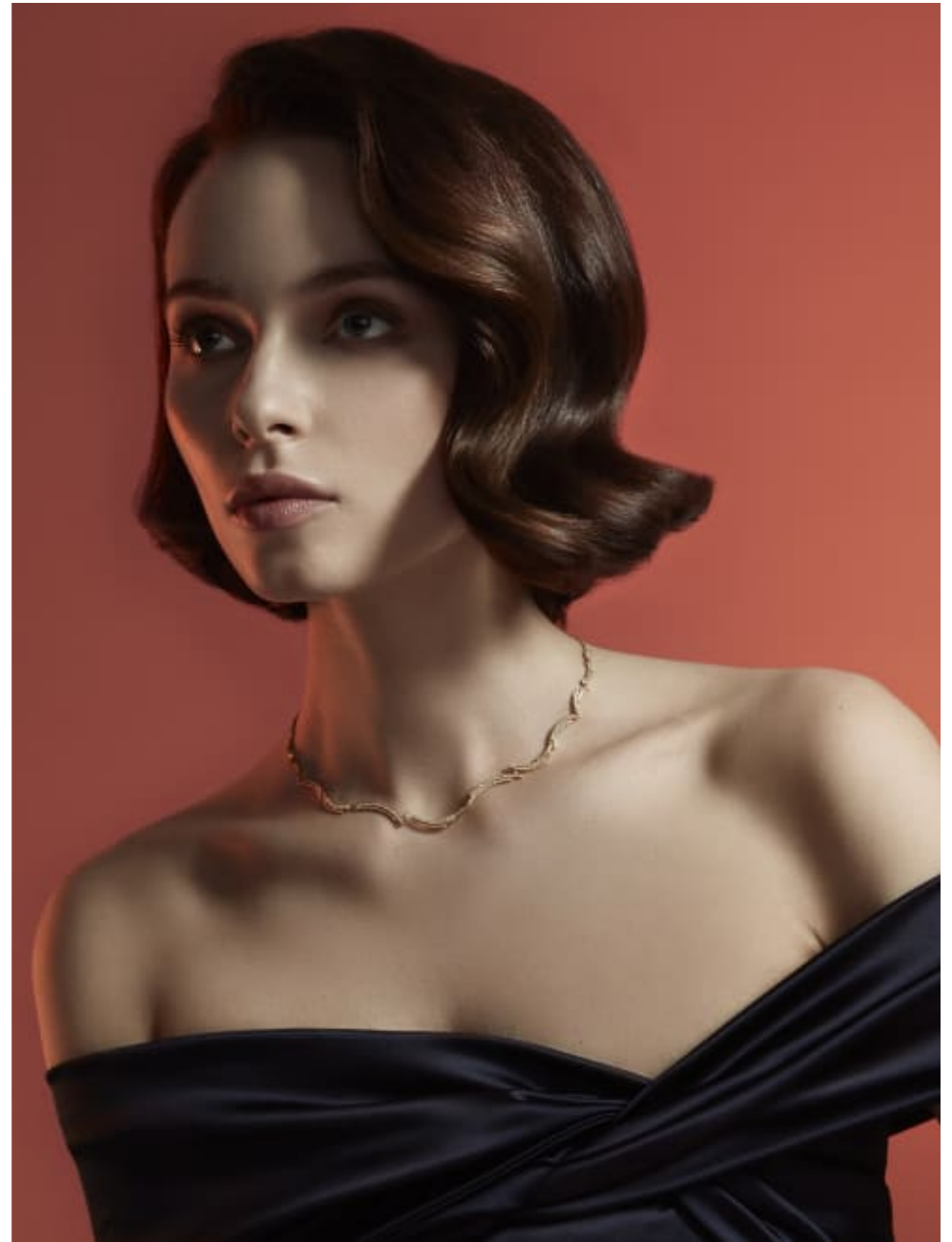
**Kenny Leung**

Hair & Makeup | Makeup | Mens Grooming  
Beauty

**CAROLHAYES  
MANAGEMENT**  
CREATIVE ARTIST & STYLE MANAGEMENT

020 7482 1555

[www.carolhayesmanagement.co.uk](http://www.carolhayesmanagement.co.uk)



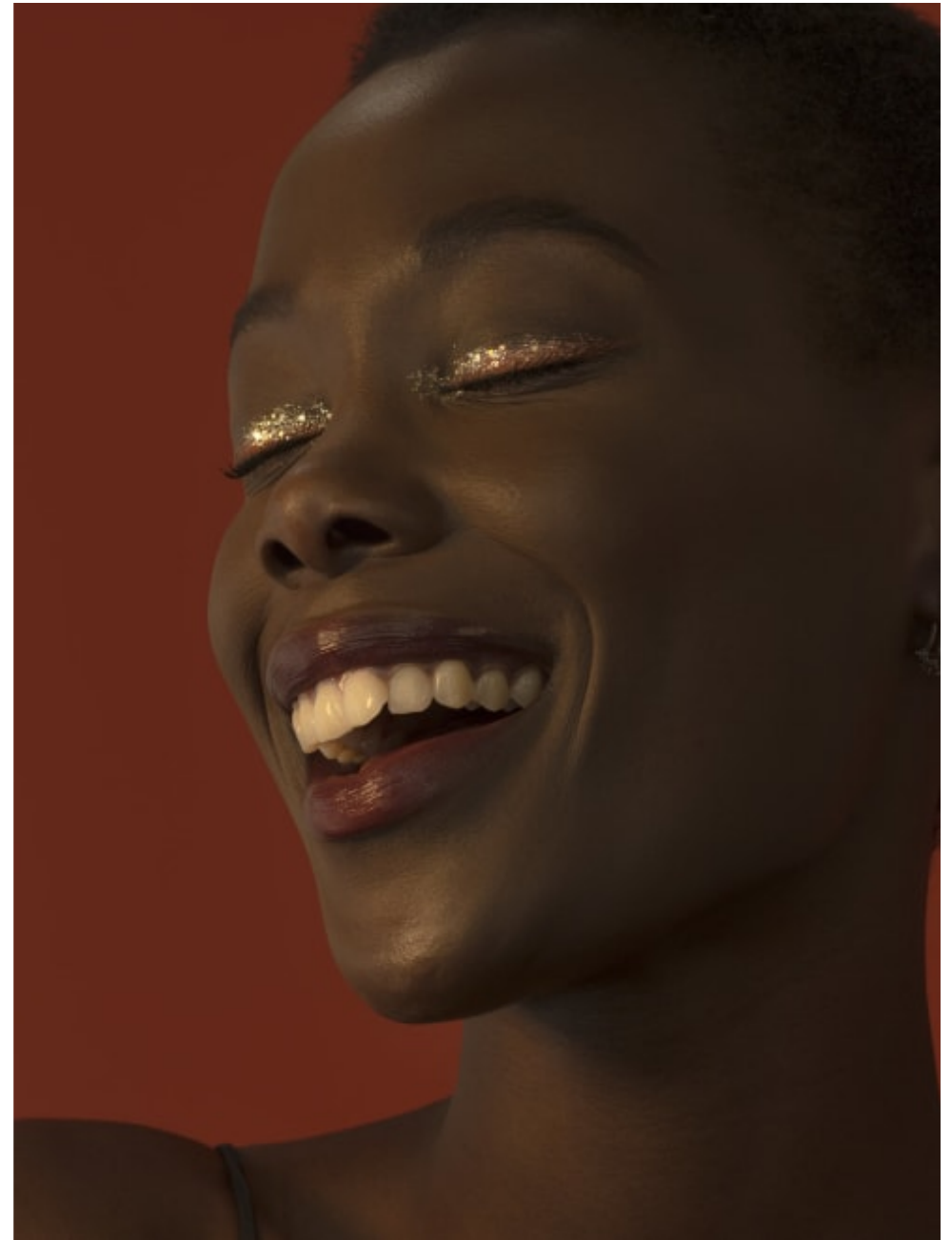
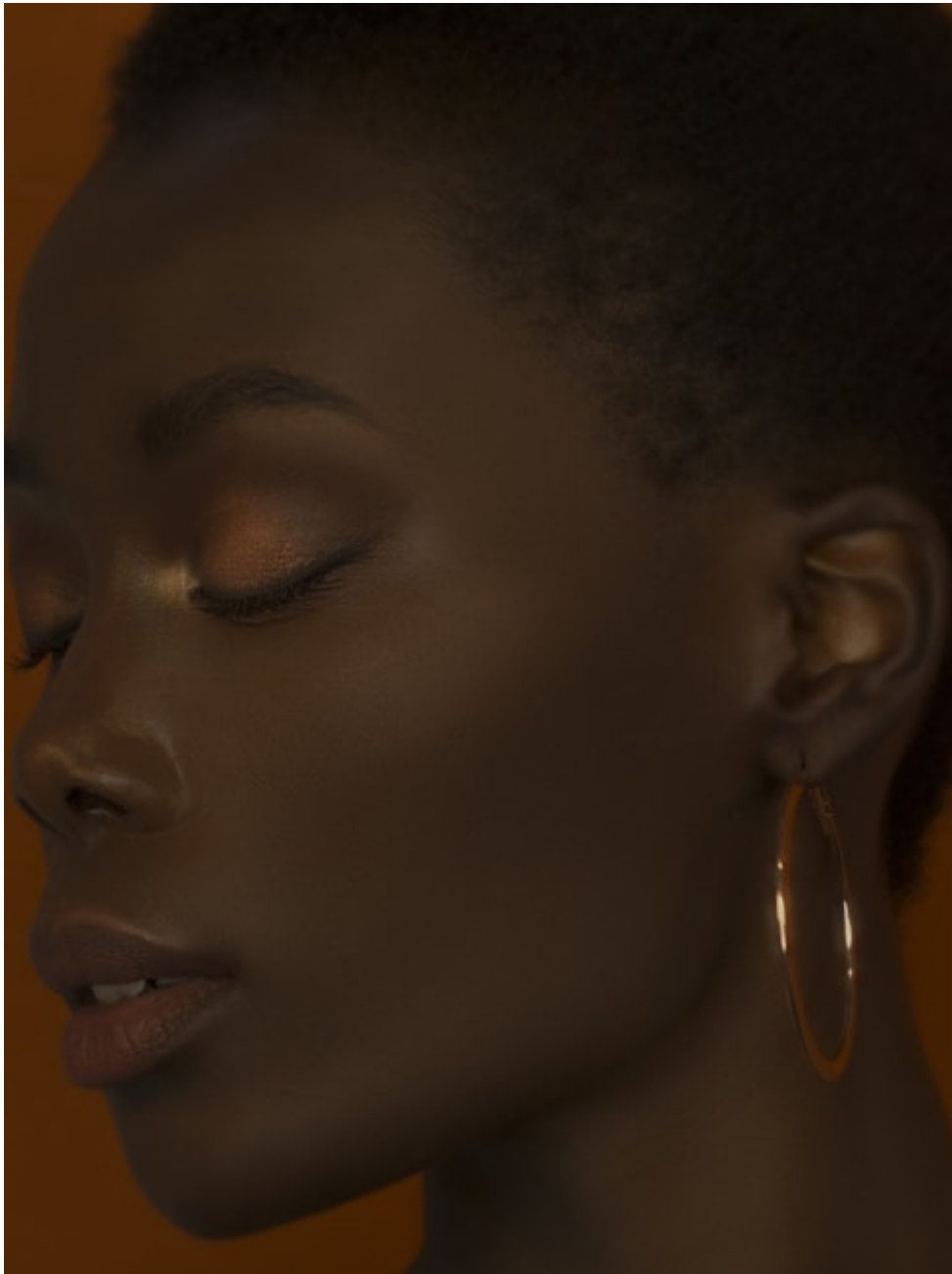
**Kenny Leung**

Hair & Makeup | Makeup | Mens Grooming  
Beauty

**CAROLHAYES  
MANAGEMENT**  
CREATIVE ARTIST & STYLE MANAGEMENT

020 7482 1555

[www.carolhayesmanagement.co.uk](http://www.carolhayesmanagement.co.uk)



**Kenny Leung**

Hair & Makeup | Makeup | Mens Grooming  
Beauty

**CAROLHAYES  
MANAGEMENT**  
CREATIVE ARTIST & STYLE MANAGEMENT

020 7482 1555

[www.carolhayesmanagement.co.uk](http://www.carolhayesmanagement.co.uk)



70 la botanica



Makeup Artist and Hair Stylist: Kenny Leung @kenny\_makeup  
Models: Tamina @taminaswan, Dukie Arkinson @dukie.arkinson, Wan Yu Huang @wan\_yu\_huang, Lucy Evans @lucyevans, Sophia Solano @soph.solano / MELK Management @milanofmanagement  
Nina @nina\_k, Joli @joli\_milkshake / Titanium Management @titaniummanagement

la botanica 71

**Kenny Leung**

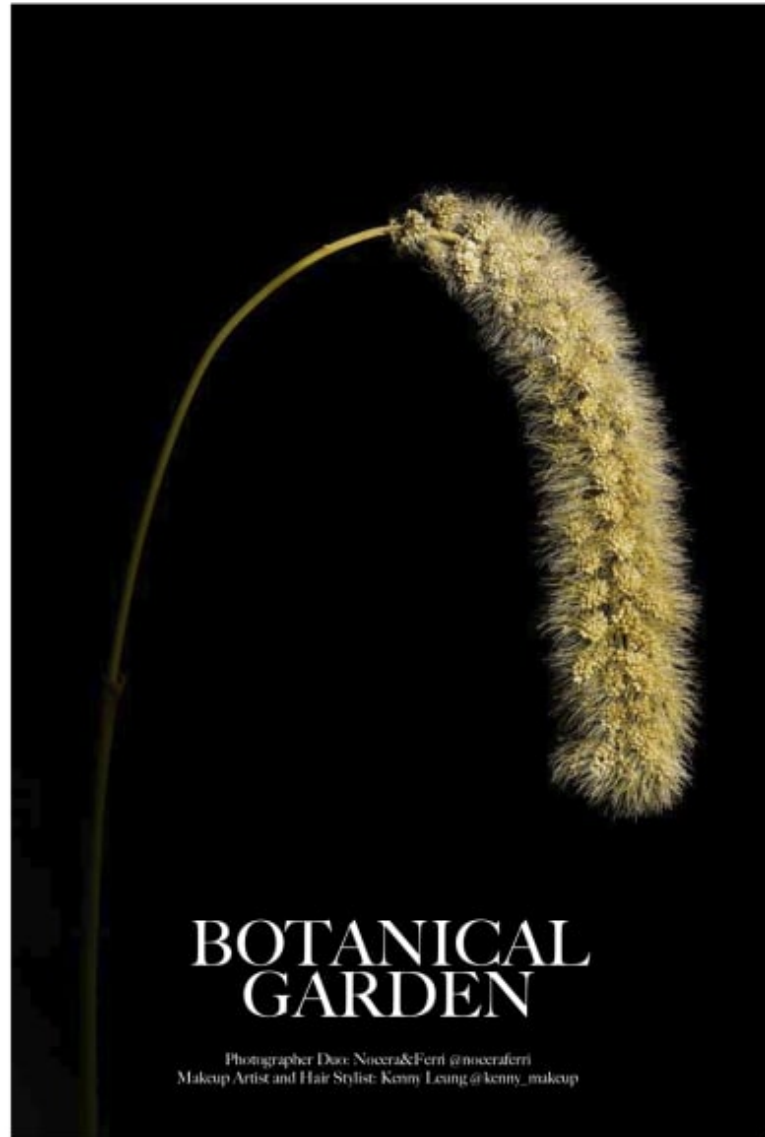
Hair & Makeup | Makeup | Mens Grooming  
Beauty

**CAROLHAYES  
MANAGEMENT**  
CREATIVE ARTIST & STYLE MANAGEMENT

020 7482 1555  
www.carolhayesmanagement.co.uk



64 la botanica



la botanica 65

**Kenny Leung**

Hair & Makeup | Makeup | Mens Grooming  
Beauty

**CAROLHAYES  
MANAGEMENT**  
CREATIVE ARTIST & STYLE MANAGEMENT

020 7482 1555  
[www.carolhayesmanagement.co.uk](http://www.carolhayesmanagement.co.uk)



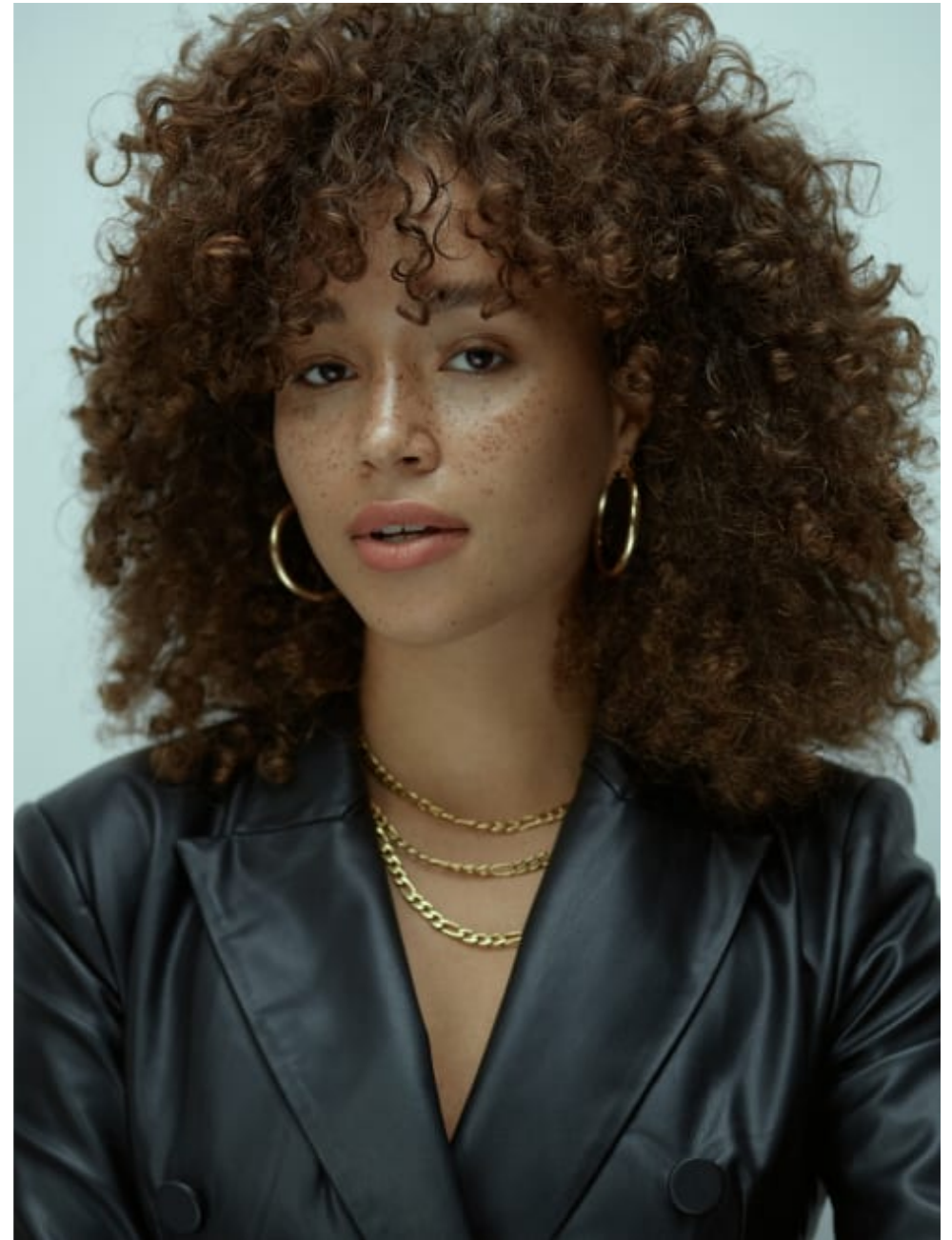
**Kenny Leung**

Hair & Makeup | Makeup | Mens Grooming  
Beauty

**CAROLHAYES  
MANAGEMENT**  
CREATIVE ARTIST & STYLE MANAGEMENT

020 7482 1555

[www.carolhayesmanagement.co.uk](http://www.carolhayesmanagement.co.uk)



**Kenny Leung**

Hair & Makeup | Makeup | Mens Grooming  
Beauty

**CAROLHAYES  
MANAGEMENT**  
CREATIVE ARTIST & STYLE MANAGEMENT

020 7482 1555

[www.carolhayesmanagement.co.uk](http://www.carolhayesmanagement.co.uk)



**Kenny Leung**

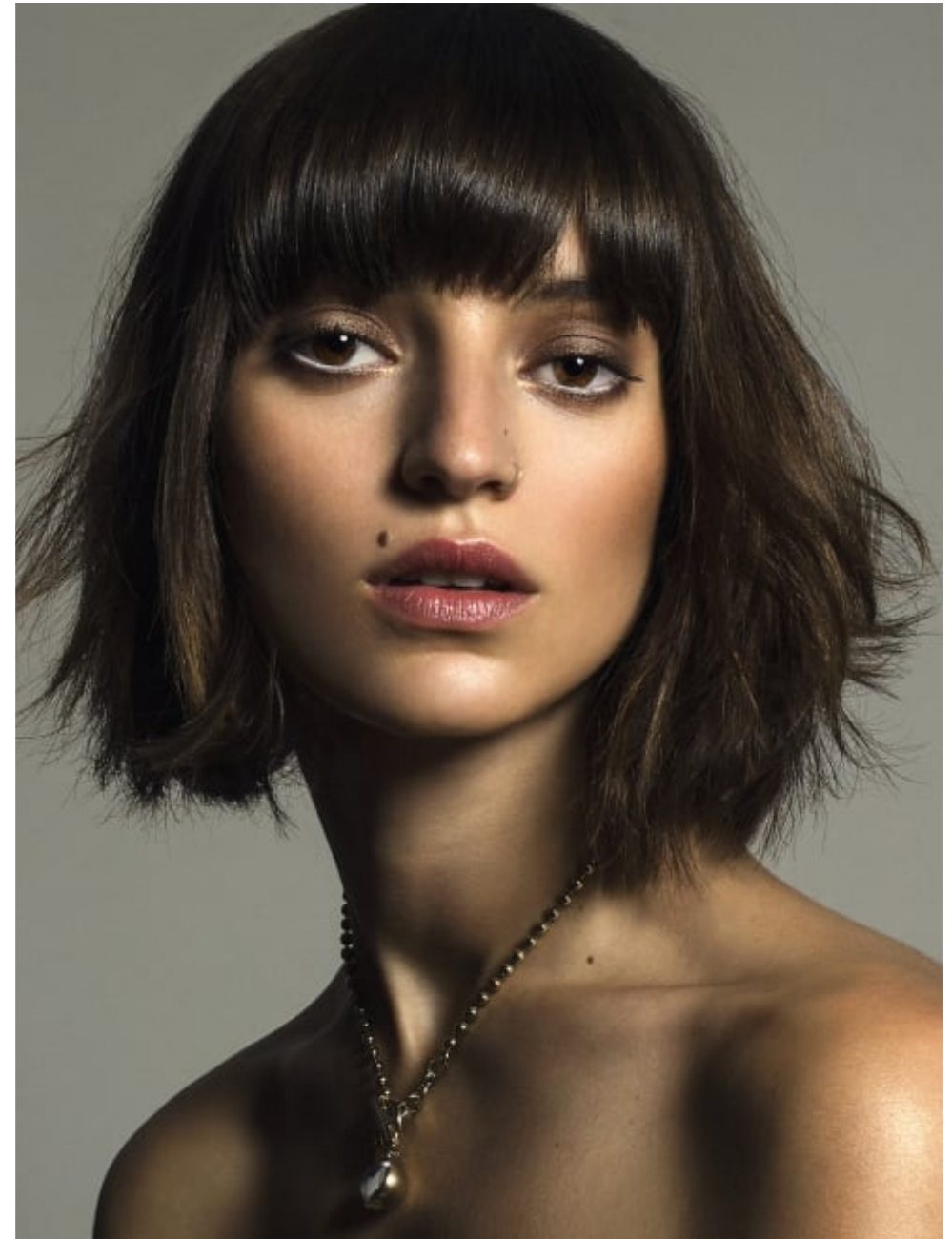
Hair & Makeup | Makeup | Mens Grooming  
Beauty

**CAROLHAYES  
MANAGEMENT**  
CREATIVE ARTIST & STYLE MANAGEMENT

020 7482 1555  
[www.carolhayesmanagement.co.uk](http://www.carolhayesmanagement.co.uk)



March 2024 / SNF 140



**Kenny Leung**

Hair & Makeup | Makeup | Mens Grooming  
Beauty

**CAROLHAYES  
MANAGEMENT**  
CREATIVE ARTIST & STYLE MANAGEMENT

020 7482 1555  
[www.carolhayesmanagement.co.uk](http://www.carolhayesmanagement.co.uk)