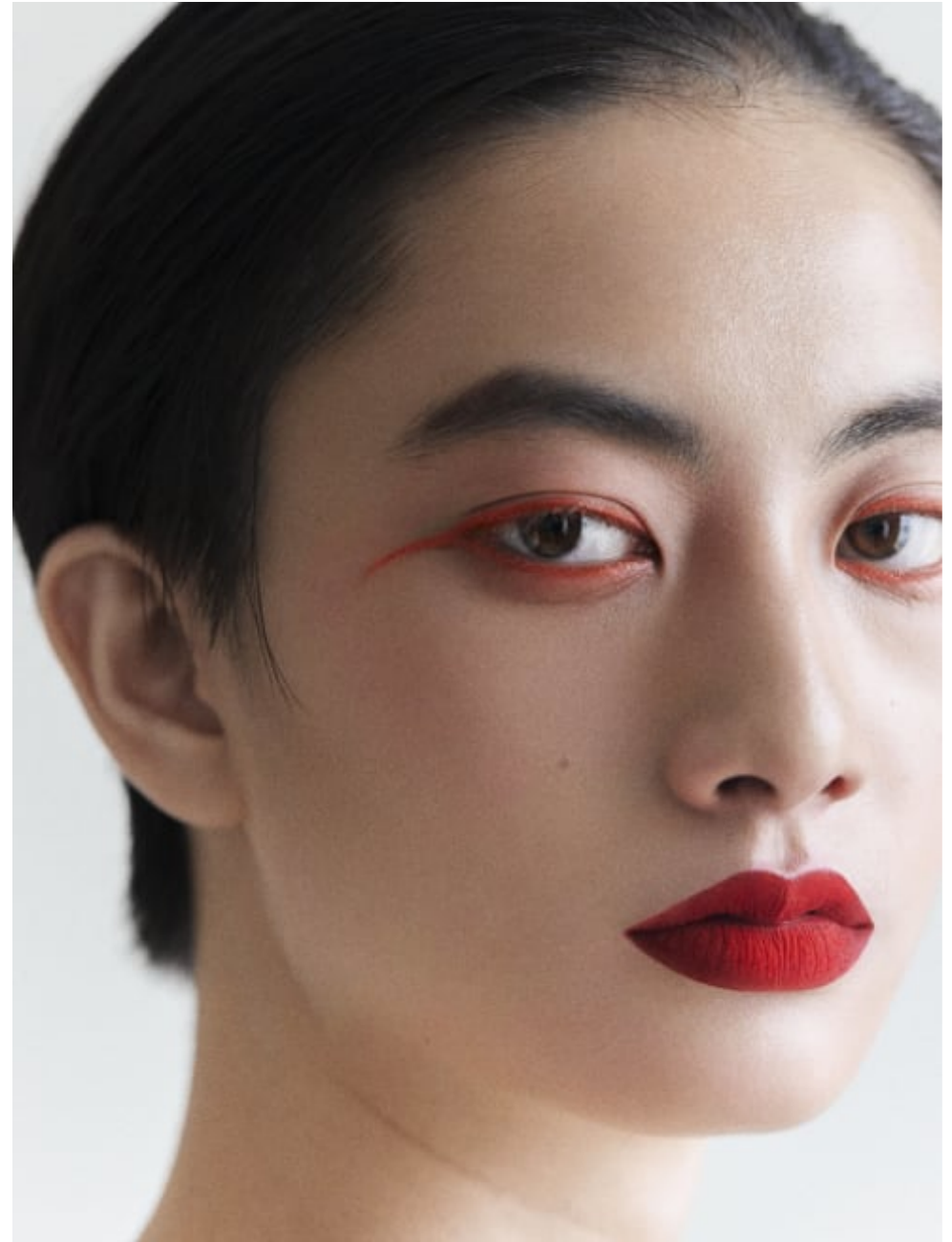


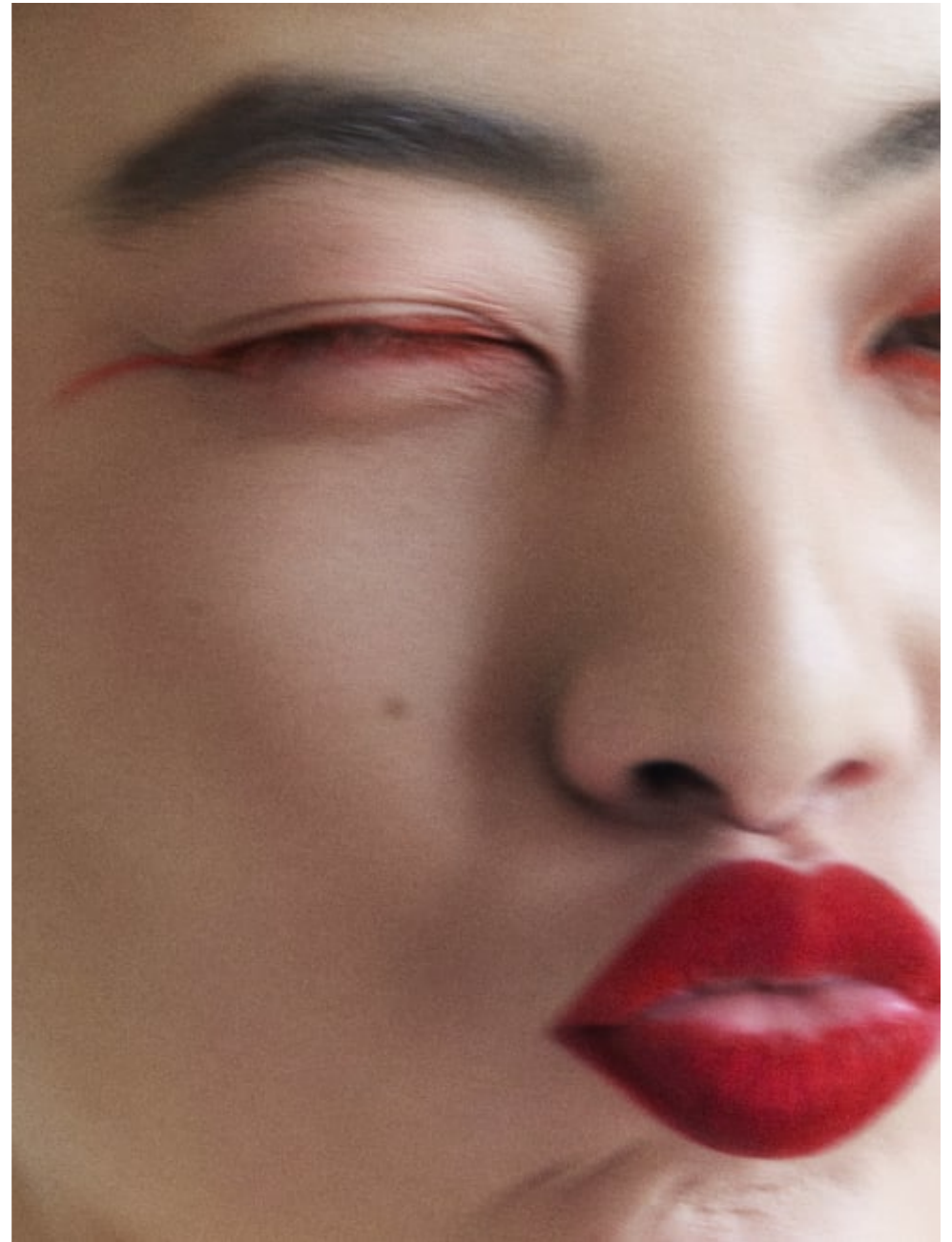
# Melanie Hoppe

Editorial





**Melanie Hoppe**  
Editorial



**CAROLHAYES  
MANAGEMENT**  
CREATIVE ARTIST & STYLE MANAGEMENT

020 7482 1555  
[www.carolhayesmanagement.co.uk](http://www.carolhayesmanagement.co.uk)



**Melanie Hoppe**  
Editorial



**CAROLHAYES  
MANAGEMENT**  
CREATIVE ARTIST & STYLE MANAGEMENT

020 7482 1555  
[www.carolhayesmanagement.co.uk](http://www.carolhayesmanagement.co.uk)



**Melanie Hoppe**  
Editorial



**CAROLHAYES  
MANAGEMENT**  
CREATIVE ARTIST & STYLE MANAGEMENT

020 7482 1555  
[www.carolhayesmanagement.co.uk](http://www.carolhayesmanagement.co.uk)



**Melanie Hoppe**  
Editorial



**CAROLHAYES  
MANAGEMENT**  
CREATIVE ARTIST & STYLE MANAGEMENT

020 7482 1555  
[www.carolhayesmanagement.co.uk](http://www.carolhayesmanagement.co.uk)



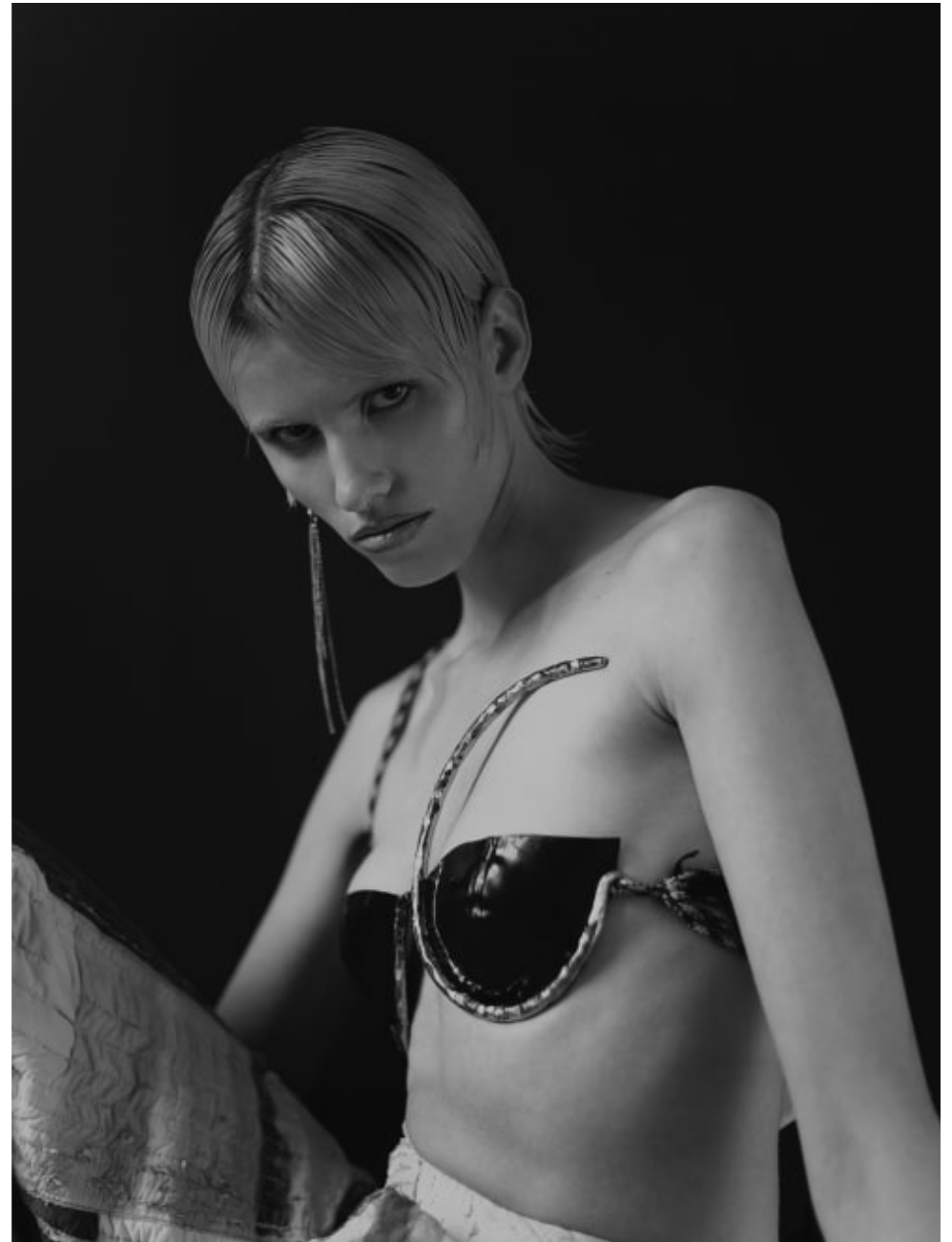
**Melanie Hoppe**  
Editorial

**CAROLHAYES**  
**MANAGEMENT**  
CREATIVE ARTIST & STYLE MANAGEMENT

020 7482 1555  
[www.carolhayesmanagement.co.uk](http://www.carolhayesmanagement.co.uk)



**Melanie Hoppe**  
Editorial

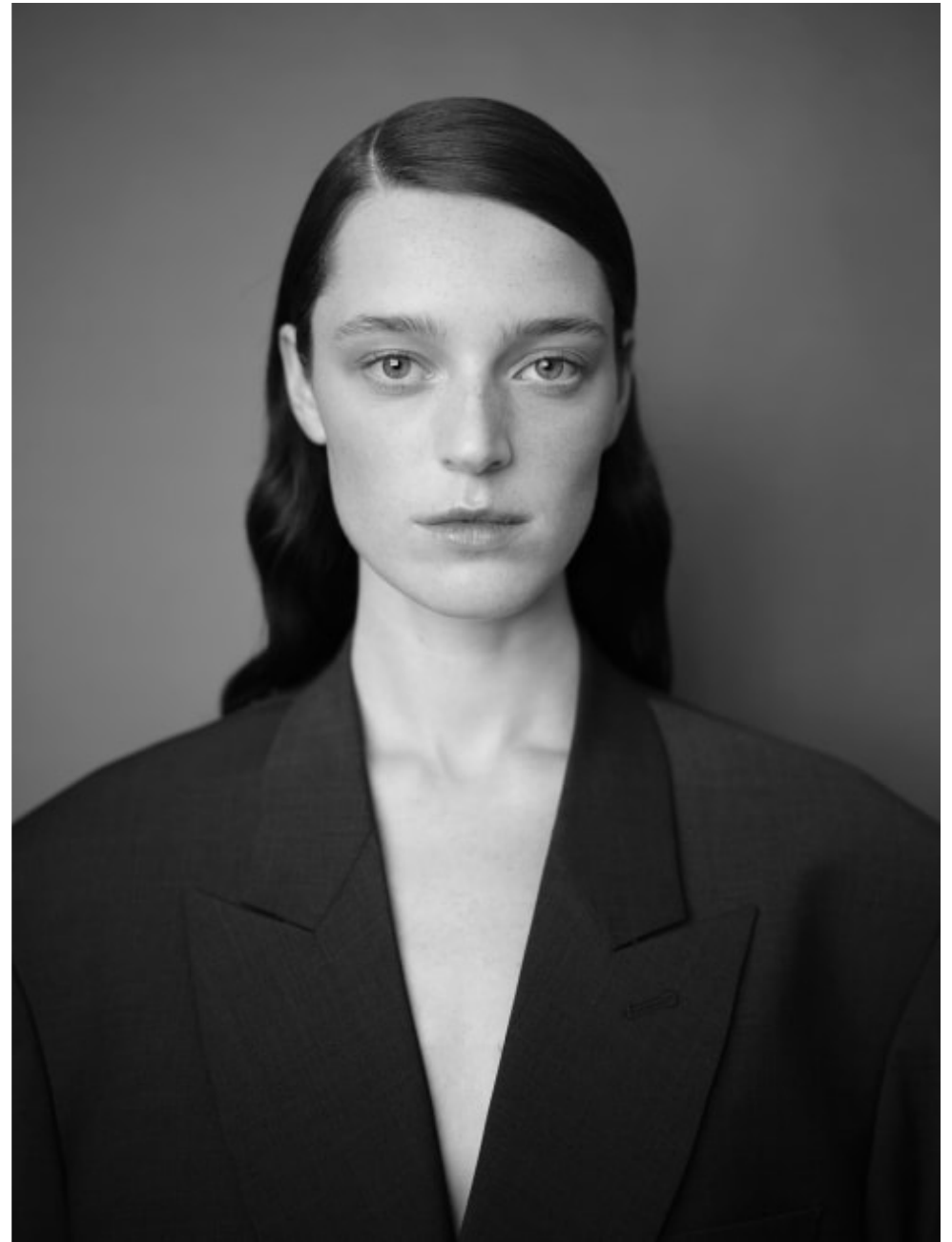


**CAROLHAYES**  
**MANAGEMENT**  
CREATIVE ARTIST & STYLE MANAGEMENT

020 7482 1555  
[www.carolhayesmanagement.co.uk](http://www.carolhayesmanagement.co.uk)



**Melanie Hoppe**  
Editorial



**CAROLHAYES  
MANAGEMENT**  
CREATIVE ARTIST & STYLE MANAGEMENT

020 7482 1555  
[www.carolhayesmanagement.co.uk](http://www.carolhayesmanagement.co.uk)



**Melanie Hoppe**  
Editorial

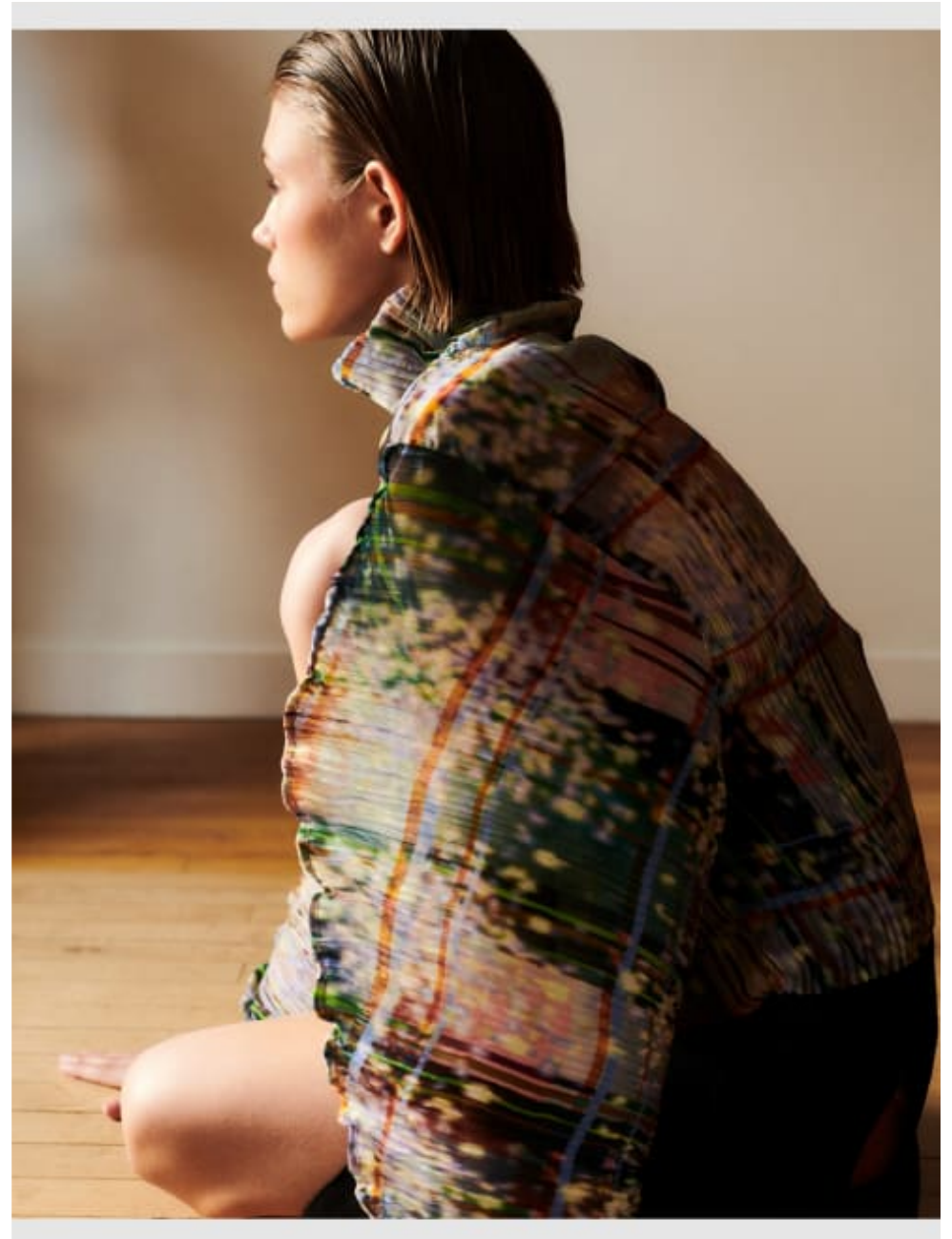


**CAROLHAYES  
MANAGEMENT**  
CREATIVE ARTIST & STYLE MANAGEMENT

020 7482 1555  
[www.carolhayesmanagement.co.uk](http://www.carolhayesmanagement.co.uk)



**Melanie Hoppe**  
Editorial



**CAROLHAYES  
MANAGEMENT**  
CREATIVE ARTIST & STYLE MANAGEMENT

020 7482 1555  
[www.carolhayesmanagement.co.uk](http://www.carolhayesmanagement.co.uk)



**Melanie Hoppe**  
Editorial



**CAROLHAYES**  
**MANAGEMENT**  
CREATIVE ARTIST & STYLE MANAGEMENT

020 7482 1555  
[www.carolhayesmanagement.co.uk](http://www.carolhayesmanagement.co.uk)



**Melanie Hoppe**  
Editorial

**CAROLHAYES  
MANAGEMENT**  
CREATIVE ARTIST & STYLE MANAGEMENT

020 7482 1555  
[www.carolhayesmanagement.co.uk](http://www.carolhayesmanagement.co.uk)



**Melanie Hoppe**  
Editorial

**CAROLHAYES**  
**MANAGEMENT**  
CREATIVE ARTIST & STYLE MANAGEMENT

020 7482 1555  
[www.carolhayesmanagement.co.uk](http://www.carolhayesmanagement.co.uk)



Melanie Hoppe  
Editorial



**CAROLHAYES**  
**MANAGEMENT**  
CREATIVE ARTIST & STYLE MANAGEMENT

020 7482 1555  
[www.carolhayesmanagement.co.uk](http://www.carolhayesmanagement.co.uk)



**Melanie Hoppe**  
Editorial



**CAROLHAYES**  
**MANAGEMENT**  
CREATIVE ARTIST & STYLE MANAGEMENT

020 7482 1555  
[www.carolhayesmanagement.co.uk](http://www.carolhayesmanagement.co.uk)



**Melanie Hoppe**  
Editorial



**CAROLHAYES  
MANAGEMENT**  
CREATIVE ARTIST & STYLE MANAGEMENT

020 7482 1555  
[www.carolhayesmanagement.co.uk](http://www.carolhayesmanagement.co.uk)



**Melanie Hoppe**  
Editorial

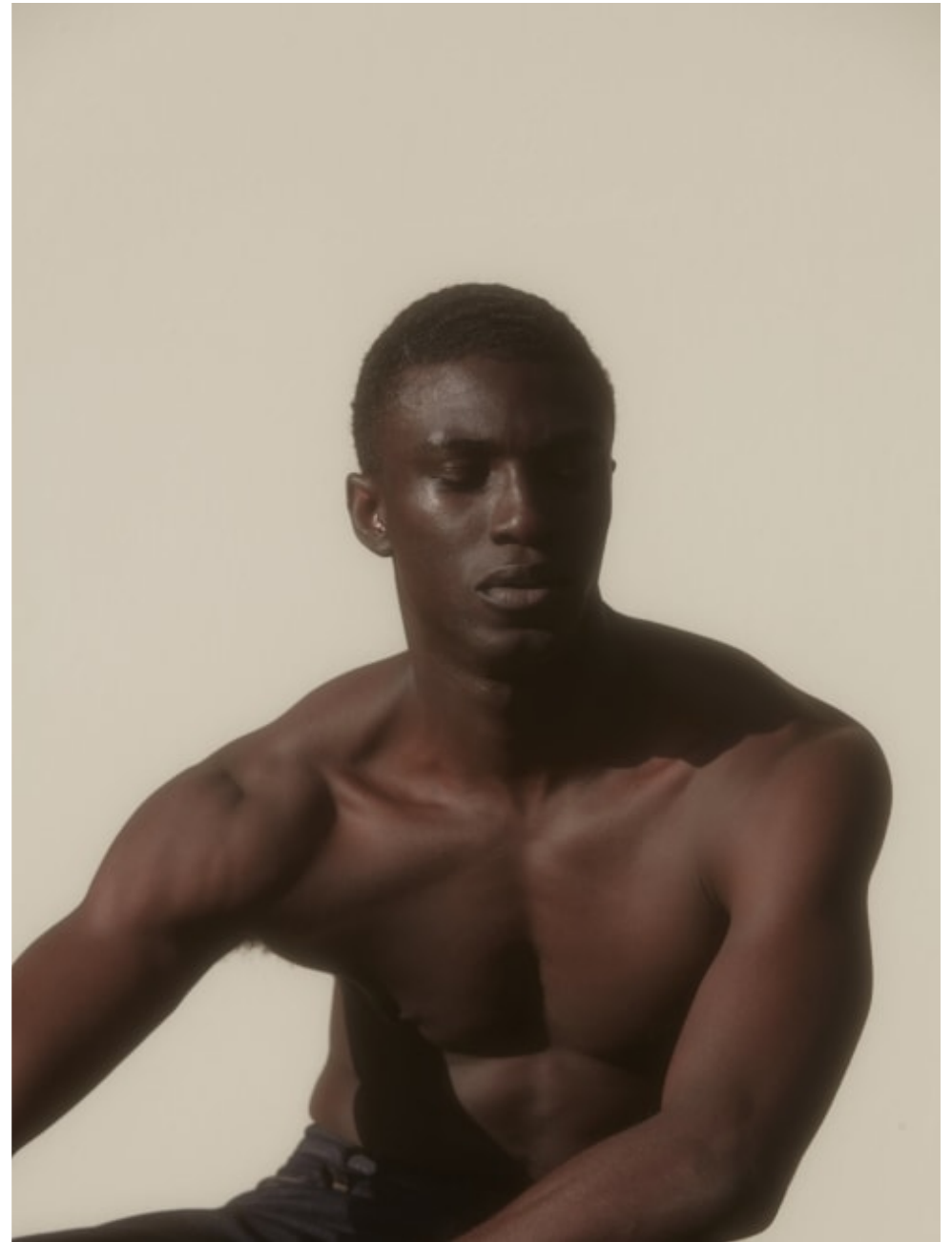


**CAROLHAYES**  
**MANAGEMENT**  
CREATIVE ARTIST & STYLE MANAGEMENT

020 7482 1555  
[www.carolhayesmanagement.co.uk](http://www.carolhayesmanagement.co.uk)



**Melanie Hoppe**  
Editorial

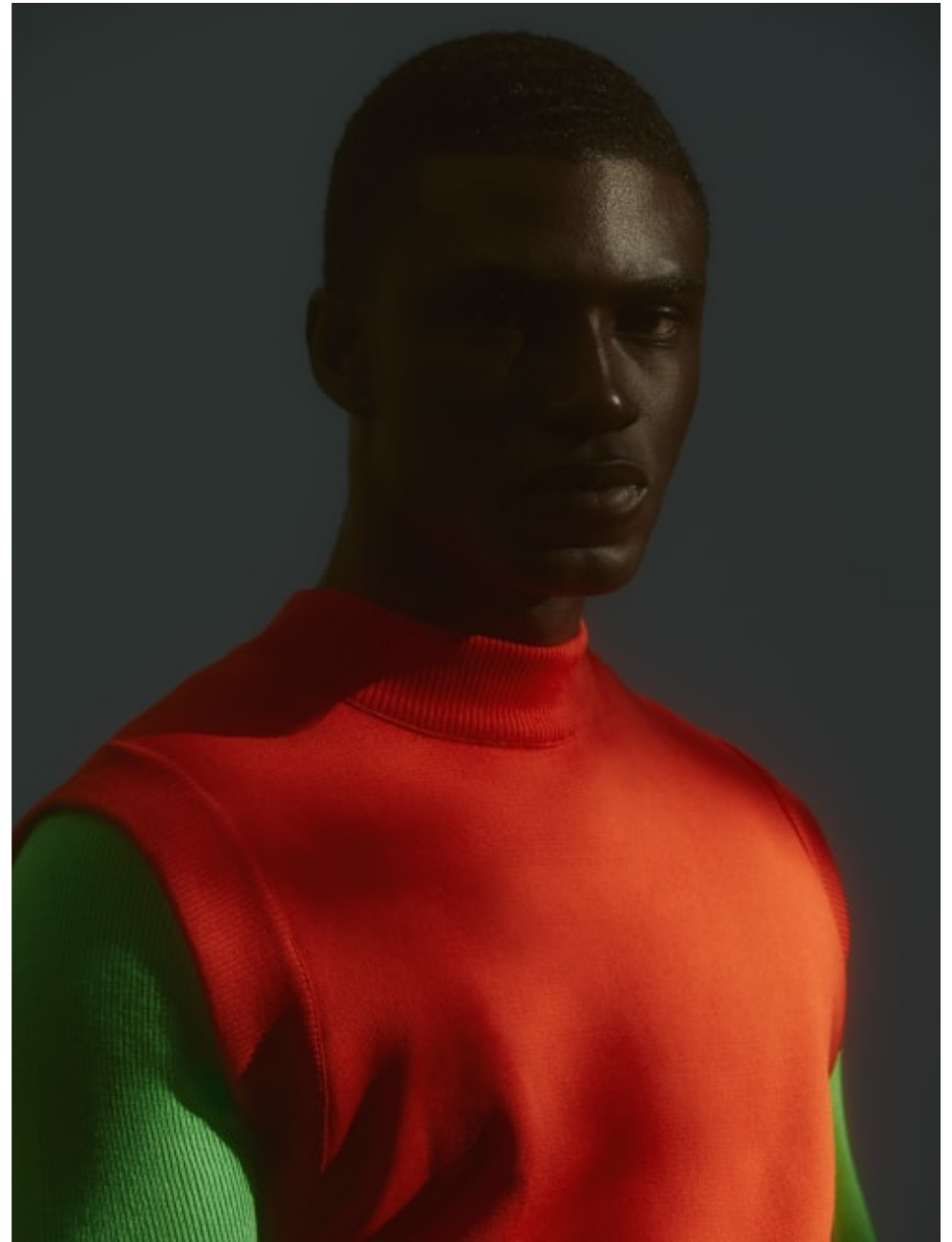


**CAROLHAYES  
MANAGEMENT**  
CREATIVE ARTIST & STYLE MANAGEMENT

020 7482 1555  
[www.carolhayesmanagement.co.uk](http://www.carolhayesmanagement.co.uk)



**Melanie Hoppe**  
Editorial



**CAROLHAYES**  
**MANAGEMENT**  
CREATIVE ARTIST & STYLE MANAGEMENT

020 7482 1555  
[www.carolhayesmanagement.co.uk](http://www.carolhayesmanagement.co.uk)

**Melanie Hoppe**  
Editorial

**CAROLHAYES**  
**MANAGEMENT**  
CREATIVE ARTIST & STYLE MANAGEMENT

020 7482 1555  
[www.carolhayesmanagement.co.uk](http://www.carolhayesmanagement.co.uk)

**Melanie Hoppe**  
Editorial

**CAROLHAYES**  
**MANAGEMENT**  
CREATIVE ARTIST & STYLE MANAGEMENT

020 7482 1555  
[www.carolhayesmanagement.co.uk](http://www.carolhayesmanagement.co.uk)



**Melanie Hoppe**  
Editorial

**CAROLHAYES  
MANAGEMENT**  
CREATIVE ARTIST & STYLE MANAGEMENT

020 7482 1555  
[www.carolhayesmanagement.co.uk](http://www.carolhayesmanagement.co.uk)



**Melanie Hoppe**  
Editorial

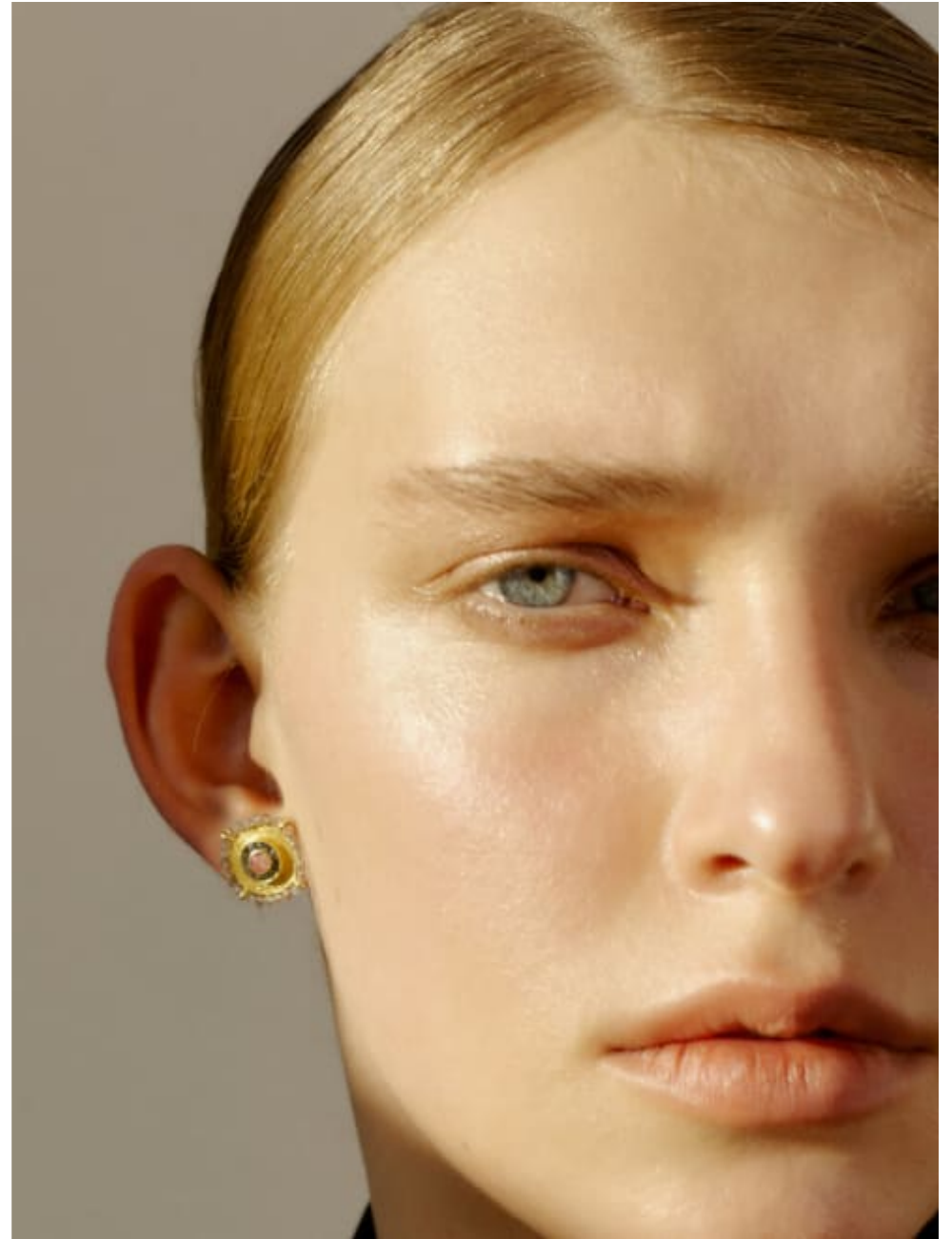


**CAROLHAYES  
MANAGEMENT**  
CREATIVE ARTIST & STYLE MANAGEMENT

020 7482 1555  
[www.carolhayesmanagement.co.uk](http://www.carolhayesmanagement.co.uk)



**Melanie Hoppe**  
Editorial



**CAROLHAYES**  
**MANAGEMENT**  
CREATIVE ARTIST & STYLE MANAGEMENT

020 7482 1555  
[www.carolhayesmanagement.co.uk](http://www.carolhayesmanagement.co.uk)



**Melanie Hoppe**  
Editorial

**CAROLHAYES**  
**MANAGEMENT**  
CREATIVE ARTIST & STYLE MANAGEMENT

020 7482 1555  
[www.carolhayesmanagement.co.uk](http://www.carolhayesmanagement.co.uk)



**Melanie Hoppe**  
Editorial

**CAROLHAYES  
MANAGEMENT**  
CREATIVE ARTIST & STYLE MANAGEMENT

020 7482 1555  
[www.carolhayesmanagement.co.uk](http://www.carolhayesmanagement.co.uk)



**Melanie Hoppe**  
Editorial

**CAROLHAYES  
MANAGEMENT**  
CREATIVE ARTIST & STYLE MANAGEMENT

020 7482 1555  
[www.carolhayesmanagement.co.uk](http://www.carolhayesmanagement.co.uk)

**Melanie Hoppe**  
Editorial

**CAROLHAYES**  
**MANAGEMENT**  
CREATIVE ARTIST & STYLE MANAGEMENT

020 7482 1555  
[www.carolhayesmanagement.co.uk](http://www.carolhayesmanagement.co.uk)



**Melanie Hoppe**  
Editorial

**CAROLHAYES**  
**MANAGEMENT**  
CREATIVE ARTIST & STYLE MANAGEMENT

020 7482 1555  
[www.carolhayesmanagement.co.uk](http://www.carolhayesmanagement.co.uk)



**Melanie Hoppe**  
Editorial

**CAROLHAYES  
MANAGEMENT**  
CREATIVE ARTIST & STYLE MANAGEMENT

020 7482 1555  
[www.carolhayesmanagement.co.uk](http://www.carolhayesmanagement.co.uk)



**Melanie Hoppe**  
Editorial



**CAROLHAYES  
MANAGEMENT**  
CREATIVE ARTIST & STYLE MANAGEMENT

020 7482 1555  
[www.carolhayesmanagement.co.uk](http://www.carolhayesmanagement.co.uk)



**Melanie Hoppe**  
Editorial

**CAROLHAYES  
MANAGEMENT**  
CREATIVE ARTIST & STYLE MANAGEMENT

020 7482 1555  
[www.carolhayesmanagement.co.uk](http://www.carolhayesmanagement.co.uk)



**Melanie Hoppe**  
Editorial

**CAROLHAYES  
MANAGEMENT**  
CREATIVE ARTIST & STYLE MANAGEMENT

020 7482 1555  
[www.carolhayesmanagement.co.uk](http://www.carolhayesmanagement.co.uk)



**Melanie Hoppe**  
Editorial

**CAROLHAYES  
MANAGEMENT**  
CREATIVE ARTIST & STYLE MANAGEMENT

020 7482 1555  
[www.carolhayesmanagement.co.uk](http://www.carolhayesmanagement.co.uk)



**Melanie Hoppe**  
Editorial



**CAROLHAYES  
MANAGEMENT**  
CREATIVE ARTIST & STYLE MANAGEMENT

020 7482 1555  
[www.carolhayesmanagement.co.uk](http://www.carolhayesmanagement.co.uk)



**Melanie Hoppe**  
Editorial



**CAROLHAYES**  
**MANAGEMENT**  
CREATIVE ARTIST & STYLE MANAGEMENT

020 7482 1555  
[www.carolhayesmanagement.co.uk](http://www.carolhayesmanagement.co.uk)



**Melanie Hoppe**  
Editorial

**CAROLHAYES  
MANAGEMENT**  
CREATIVE ARTIST & STYLE MANAGEMENT

020 7482 1555  
[www.carolhayesmanagement.co.uk](http://www.carolhayesmanagement.co.uk)



**Melanie Hoppe**  
Editorial

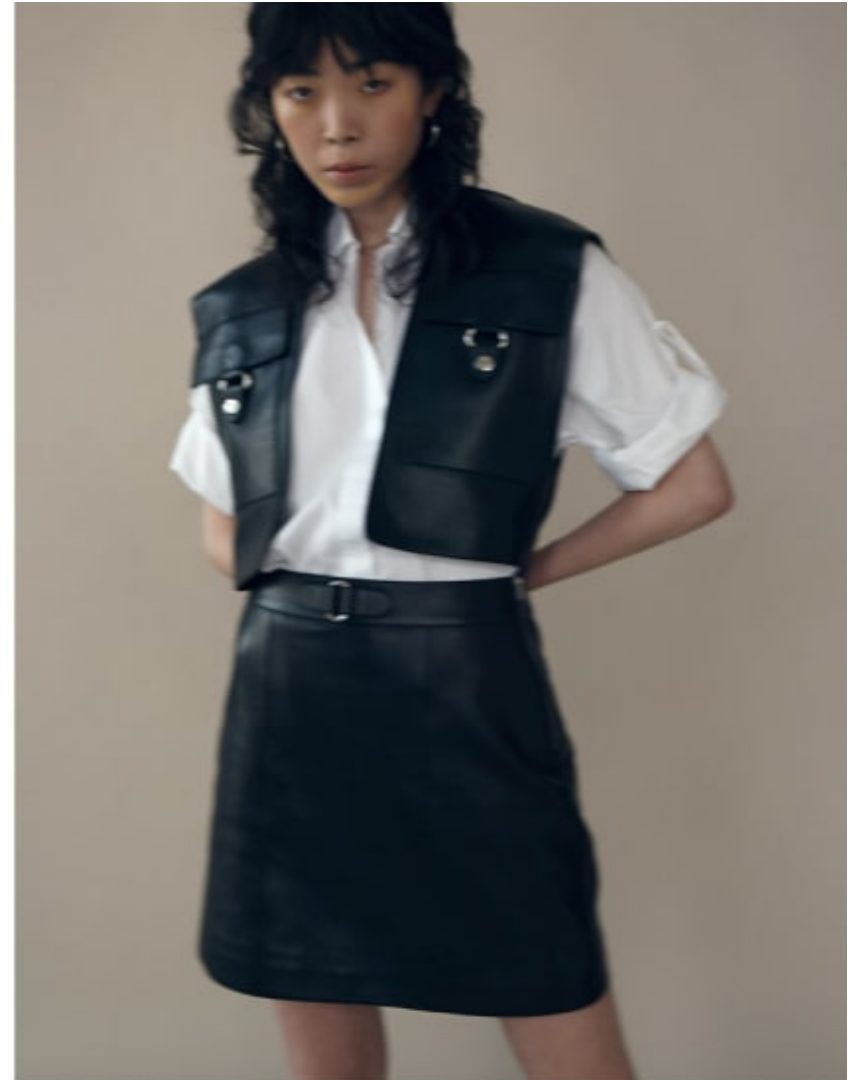


**CAROLHAYES  
MANAGEMENT**  
CREATIVE ARTIST & STYLE MANAGEMENT

020 7482 1555  
[www.carolhayesmanagement.co.uk](http://www.carolhayesmanagement.co.uk)



**Melanie Hoppe**  
Editorial



**CAROLHAYES  
MANAGEMENT**  
CREATIVE ARTIST & STYLE MANAGEMENT

020 7482 1555  
[www.carolhayesmanagement.co.uk](http://www.carolhayesmanagement.co.uk)



**Melanie Hoppe**  
Editorial



**CAROLHAYES  
MANAGEMENT**  
CREATIVE ARTIST & STYLE MANAGEMENT

020 7482 1555  
[www.carolhayesmanagement.co.uk](http://www.carolhayesmanagement.co.uk)



**Melanie Hoppe**  
Editorial



**CAROLHAYES**  
**MANAGEMENT**  
CREATIVE ARTIST & STYLE MANAGEMENT

020 7482 1555  
[www.carolhayesmanagement.co.uk](http://www.carolhayesmanagement.co.uk)



**Melanie Hoppe**  
Editorial



**CAROLHAYES  
MANAGEMENT**  
CREATIVE ARTIST & STYLE MANAGEMENT

020 7482 1555  
[www.carolhayesmanagement.co.uk](http://www.carolhayesmanagement.co.uk)



**Melanie Hoppe**  
Editorial



**CAROLHAYES**  
**MANAGEMENT**  
CREATIVE ARTIST & STYLE MANAGEMENT

020 7482 1555  
[www.carolhayesmanagement.co.uk](http://www.carolhayesmanagement.co.uk)

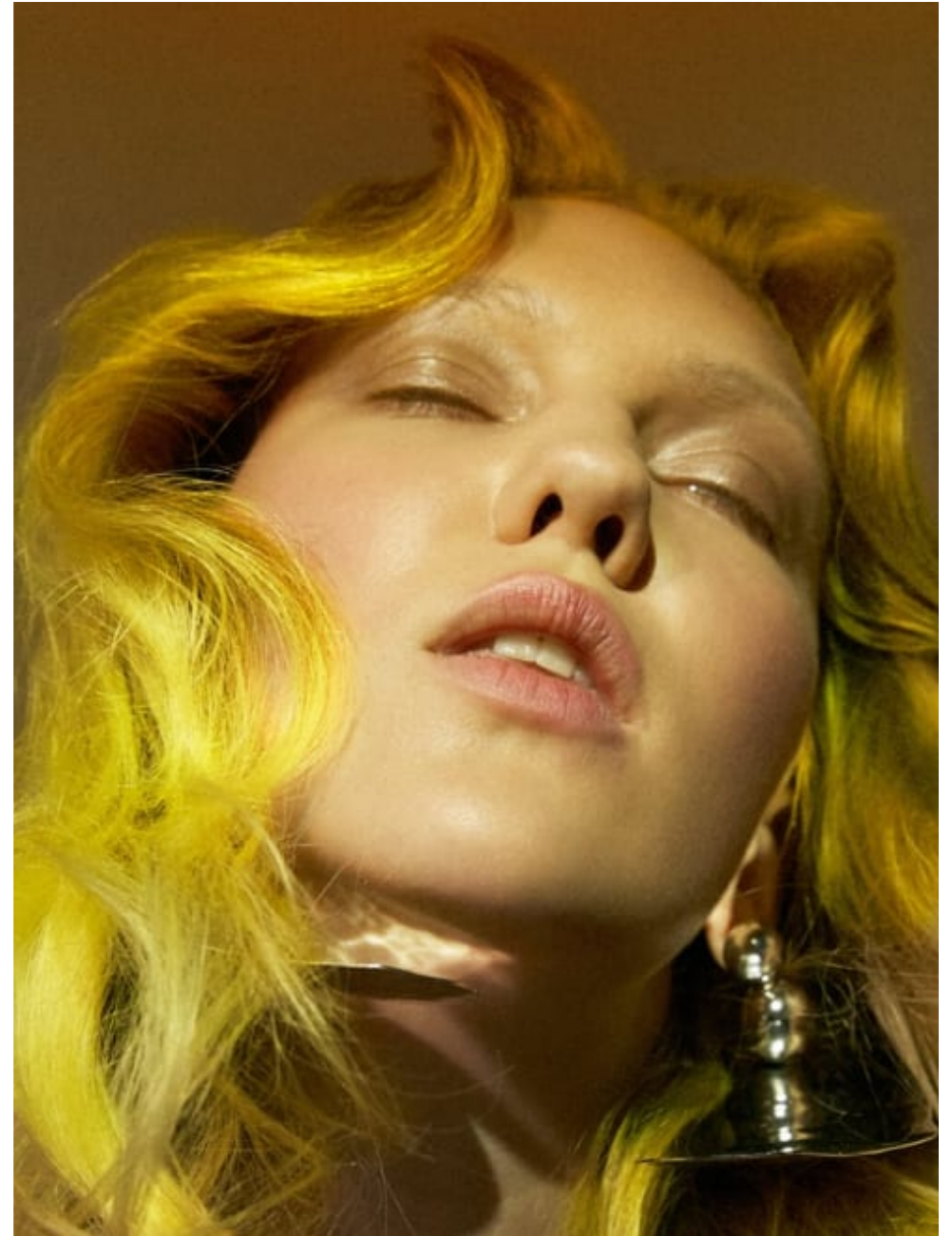


**Melanie Hoppe**  
Editorial



**CAROLHAYES  
MANAGEMENT**  
CREATIVE ARTIST & STYLE MANAGEMENT

020 7482 1555  
[www.carolhayesmanagement.co.uk](http://www.carolhayesmanagement.co.uk)



**Melanie Hoppe**  
Editorial

**CAROLHAYES  
MANAGEMENT**  
CREATIVE ARTIST & STYLE MANAGEMENT

020 7482 1555  
[www.carolhayesmanagement.co.uk](http://www.carolhayesmanagement.co.uk)



Melanie Hoppe  
Editorial

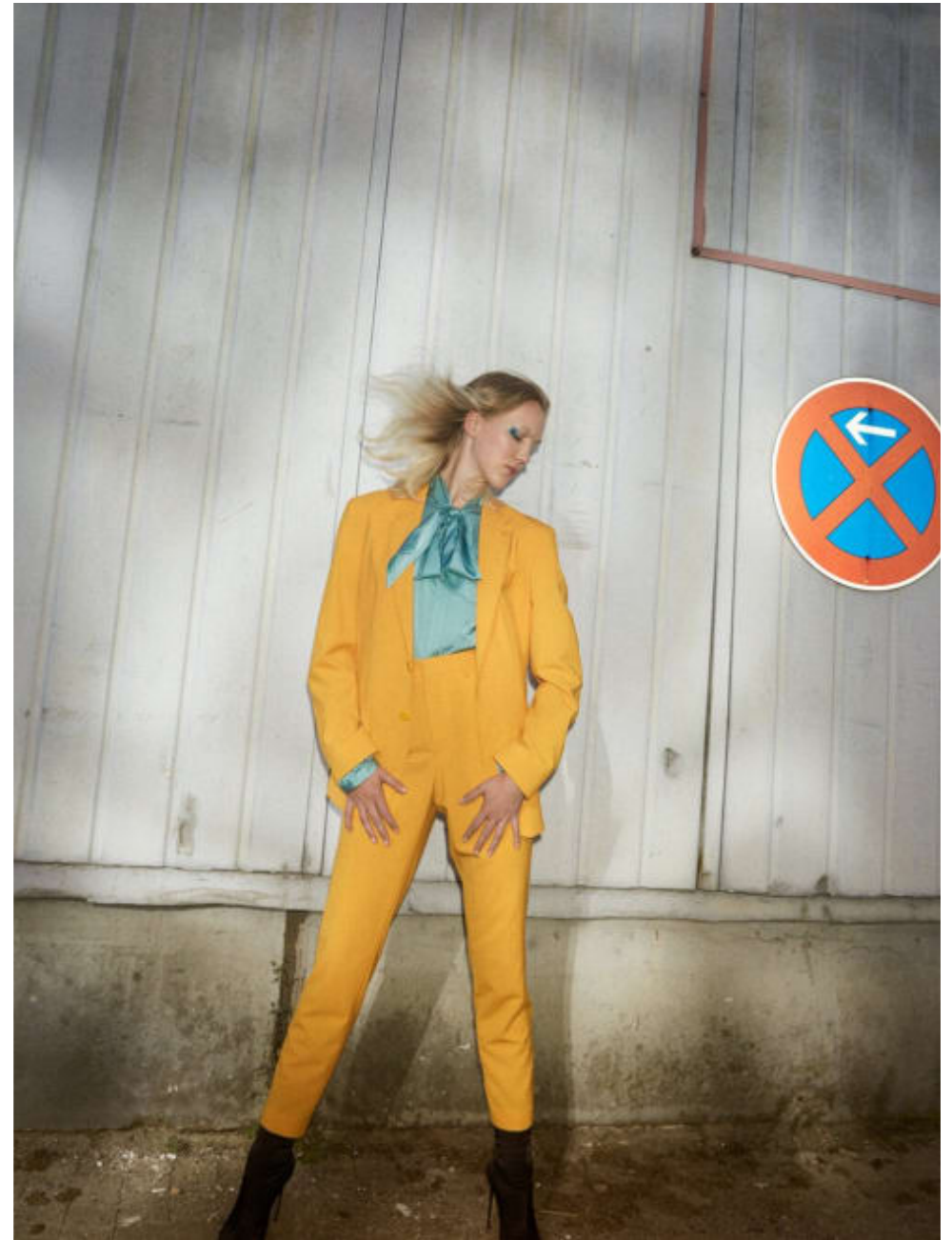


**CAROLHAYES**  
**MANAGEMENT**  
CREATIVE ARTIST & STYLE MANAGEMENT

020 7482 1555  
[www.carolhayesmanagement.co.uk](http://www.carolhayesmanagement.co.uk)



**Melanie Hoppe**  
Editorial



**CAROLHAYES**  
**MANAGEMENT**  
CREATIVE ARTIST & STYLE MANAGEMENT

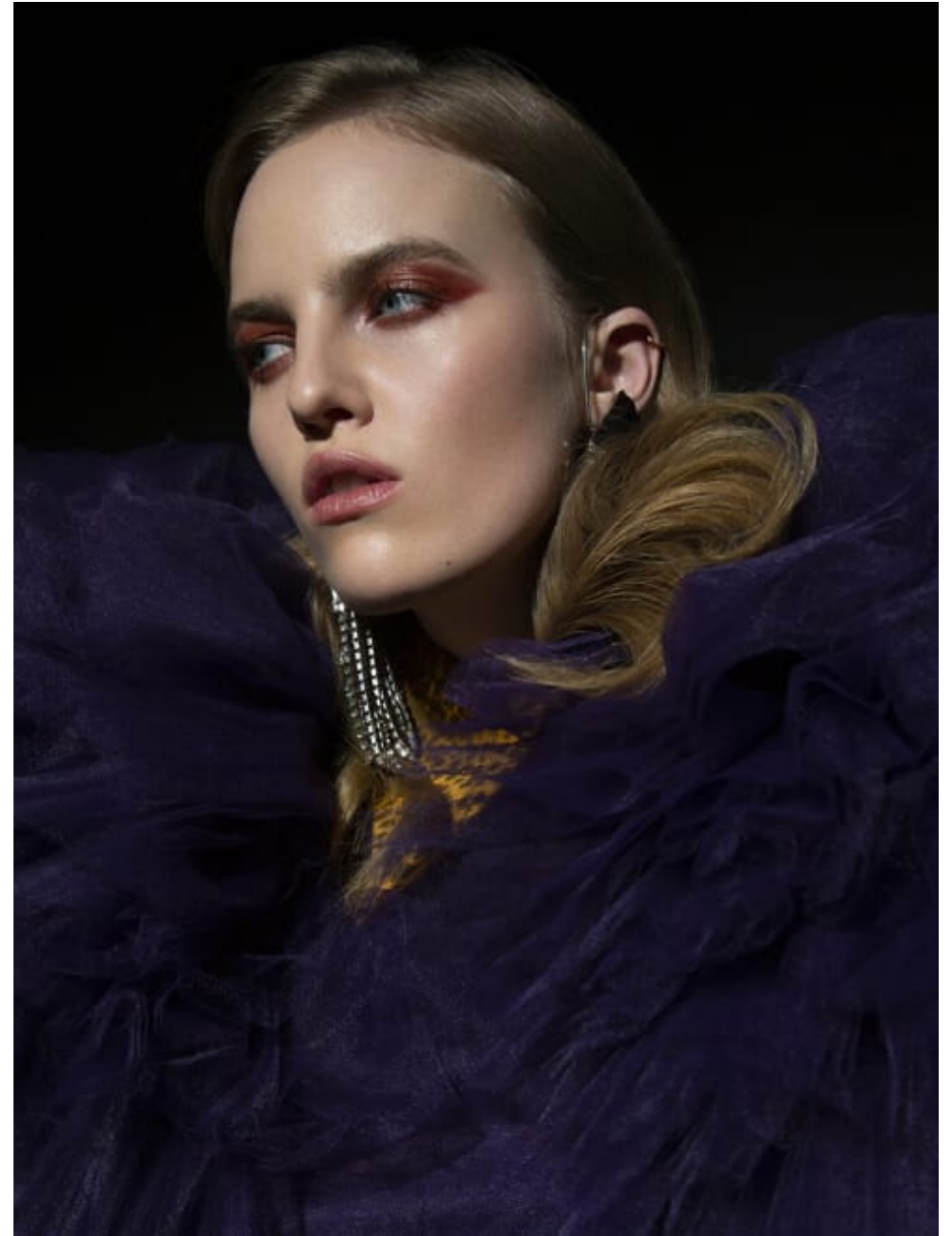
020 7482 1555  
[www.carolhayesmanagement.co.uk](http://www.carolhayesmanagement.co.uk)



WONDERSTRIPES Hidrogel maska za kožu igrasolju.  
BORBI BROWN Vitamin Enriched Eye Base saas obogaćena vitaminima.  
CHANEL Les Béges Trio Belle Minc Naturelle tečna podloga.  
TOM FORD Highlighter Duo paleta za lice.  
GUCCI L'Objet à la mode.  
MAYBE JACOBS Highlight Matte Gel obodica za oči.  
CHANEL Rouge Allure look soft, nijansa 272 Signature.  
Bianca 3:1 Phillip Lim.  
Pojica: Armani Collezioni.  
Kosice: Agent Pariscatena.  
Ogledica: Chanel.

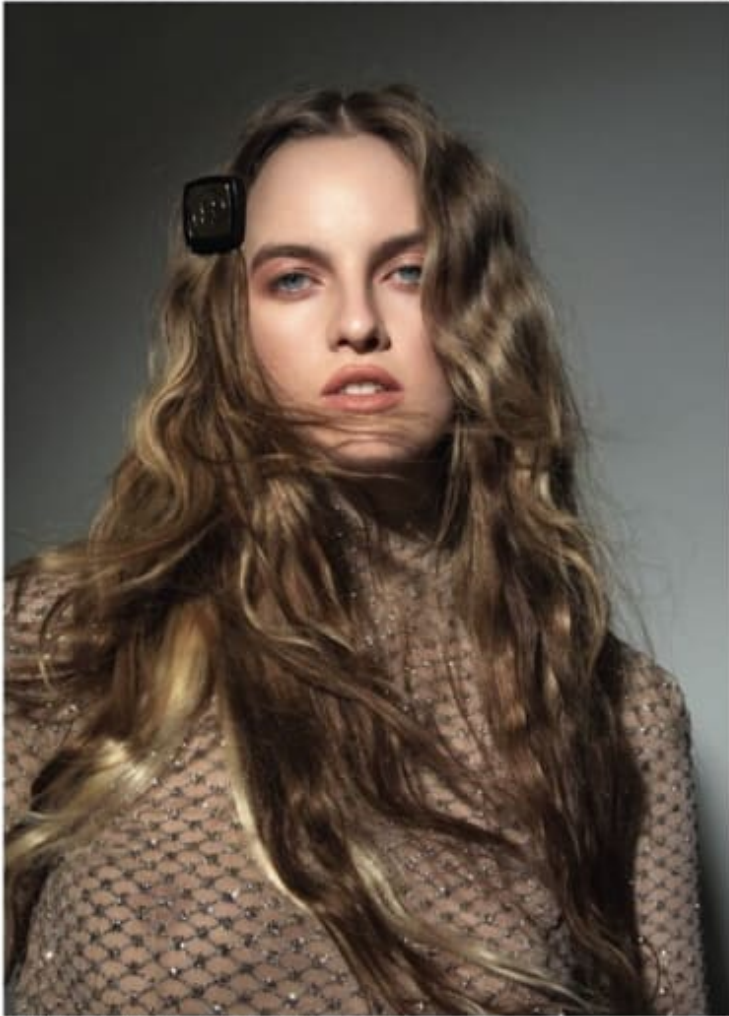
128 | ELLERS

Melanie Hoppe  
Editorial

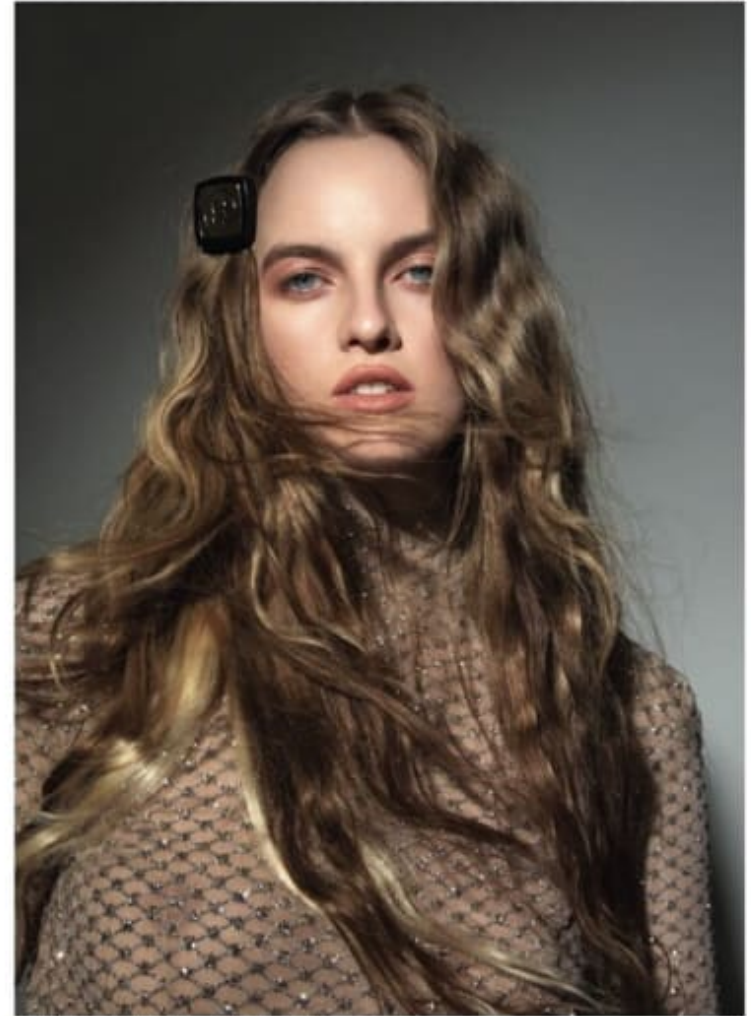


**CAROLHAYES**  
**MANAGEMENT**  
CREATIVE ARTIST & STYLE MANAGEMENT

020 7482 1555  
[www.carolhayesmanagement.co.uk](http://www.carolhayesmanagement.co.uk)



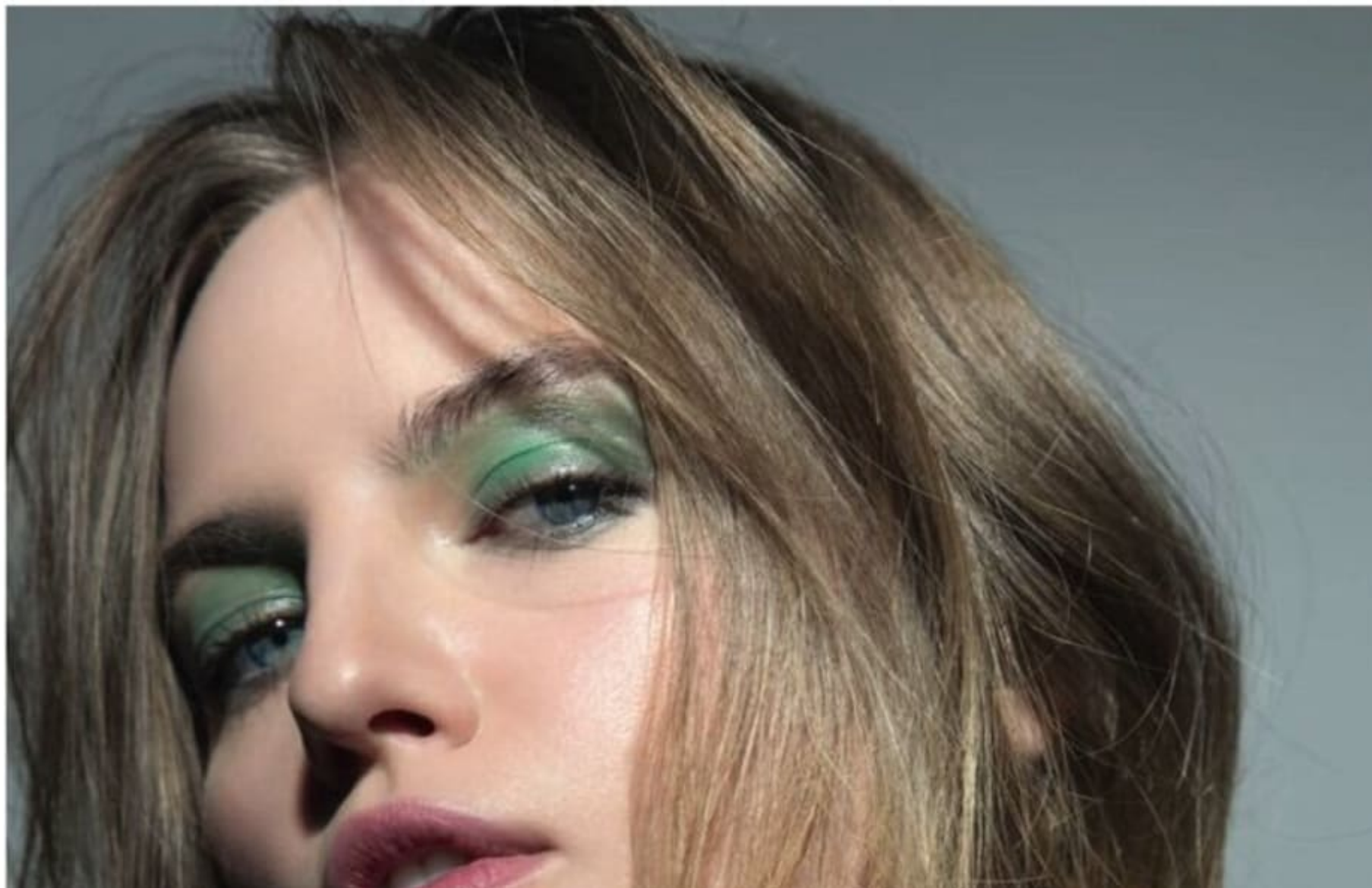
WONDERSTRIPES Hidroliti maska za kožu ispod očiju.  
 BOBBI BROWN Vitamin E i kivični Face Base baza obogaćena vitaminima.  
 CHANEL Les Bèiges Trini Belle Mine Naturelle tečna podloga.  
 TOM FORD Highlighter Duo paketa za lice.  
 GUCCI L'Uomo maskara.  
 DIOR Backstage paketa senki, nijansa 001.  
 DIOR Backstage paketa za usne.  
 CHARLOTTE TILBURY Check 'n' Chic osnove.  
 Bitna: Joann Erban Cosmetics.  
 Make-up: Chanel via Nightshotique



WONDERSTRIPES Hidroliti maska za kožu ispod očiju.  
 BOBBI BROWN Vitamin E i kivični Face Base baza obogaćena vitaminima.  
 CHANEL Les Bèiges Trini Belle Mine Naturelle tečna podloga.  
 TOM FORD Highlighter Duo paketa za lice.  
 GUCCI L'Uomo maskara.  
 DIOR Backstage paketa senki, nijansa 001.  
 DIOR Backstage paketa za usne.  
 CHARLOTTE TILBURY Check 'n' Chic osnove.  
 Bitna: Joann Erban Cosmetics.  
 Make-up: Chanel via Nightshotique



WONDERSTRIPES Hydrogel make-up kaha joprol otijtu.  
BOBBI BROWN Vitamin Enriched Face Base bota shog'ena vitaminima.  
CHANEL Les Beiges Éclat Beige Mince Natarabla to'ua po'ofona.  
GUCCI La Dk Beauty Effect Luminoso kreimanu o'ua na faa.  
CHANEL Rouge Allure Ink-rod, o'amaa 1% Warm Beige.  
CHANEL Les Beiges Rouge Stick rime'ede i'otika, o'amaa 23.  
Hugoboss L'oro L'oro.  
Ophelia Venezia



**Melanie Hoppe**  
Editorial



A PIROSÍTÁS  
TOBB ÉVSZÁZADOS  
HAGYOMÁNYA  
MINDUNTALAN  
RABUL EJT MINKET,  
A SZOKÁSOS BABÁS  
IRÁNY HE LYETT  
EZUTTAL BÁT RAN  
HELYETTESÍTSD VELE  
A KON TÜRÖD, ÉS HINTSD  
VÉGIG A SZEMHEJÁDON IS!  
Fülbevaló LOEBE  
Blúz ESCADA



GLAMOUR Beauty

IDŐVEL  
RÁDÖBBENSZ,  
HOGY A KEVESEBB  
SZINTE MINDEN  
ESETBEN TÖBRET  
JELENT, A TÖKELTES  
BŐRKEP MINDÖSSZE  
EGY MOZDULAT,  
ÉS EZ EPPEN ELÉG IS,  
HOGY MAGABIZTOS  
LEGYEL.

Melanie Hoppe  
Editorial

**CAROLHAYES  
MANAGEMENT**  
CREATIVE ARTIST & STYLE MANAGEMENT

020 7482 1555  
[www.carolhayesmanagement.co.uk](http://www.carolhayesmanagement.co.uk)

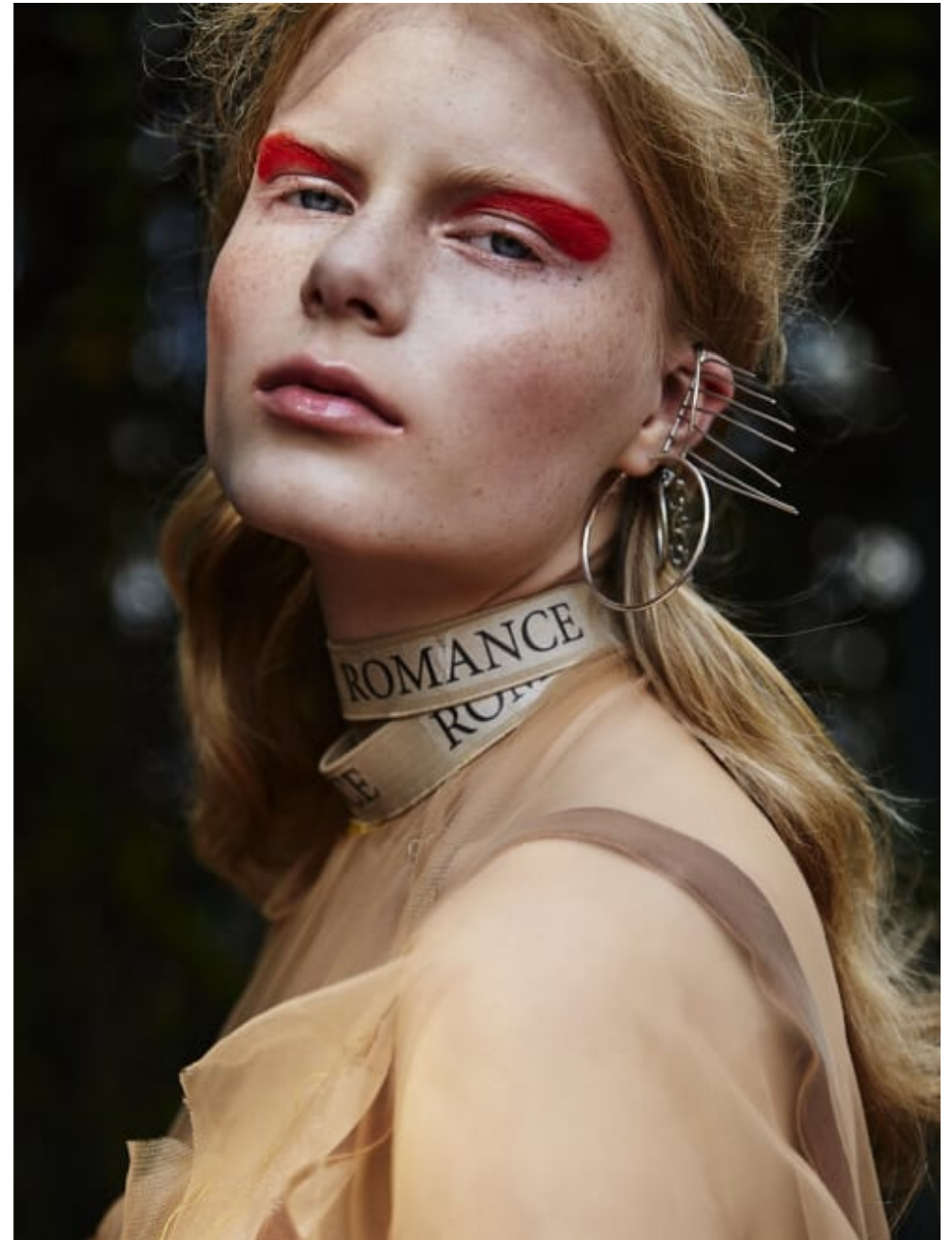


**Melanie Hoppe**  
Editorial



**CAROLHAYES  
MANAGEMENT**  
CREATIVE ARTIST & STYLE MANAGEMENT

020 7482 1555  
[www.carolhayesmanagement.co.uk](http://www.carolhayesmanagement.co.uk)



**Melanie Hoppe**  
Editorial

**CAROLHAYES**  
**MANAGEMENT**  
CREATIVE ARTIST & STYLE MANAGEMENT

020 7482 1555  
[www.carolhayesmanagement.co.uk](http://www.carolhayesmanagement.co.uk)



**Melanie Hoppe**  
Editorial



**CAROLHAYES  
MANAGEMENT**  
CREATIVE ARTIST & STYLE MANAGEMENT

020 7482 1555  
[www.carolhayesmanagement.co.uk](http://www.carolhayesmanagement.co.uk)



**DIESE SEITE:**  
Vergiltes Stoffmüllentafel  
aus Spitze mit langer Sei-  
denkappe. Von Chanel, um  
36.600 Euro. Armbänder:  
Chanel. Choker/Larve, Pumps  
mit Wildlederrose: Roger Vivier

**RECHTE SEITE:**  
Levi (L) trägt ein Baum-  
wollhemd in Caradigan und  
Bundfaltenhose, Hemd von  
Kenzo, um 90 Euro. Strickjacke  
von Polo Ralph Lauren, um 110  
Euro. Flanellhose von Il Gufo,  
um 90 Euro. Sonnenbrille:  
Fleige; Hermès. Jack trägt das  
gleiche Hemd und den Caradigan  
in einer anderen Farbkombi-  
nation. Hose von Babott, um  
30 Euro. Schuhe: Doc Martens.  
Fleige: Hermès

Obere Reihe, von links: Marie trägt ein Perlenkleid von Dries Van Noten, um 1.220 Euro. Rollkäppchenpullover von Ann Demeulemeester, um 620 Euro. Stumpfbare: Marjant. Gloria: Kleid von Dior, über nichts.com, um 1.450 Euro. Rosalie: Seidentop von Lanvin, um 2.190 Euro. Fleur von Lemaire, um 570 Euro. Oberringe: Marjanta von Berlepsch. Choker: Elle Saab. Mafalda: Kleid von Dior, über nichts.com, um 1.050 Euro. Schuhe: Pretty Ballerinas.

Untere Reihe, von links: Marina im Langblauer von Versace, um 2.750 Euro. Spitzenkleid von Etro, Preis auf Anfrage. Mules: Nina Ricci. Tasche: Sonia Rykiel. Eliza: Jacket von Diquard2, um 300 Euro, und Hemd von DelLago, um 115 Euro, beides über nichts.com. Huse von Kerzo, um 110 Euro. Schuhe: Ugg. Merré: Bodentlange Kleid mit Brüche, von Rochas, um 1.770 Euro. Talia: Kleid von Dior, über nichts.com, um 1.400 Euro. Ballerinas: Bonpoint. John: Dreiteiler und Laufert von Dolce & Gabbana, Preise auf Anfrage. Robin: Pullover von Marc Jacobs, über styletop.com, um 320 Euro. Mantel von Versace, um 5.900 Euro. Levi: Anzug von Dolce & Gabbana, über nichts.com, um 775 Euro. Hemd: El Gafu, über nichts.com, um 85 Euro. Schuhe: privat



# LET'S CELEBRATE!

Alle haben sich feingemacht für die schönste Party des Jahres:  
ein Familienfest der ganz besonderen Art

FOTOS: LOUIS DECAMPE

Modelle: Mirell Barthen für Iconic Management, Rosali für Mega Models, Marina für Most Wanted, John Anderson für Place Models, Robin für Tune Models. Zusätzliche Modelle: Thanks to Family & Friends! Haare & Make-up: Melanie Kavia für Ballhaus, Ana Lucie, Veronika Edel, Melanie Hoppe. Assistent: Brittnay Robinson. Produktionsassistenten: Farah Heiß, Lisa Kanschak. Wir danken der Porzellan Manufaktur Nymphenburg für die freundliche Unterstützung. PRODUKTION: NATALIE MANCHOT, KAROLIN HELOU, KONSTANTIN SPACHIS



Melanie Hoppe  
Editorial



## the shape shift

photography. mirja zentgraf  
fashion. olivier mohringe

**CAROLHAYES**  
**MANAGEMENT**  
CREATIVE ARTIST & STYLE MANAGEMENT

020 7482 1555  
[www.carolhayesmanagement.co.uk](http://www.carolhayesmanagement.co.uk)



**Melanie Hoppe**  
Editorial



**CAROLHAYES  
MANAGEMENT**  
CREATIVE ARTIST & STYLE MANAGEMENT

020 7482 1555  
[www.carolhayesmanagement.co.uk](http://www.carolhayesmanagement.co.uk)



**Melanie Hoppe**  
Editorial



**CAROLHAYES  
MANAGEMENT**  
CREATIVE ARTIST & STYLE MANAGEMENT

020 7482 1555  
[www.carolhayesmanagement.co.uk](http://www.carolhayesmanagement.co.uk)



**Melanie Hoppe**  
Editorial

**CAROLHAYES**  
**MANAGEMENT**  
CREATIVE ARTIST & STYLE MANAGEMENT

020 7482 1555  
[www.carolhayesmanagement.co.uk](http://www.carolhayesmanagement.co.uk)



**Melanie Hoppe**  
Editorial



**CAROLHAYES  
MANAGEMENT**  
CREATIVE ARTIST & STYLE MANAGEMENT

020 7482 1555  
[www.carolhayesmanagement.co.uk](http://www.carolhayesmanagement.co.uk)



**Melanie Hoppe**  
Editorial



**CAROLHAYES  
MANAGEMENT**  
CREATIVE ARTIST & STYLE MANAGEMENT

020 7482 1555  
[www.carolhayesmanagement.co.uk](http://www.carolhayesmanagement.co.uk)



photography: Tamer Turmkaya  
fashion: Hakan Solak  
model: Freddy Engel @ Core  
hair + make up: Melanie Hoppe using Aveda Cosmetics  
style assistant: Melanie Couste

**Melanie Hoppe**  
Editorial

**CAROLHAYES**  
**MANAGEMENT**  
CREATIVE ARTIST & STYLE MANAGEMENT

020 7482 1555  
[www.carolhayesmanagement.co.uk](http://www.carolhayesmanagement.co.uk)



**Melanie Hoppe**  
Editorial

**CAROLHAYES**  
**MANAGEMENT**  
CREATIVE ARTIST & STYLE MANAGEMENT

020 7482 1555  
[www.carolhayesmanagement.co.uk](http://www.carolhayesmanagement.co.uk)

# welcome to the new world

photography + art direction, tobias wirth  
fashion, kostantinos gkoumpetis

Melanie Hoppe  
Editorial



**CAROLHAYES**  
**MANAGEMENT**  
CREATIVE ARTIST & STYLE MANAGEMENT

020 7482 1555  
[www.carolhayesmanagement.co.uk](http://www.carolhayesmanagement.co.uk)



**Melanie Hoppe**  
Editorial



**CAROLHAYES**  
**MANAGEMENT**  
CREATIVE ARTIST & STYLE MANAGEMENT

020 7482 1555  
[www.carolhayesmanagement.co.uk](http://www.carolhayesmanagement.co.uk)



**Melanie Hoppe**  
Editorial

**CAROLHAYES  
MANAGEMENT**  
CREATIVE ARTIST & STYLE MANAGEMENT

020 7482 1555  
[www.carolhayesmanagement.co.uk](http://www.carolhayesmanagement.co.uk)



**Melanie Hoppe**  
Editorial



**CAROLHAYES**  
**MANAGEMENT**  
CREATIVE ARTIST & STYLE MANAGEMENT

020 7482 1555  
[www.carolhayesmanagement.co.uk](http://www.carolhayesmanagement.co.uk)



**Melanie Hoppe**  
Editorial



**CAROLHAYES**  
**MANAGEMENT**  
CREATIVE ARTIST & STYLE MANAGEMENT

020 7482 1555  
[www.carolhayesmanagement.co.uk](http://www.carolhayesmanagement.co.uk)



Melanie Hoppe  
Editorial

**CAROLHAYES  
MANAGEMENT**  
CREATIVE ARTIST & STYLE MANAGEMENT

020 7482 1555  
[www.carolhayesmanagement.co.uk](http://www.carolhayesmanagement.co.uk)



Melanie Hoppe  
Editorial

**CAROLHAYES**  
**MANAGEMENT**  
CREATIVE ARTIST & STYLE MANAGEMENT

020 7482 1555  
[www.carolhayesmanagement.co.uk](http://www.carolhayesmanagement.co.uk)



CLÉMENCE & MARGAUX

»CM391 L'Ouverte D'Esprit«

© 2017 BRACHMANN



PORSCHE DESIGN

»P18937«

© 2017 BRACHMANN

© 2017 HALA ALHARBAWI



Melanie Hoppe  
Editorial





**GIGI STUDIOS**

»Corale«

©dress ISABEL VOLLRATH

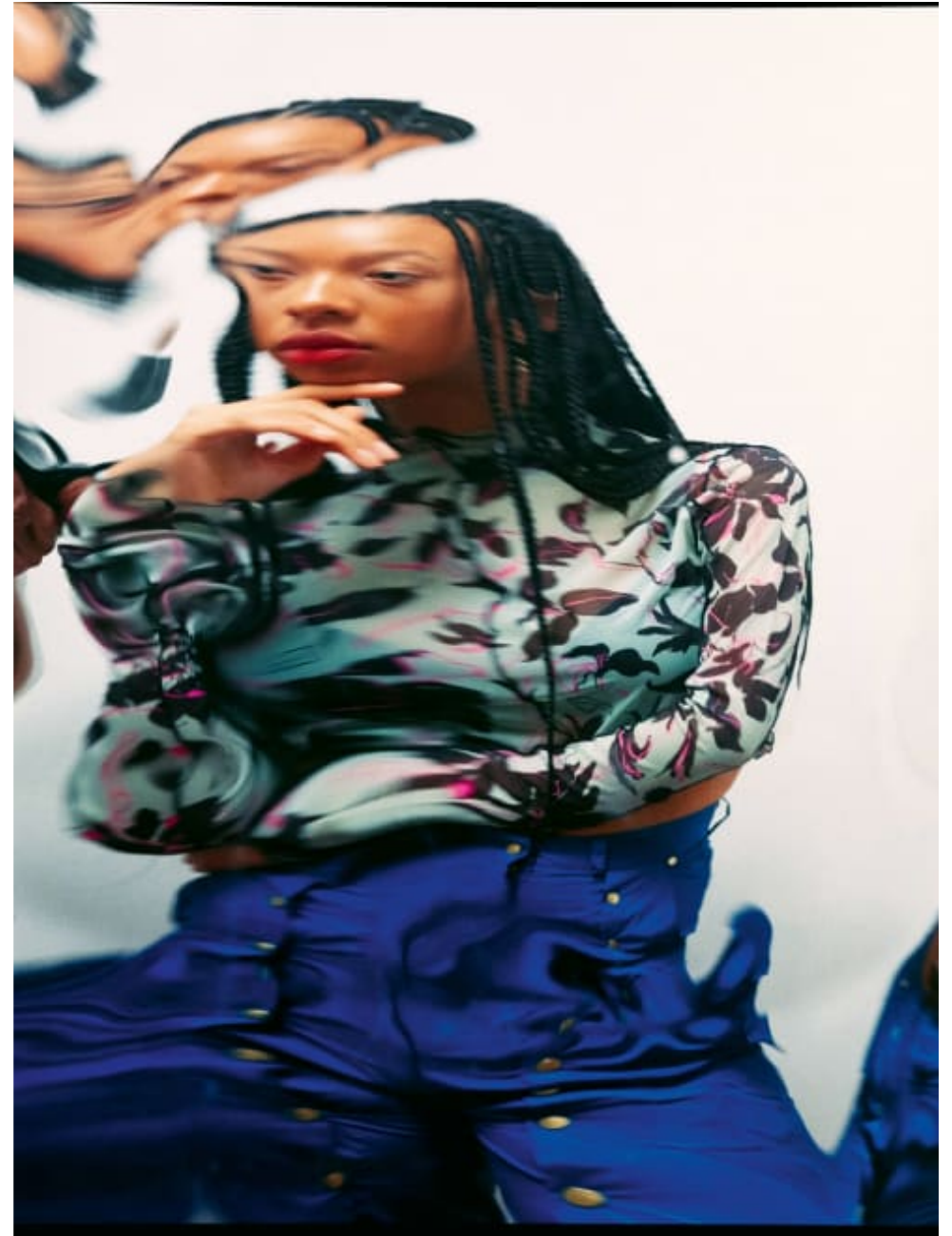


**MODO**

»4108«

©dress ISABEL VOLLRATH

**Melanie Hoppe**  
Editorial



Melanie Hoppe  
Editorial

**CAROLHAYES  
MANAGEMENT**  
CREATIVE ARTIST & STYLE MANAGEMENT

020 7482 1555  
[www.carolhayesmanagement.co.uk](http://www.carolhayesmanagement.co.uk)



**Melanie Hoppe**  
Editorial



**CAROLHAYES  
MANAGEMENT**  
CREATIVE ARTIST & STYLE MANAGEMENT

020 7482 1555  
[www.carolhayesmanagement.co.uk](http://www.carolhayesmanagement.co.uk)



Melanie Hoppe  
Editorial

**CAROLHAYES  
MANAGEMENT**  
CREATIVE ARTIST & STYLE MANAGEMENT

020 7482 1555  
[www.carolhayesmanagement.co.uk](http://www.carolhayesmanagement.co.uk)



**Melanie Hoppe**  
Editorial

**CAROLHAYES  
MANAGEMENT**  
CREATIVE ARTIST & STYLE MANAGEMENT

020 7482 1555  
[www.carolhayesmanagement.co.uk](http://www.carolhayesmanagement.co.uk)