

# Michelle Kelly

Stylists | Stylists - Womens

Advertising





**Michelle Kelly**  
Stylists | Stylists - Womens  
Advertising



**CAROLHAYES  
MANAGEMENT**  
CREATIVE ARTIST & STYLE MANAGEMENT

020 7482 1555  
[www.carolhayesmanagement.co.uk](http://www.carolhayesmanagement.co.uk)



**Michelle Kelly**

Stylists | Stylists - Womens  
Advertising

**CAROLHAYES  
MANAGEMENT**  
CREATIVE ARTIST & STYLE MANAGEMENT

020 7482 1555  
[www.carolhayesmanagement.co.uk](http://www.carolhayesmanagement.co.uk)

TIMELISS

FINNIES THE JEWELLER

FINNIES THE JEWELLER

TIMELISS

PHOTOGRAPHY  
SIGNALY SEASIDE  
STYLING  
MICHELLE KELLY

# COCKTAIL HOUR

LONDON NIGHT, PARTY IN THE CITY. BRING ON THE PEACOCK DRESSED TO THRILL! BEAUTY REFLECTED IN FINE DIAMONDS, EMERALDS, SAPPHIRES, PLATINUM AND GOLD. HIGH JEWELLERY, SENDING OUT SHARDS OF LIGHT AND CAUSING HEADS TO TURN, TRANSFORMS AN ORDINARY NIGHT INTO AN EXTRAORDINARY ONE

**Michelle Kelly**  
Stylists | Stylists - Womens  
Advertising

**CAROLHAYES  
MANAGEMENT**  
CREATIVE ARTIST & STYLE MANAGEMENT

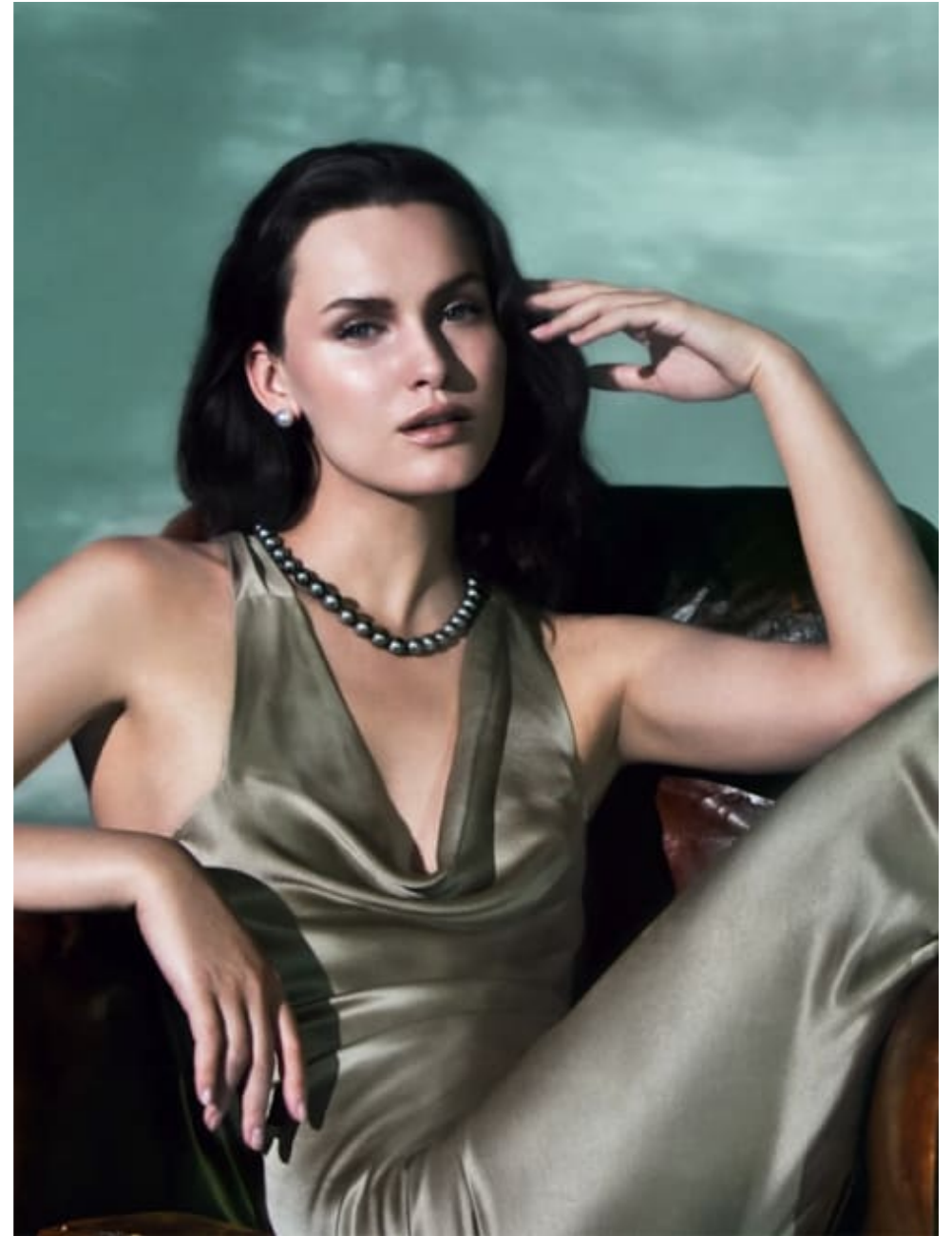
020 7482 1555  
[www.carolhayesmanagement.co.uk](http://www.carolhayesmanagement.co.uk)



**Michelle Kelly**  
Stylists | Stylists - Womens  
Advertising

**CAROLHAYES  
MANAGEMENT**  
CREATIVE ARTIST & STYLE MANAGEMENT

020 7482 1555  
[www.carolhayesmanagement.co.uk](http://www.carolhayesmanagement.co.uk)



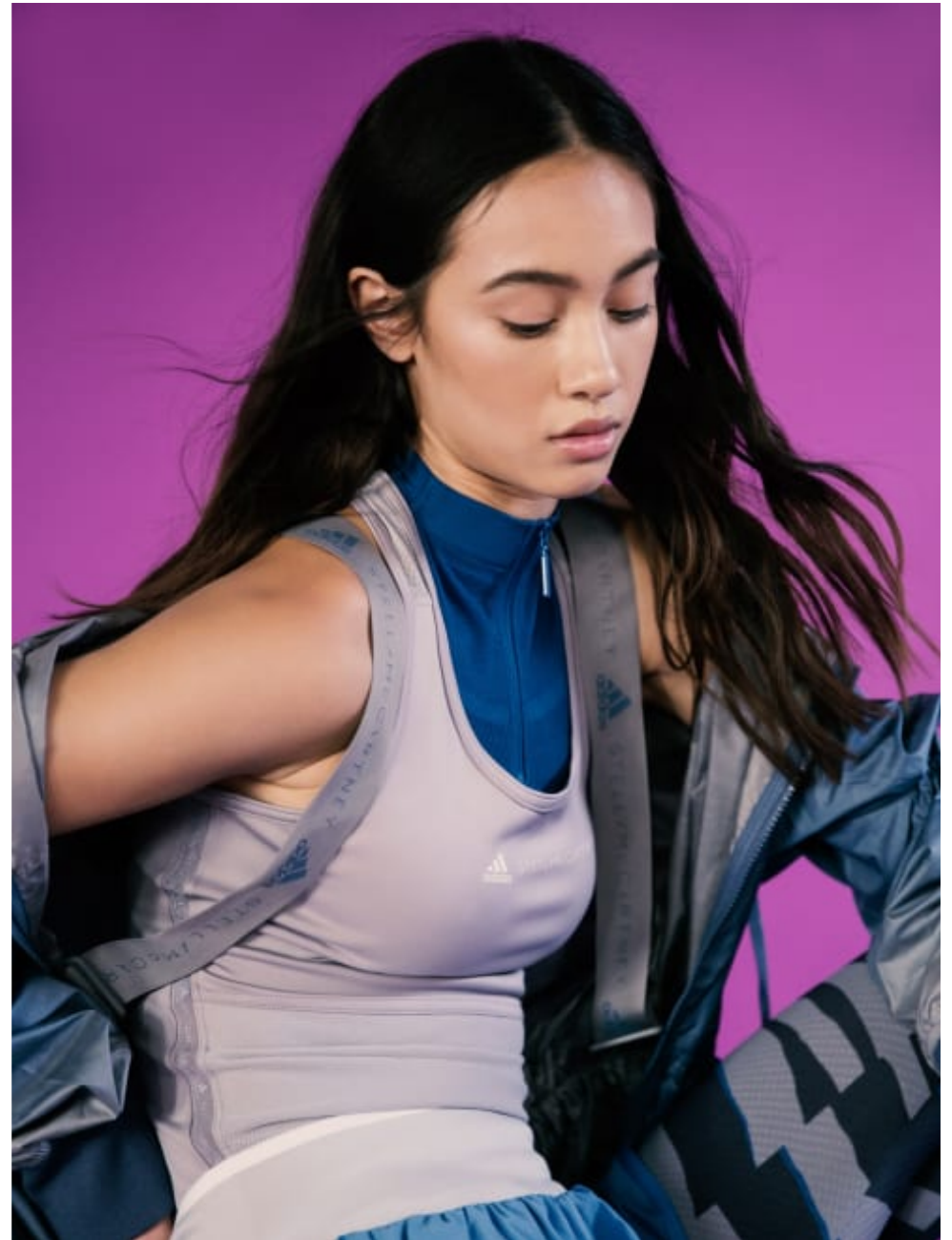
**Michelle Kelly**  
Stylists | Stylists - Womens  
Advertising

**CAROLHAYES  
MANAGEMENT**  
CREATIVE ARTIST & STYLE MANAGEMENT

020 7482 1555  
[www.carolhayesmanagement.co.uk](http://www.carolhayesmanagement.co.uk)

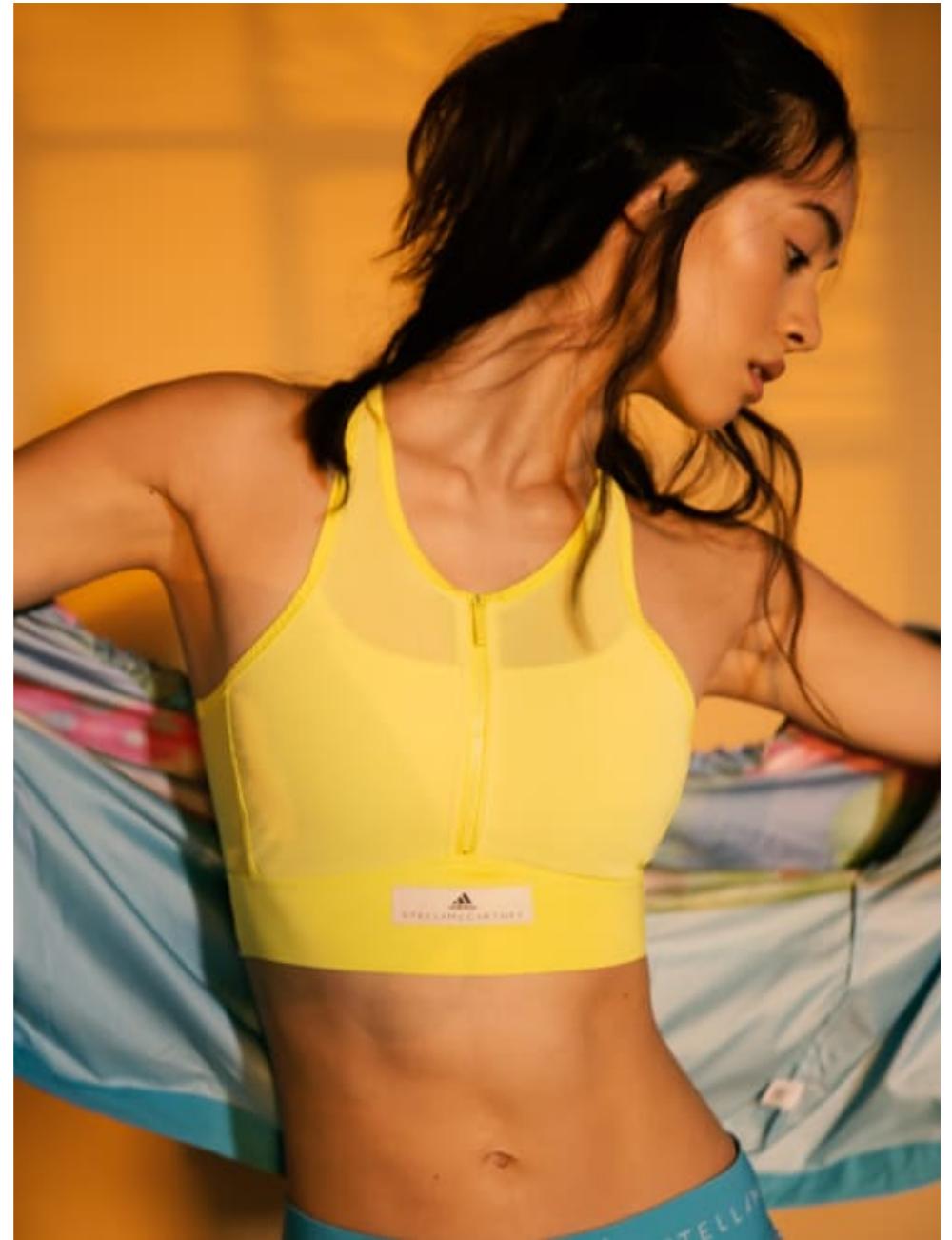


**Michelle Kelly**  
Stylists | Stylists - Womens  
Advertising



**CAROLHAYES  
MANAGEMENT**  
CREATIVE ARTIST & STYLE MANAGEMENT

020 7482 1555  
[www.carolhayesmanagement.co.uk](http://www.carolhayesmanagement.co.uk)



**Michelle Kelly**  
Stylists | Stylists - Womens  
Advertising

**CAROLHAYES  
MANAGEMENT**  
CREATIVE ARTIST & STYLE MANAGEMENT

020 7482 1555  
[www.carolhayesmanagement.co.uk](http://www.carolhayesmanagement.co.uk)



**Michelle Kelly**

Stylists | Stylists - Womens  
Advertising

**CAROLHAYES  
MANAGEMENT**  
CREATIVE ARTIST & STYLE MANAGEMENT

020 7482 1555  
[www.carolhayesmanagement.co.uk](http://www.carolhayesmanagement.co.uk)



**Michelle Kelly**  
Stylists | Stylists - Womens  
Advertising

**CAROLHAYES  
MANAGEMENT**  
CREATIVE ARTIST & STYLE MANAGEMENT

020 7482 1555  
[www.carolhayesmanagement.co.uk](http://www.carolhayesmanagement.co.uk)



**Michelle Kelly**  
Stylists | Stylists - Womens  
Advertising

**CAROLHAYES  
MANAGEMENT**  
CREATIVE ARTIST & STYLE MANAGEMENT

020 7482 1555  
[www.carolhayesmanagement.co.uk](http://www.carolhayesmanagement.co.uk)



**Michelle Kelly**  
Stylists | Stylists - Womens  
Advertising

**CAROLHAYES  
MANAGEMENT**  
CREATIVE ARTIST & STYLE MANAGEMENT

020 7482 1555  
[www.carolhayesmanagement.co.uk](http://www.carolhayesmanagement.co.uk)



**Michelle Kelly**  
Stylists | Stylists - Womens  
Advertising



**CAROLHAYES  
MANAGEMENT**  
CREATIVE ARTIST & STYLE MANAGEMENT

020 7482 1555  
[www.carolhayesmanagement.co.uk](http://www.carolhayesmanagement.co.uk)



TATLER • PROMOTION

**SYBARITE**

From top: Liberty black onyx ring set in 18-carat white gold, featuring white diamonds (3.68 carats) and a 10mm white pearl, £18,000. Gate bracelet set in 18-carat white gold, featuring white diamonds (6.71 carats). Price on application. Dancing Doll ring set in 18-carat white gold, featuring white diamonds (5.24 carats), 2 pear-shape diamonds (0.34 carats each), emeralds (2.95 carats), 4 pear-shape emeralds (0.7 carats each) and 3mm pearl. Price on application.

44 Basil Street  
 (tel: 020 3402 5050;  
 sybaritejewellery.com)

PHOTOGRAPH BY ANDREW ANNEAL. STYLING: PAUL DUNN AT HUNTERDOUGLAS



TATLER • PROMOTION

**BUCCELLATI**

From left: Camelia Nefertiti white-gold hand-engraved watch cuff with diamonds. Cleopatra yellow-gold hand-engraved watch cuff with diamonds. Cocktail ring handcrafted in white and yellow gold with white and yellow diamonds, featuring a center aquamarine (22.60 carats). Cocktail ring handcrafted in white gold with diamonds and tourmalines, featuring a centre sapphire (31.38 carats). Prices on application.

33 Albemarle Street, Mayfair  
 (tel: 020 7820 3000;  
 buccellati.com)

HAIR: THE PINK HENRIER AT ANASTAS ANASTAS. MAKEUP: MICHÈLE BOUTTE

**Michelle Kelly**  
 Stylists | Stylists - Womens  
 Advertising

**CAROLHAYES  
 MANAGEMENT**  
 CREATIVE ARTIST & STYLE MANAGEMENT

020 7482 1555  
 www.carolhayesmanagement.co.uk



**BOVET TIMEPIECES**  
 From left: Amadeo® Fleuret 36 Miss Audrey in light purple and in turquoise with Amadeo convertible stainless steel case, set with diamonds (can be converted to a table clock or worn as a necklace pendant), featuring guilloché bicolor dial and diamond-plated silver chain (76 cm). A selection of Julia rings in white gold and in pink gold, set with diamonds, pink sapphires and Paraíba tourmalines. Prices on application.

Adler, 13 New Bond Street  
 (tel: 020 7409 2222; adlerich and bovet.com)

© 2011 THE JACK RUSSELL BLUE PRESS



**CHATILA**  
 From top: diamond cluster bangle, set with diamonds (31.21 carats), Sapphire (21 carats) and diamond ring. Diamond eternity ring, set with 15 emerald-cut diamonds (10.86 carats), bracelet featuring sapphires (24.79 carats) and diamonds (88.39 carats). Prices on application.

22 Old Bond Street  
 (tel: 020 7403 9823; chatila.com)

GEOFFREY THE MINIATURE LONGHAIRED DACHSHUND. DRESSES BY SOPHIA KAHN. LIBERTY ORIENT FOODS. MADE TO ORDER BY LOVEINTOONS.CO.UK

**Michelle Kelly**  
 Stylists | Stylists - Womens  
 Advertising

**CAROL HAYES  
 MANAGEMENT**  
 CREATIVE ARTIST & STYLE MANAGEMENT

020 7482 1555  
 www.carolhayesmanagement.co.uk



**Michelle Kelly**  
Stylists | Stylists - Womens  
Advertising

**CAROLHAYES  
MANAGEMENT**  
CREATIVE ARTIST & STYLE MANAGEMENT

020 7482 1555  
[www.carolhayesmanagement.co.uk](http://www.carolhayesmanagement.co.uk)



GANJAM.  
Heighten your senses

**Michelle Kelly**  
Stylists | Stylists - Womens  
Advertising

**CAROLHAYES  
MANAGEMENT**  
CREATIVE ARTIST & STYLE MANAGEMENT

020 7482 1555  
[www.carolhayesmanagement.co.uk](http://www.carolhayesmanagement.co.uk)



**Michelle Kelly**  
Stylists | Stylists - Womens  
Advertising



**CAROLHAYES  
MANAGEMENT**  
CREATIVE ARTIST & STYLE MANAGEMENT

020 7482 1555  
[www.carolhayesmanagement.co.uk](http://www.carolhayesmanagement.co.uk)



**Michelle Kelly**  
Stylists | Stylists - Womens  
Advertising

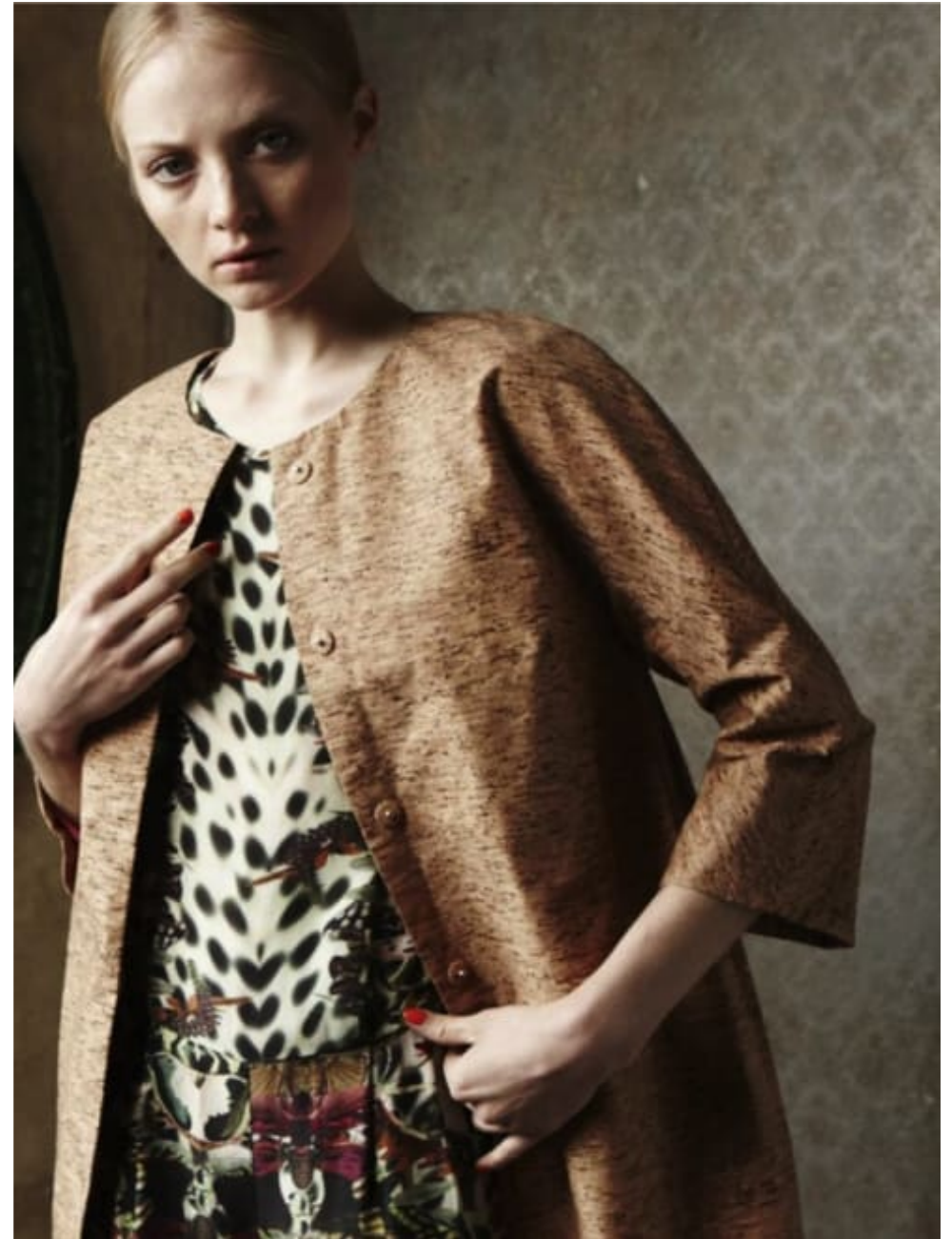


**CAROLHAYES  
MANAGEMENT**  
CREATIVE ARTIST & STYLE MANAGEMENT

020 7482 1555  
[www.carolhayesmanagement.co.uk](http://www.carolhayesmanagement.co.uk)



**Michelle Kelly**  
Stylists | Stylists - Womens  
Advertising



**CAROLHAYES  
MANAGEMENT**  
CREATIVE ARTIST & STYLE MANAGEMENT

020 7482 1555  
[www.carolhayesmanagement.co.uk](http://www.carolhayesmanagement.co.uk)



**Michelle Kelly**  
Stylists | Stylists - Womens  
Advertising



**CAROLHAYES  
MANAGEMENT**  
CREATIVE ARTIST & STYLE MANAGEMENT

020 7482 1555  
[www.carolhayesmanagement.co.uk](http://www.carolhayesmanagement.co.uk)



**Michelle Kelly**  
Stylists | Stylists - Womens  
Advertising



**CAROLHAYES  
MANAGEMENT**  
CREATIVE ARTIST & STYLE MANAGEMENT

020 7482 1555  
[www.carolhayesmanagement.co.uk](http://www.carolhayesmanagement.co.uk)



**Michelle Kelly**

Stylists | Stylists - Womens  
Advertising

**CAROLHAYES  
MANAGEMENT**  
CREATIVE ARTIST & STYLE MANAGEMENT

020 7482 1555

[www.carolhayesmanagement.co.uk](http://www.carolhayesmanagement.co.uk)



**Michelle Kelly**  
Stylists | Stylists - Womens  
Advertising

**CAROLHAYES  
MANAGEMENT**  
CREATIVE ARTIST & STYLE MANAGEMENT

020 7482 1555  
[www.carolhayesmanagement.co.uk](http://www.carolhayesmanagement.co.uk)



**Michelle Kelly**

Stylists | Stylists - Womens  
Advertising

**CAROLHAYES  
MANAGEMENT**  
CREATIVE ARTIST & STYLE MANAGEMENT

020 7482 1555

[www.carolhayesmanagement.co.uk](http://www.carolhayesmanagement.co.uk)



**Michelle Kelly**

Stylists | Stylists - Womens  
Advertising

**CAROLHAYES  
MANAGEMENT**  
CREATIVE ARTIST & STYLE MANAGEMENT

020 7482 1555

[www.carolhayesmanagement.co.uk](http://www.carolhayesmanagement.co.uk)



**Michelle Kelly**

Stylists | Stylists - Womens  
Advertising

**CAROLHAYES  
MANAGEMENT**  
CREATIVE ARTIST & STYLE MANAGEMENT

020 7482 1555

[www.carolhayesmanagement.co.uk](http://www.carolhayesmanagement.co.uk)



**Michelle Kelly**  
Stylists | Stylists - Womens  
Advertising



**CAROLHAYES  
MANAGEMENT**  
CREATIVE ARTIST & STYLE MANAGEMENT

020 7482 1555  
[www.carolhayesmanagement.co.uk](http://www.carolhayesmanagement.co.uk)



**Michelle Kelly**  
Stylists | Stylists - Womens  
Advertising

**CAROLHAYES  
MANAGEMENT**  
CREATIVE ARTIST & STYLE MANAGEMENT

020 7482 1555  
[www.carolhayesmanagement.co.uk](http://www.carolhayesmanagement.co.uk)



**Michelle Kelly**

Stylists | Stylists - Womens  
Advertising

**CAROLHAYES  
MANAGEMENT**  
CREATIVE ARTIST & STYLE MANAGEMENT

020 7482 1555

[www.carolhayesmanagement.co.uk](http://www.carolhayesmanagement.co.uk)



**Michelle Kelly**

Stylists | Stylists - Womens  
Advertising

**CAROLHAYES  
MANAGEMENT**  
CREATIVE ARTIST & STYLE MANAGEMENT

020 7482 1555

[www.carolhayesmanagement.co.uk](http://www.carolhayesmanagement.co.uk)



**Michelle Kelly**

Stylists | Stylists - Womens  
Advertising

**CAROLHAYES  
MANAGEMENT**  
CREATIVE ARTIST & STYLE MANAGEMENT

020 7482 1555

[www.carolhayesmanagement.co.uk](http://www.carolhayesmanagement.co.uk)



**Michelle Kelly**  
Stylists | Stylists - Womens  
Advertising

**CAROLHAYES  
MANAGEMENT**  
CREATIVE ARTIST & STYLE MANAGEMENT

020 7482 1555  
[www.carolhayesmanagement.co.uk](http://www.carolhayesmanagement.co.uk)



**Michelle Kelly**

Stylists | Stylists - Womens  
Advertising

**CAROLHAYES  
MANAGEMENT**  
CREATIVE ARTIST & STYLE MANAGEMENT

020 7482 1555

[www.carolhayesmanagement.co.uk](http://www.carolhayesmanagement.co.uk)



**Michelle Kelly**

Stylists | Stylists - Womens  
Advertising

**CAROLHAYES  
MANAGEMENT**  
CREATIVE ARTIST & STYLE MANAGEMENT

020 7482 1555

[www.carolhayesmanagement.co.uk](http://www.carolhayesmanagement.co.uk)

sheer+  
invisible

dry shampoo

NEW YORK

fruity  
fragrance



Michelle Kelly

Stylists | Stylists - Womens  
Advertising

CAROLHAYES  
MANAGEMENT  
CREATIVE ARTIST & STYLE MANAGEMENT

020 7482 1555

[www.carolhayesmanagement.co.uk](http://www.carolhayesmanagement.co.uk)

IMAGES : RICHARD GRASSIE // STYLING : MICHELLE KELLY

## URBAN SAFARI

*Bentley's awe-inspiring Bentayga is as fiercely capable off-road as it is fierce on the fashion-forward streets of east London. Svelte and taut, with an imposing stance, its crisply sculpted bodywork nevertheless packs a sensational 600-horsepower punch, putting the "sport" well and truly into "SUV"*



**Michelle Kelly**

Stylists | Stylists - Womens  
Advertising

**CAROLHAYES  
MANAGEMENT**  
CREATIVE ARTIST & STYLE MANAGEMENT

020 7482 1555

[www.carolhayesmanagement.co.uk](http://www.carolhayesmanagement.co.uk)

TATLER • PROMOTION

# All I need is Dr Sebagh



SUPREME MAINTENANCE  
YOUTH SERUM,  
£215.00 FOR 60ML  
DRSEBAGH.COM

*Photographed by*  
**MATTHEW SHAVE**

ART DIRECTION BY GAVIN SHAW &  
SAMANTHA BROWNSTEN

STYLIST: MICHELLE KELLY AT CAROL HAYES MANAGEMENT.  
MAKE-UP: JAMIE THOMAS AT FRANK SHERIDY.  
HAIR: JACK MERRICK-TRELUWY/NALES JULIE LEE, BOTH ELLE  
MANAGEMENT. LOCATION: JAMESA.COM  
DRESS: BONENRIDER/LOO.UK

**Michelle Kelly**  
Stylists | Stylists - Womens  
Advertising

**CAROL HAYES  
MANAGEMENT**  
CREATIVE ARTIST & STYLE MANAGEMENT

020 7482 1555  
www.carolhayesmanagement.co.uk