

Miha Oshima

Editorial



Тут на аэродроме жанры да. Платье из хлопка, мехосердья из металла и смолы, массивные из металла и стальные сумки из кожи, все — DOP.



ELLE.RU

151

Miha Oshima
Editorial



Жилет и юбка из хлопка, платки из кожи, серьги из металла и кристаллов, твара из металла и стекла, кольца и браслет из металла, кольцо на правой руке из металла и смолы, сумки из кожи, все — DOP.

146

ELLE.RU

CAROLHAYES
MANAGEMENT
CREATIVE ARTIST & STYLE MANAGEMENT

020 7482 1555
www.carolhayesmanagement.co.uk

Жакет, топ и шорты из клеточного жаккарда, блуза из хлопка, ботинки из кожи, пальто из хлопка, моносорты и твид из металла и стекла, моносорты и носки из металла и смолы, все — D&B.
На странице слева: блуза из хлопка, D&B



Miha Oshima
Editorial

**CAROLHAYES
MANAGEMENT**
CREATIVE ARTIST & STYLE MANAGEMENT

020 7482 1555
www.carolhayesmanagement.co.uk



Miha Oshima
Editorial

CAROLHAYES
MANAGEMENT
CREATIVE ARTIST & STYLE MANAGEMENT

020 7482 1555
www.carolhayesmanagement.co.uk



Miha Oshima
Editorial



**CAROLHAYES
MANAGEMENT**
CREATIVE ARTIST & STYLE MANAGEMENT

020 7482 1555
www.carolhayesmanagement.co.uk



Miha Oshima
Editorial

CAROLHAYES
MANAGEMENT
CREATIVE ARTIST & STYLE MANAGEMENT

020 7482 1555
www.carolhayesmanagement.co.uk

Ashley Smith nous a conquis, sa fraîcheur nous enivre, c'est une fille libre, naturelle, épanouie. Avec sa petite taille, son parcours un peu atypique, Ashley ne rentre pas dans le moule des reines de podiums, pour la plupart interchangeables. Une vraie personnalité, une vraie humeur, bref, un tempérament. Sans reproduire des clichés de bomba latina, elle affiche une silhouette curvy absolument vertigineuse. Une féminité retrouvée, cela tombe bien. C'est très trendy et diaboliquement Diesel !

Rock, cinéma, théâtre, Ashley Smith ne voit pas la vie par le prisme étroit de la mode. La Lifestyle attitude, c'est tout un art. Qu'elle vit avec insouciance... et talent.



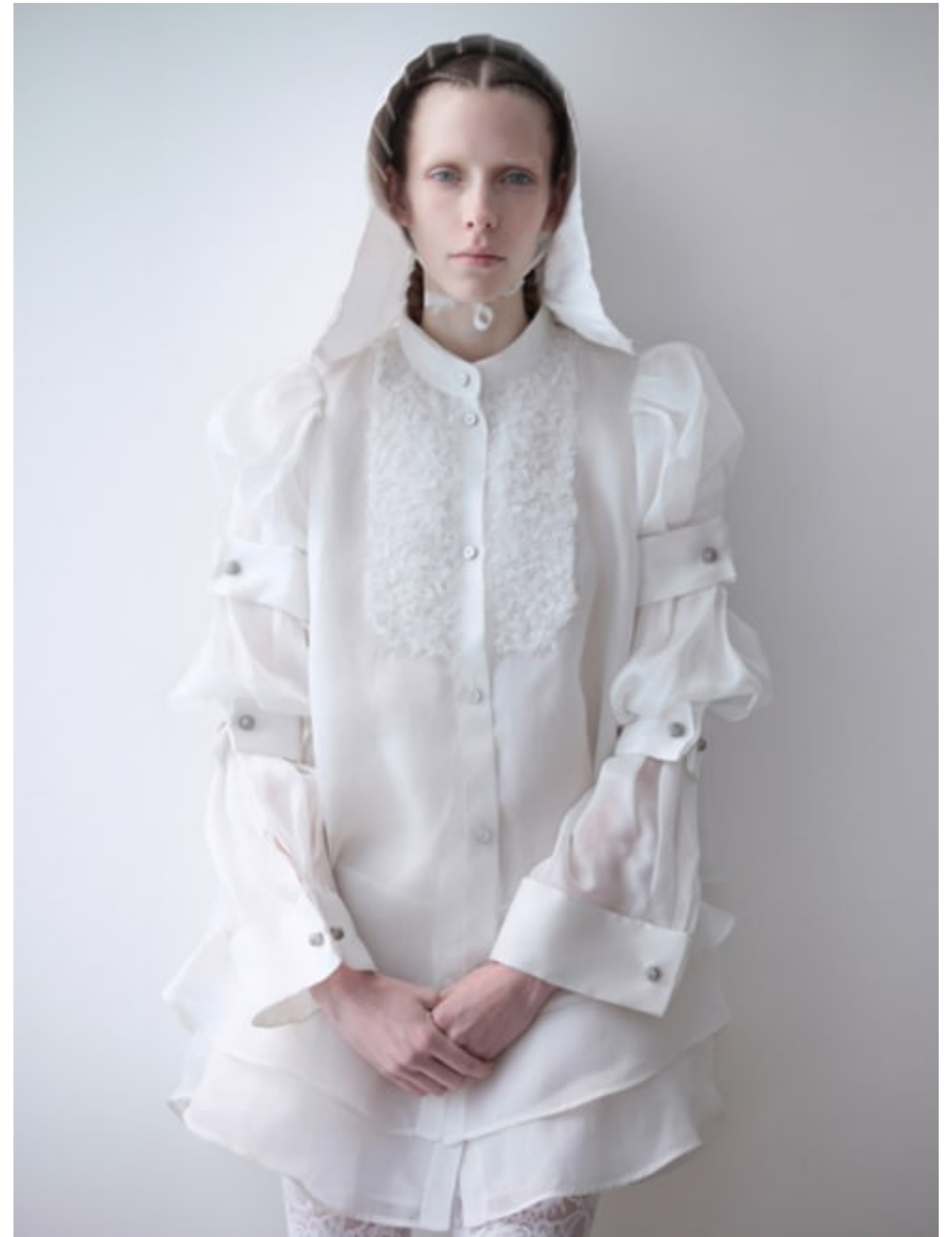


« AMSTERDAM, PENNSYLVANIA »

PHOTOGRAPHER / ANNE COMBAZ
FASHION EDITOR / LAURENT DOMEROWICZ



Miha Oshima
Editorial



**CAROLHAYES
MANAGEMENT**
CREATIVE ARTIST & STYLE MANAGEMENT

020 7482 1555
www.carolhayesmanagement.co.uk



Miha Oshima
Editorial



**CAROLHAYES
MANAGEMENT**
CREATIVE ARTIST & STYLE MANAGEMENT

020 7482 1555
www.carolhayesmanagement.co.uk



Miha Oshima
Editorial

CAROLHAYES
MANAGEMENT
CREATIVE ARTIST & STYLE MANAGEMENT

020 7482 1555
www.carolhayesmanagement.co.uk

Miha Oshima
Editorial

CAROLHAYES
MANAGEMENT
CREATIVE ARTIST & STYLE MANAGEMENT

020 7482 1555
www.carolhayesmanagement.co.uk

BAZAAR

BEAUTY



ENERJİ YÜKSELİŞİ

Yeni sezonda renklerin yüksek enerjisinden ilham alıyor ve dekoltenin modadaki yeni algısını inceliyoruz.

Hazırlayan Pelin Haşcahık
Fotoğraf Laurence Laborie
Makyaj Giulia Carini

MERCAN VURGU

Bu sayfalarla görümlümü yaratan makyaj sanatçısı Giulia Carini, ilahın öne çıktığı bu look için doğal ve saflıkta görünmeye yardımcı olan yeftali tonlarını tercih ediyor; "Yaza yakışan sıcak yeftali ve mercan tonları, elmasak kemiklerini pekilendirmek ve renklendirmek için ideal. Bu görünümde Becca Luminous Snapdragon alıncı kullanarak yanaktan odak noktası haline getirdim." Ceket, Jitrois Küpeler, Laliçue

Beauty BAZAAR

GIZLI IŞIK

Eğer renkli alıncak size göre değışik, elmasak kemikleri dolgun göstermek ve hafif bir ışık katmak adına aydınlatıcılardan yararlanabilişiniz. Giulia Carini'nin bu koreyalaki seviyesi altın rengi arınlatan kayış seriklerle karışık olgusunuş yanaklarla yuvafak bir illüzyon yaratmak. Highlighter, Becca Shimmering Skin Perfector Pressed Champagne Pop Bluz, Carven



NUDE ETKİ

Güliz

Carini, nude rujlar için öncelikle dudaklardaki ölü derilerden kurtulmak gerektiğini söylüyor ve şöyle diyor: "Ardından dudaklarınıza nemlendirmek için balm kullanın ve dudak çevresindeki insanlık için fondöten ile kapatın. Doğal sonuç elde etmek için dudak kalemi kullanmayın ve ruju parmak uçlarınızla uygulayın." Ruj, Charlotte Tilbury Kissing Hepburn Honey Ceket ve İsmet, Paula Ka Kolye, Clara Jasmine





Miha Oshima
Editorial

**CAROLHAYES
MANAGEMENT**
CREATIVE ARTIST & STYLE MANAGEMENT

020 7482 1555
www.carolhayesmanagement.co.uk



Miha Oshima
Editorial

**CAROLHAYES
MANAGEMENT**
CREATIVE ARTIST & STYLE MANAGEMENT

020 7482 1555
www.carolhayesmanagement.co.uk



Miha Oshima
Editorial

**CAROLHAYES
MANAGEMENT**
CREATIVE ARTIST & STYLE MANAGEMENT

020 7482 1555
www.carolhayesmanagement.co.uk



Miha Oshima
Editorial

**CAROLHAYES
MANAGEMENT**
CREATIVE ARTIST & STYLE MANAGEMENT

020 7482 1555
www.carolhayesmanagement.co.uk



Miha Oshima
Editorial



**CAROLHAYES
MANAGEMENT**
CREATIVE ARTIST & STYLE MANAGEMENT

020 7482 1555
www.carolhayesmanagement.co.uk



Miha Oshima
Editorial

**CAROLHAYES
MANAGEMENT**
CREATIVE ARTIST & STYLE MANAGEMENT



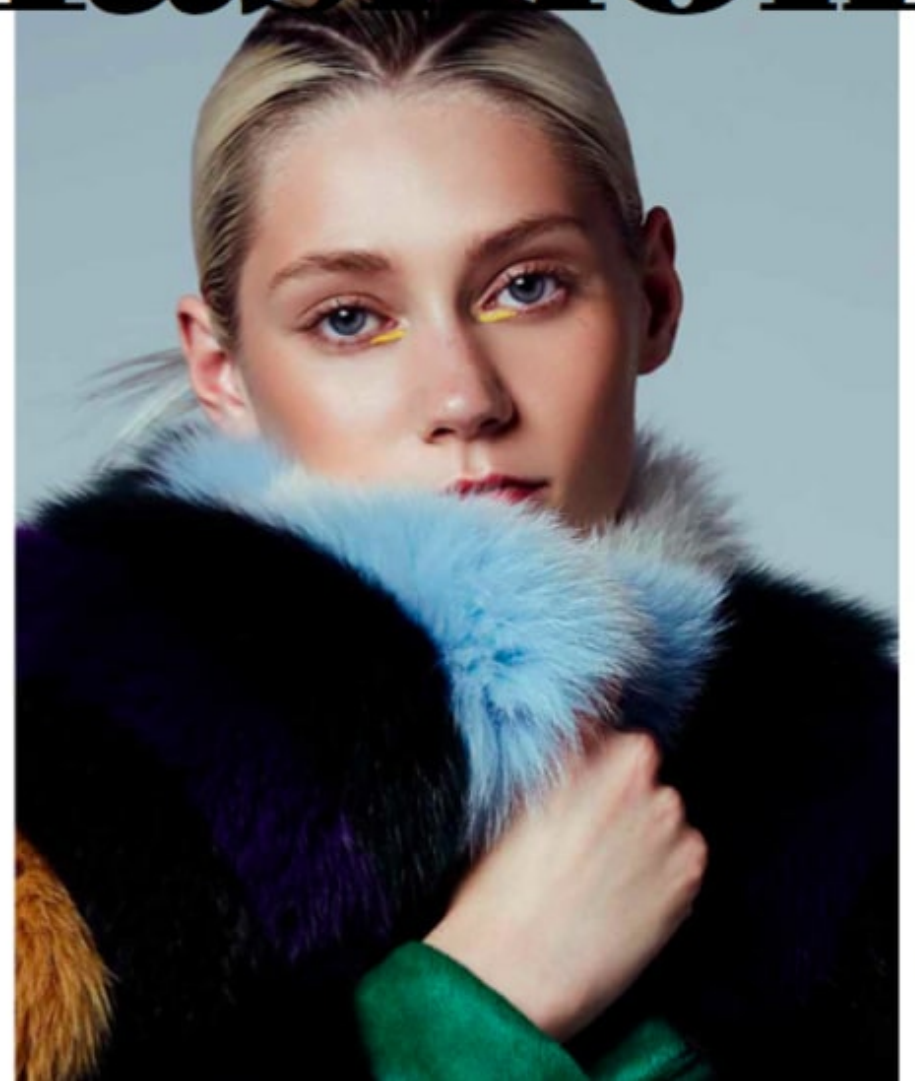
—p.69
Coat: Mr. Porter
Pants: Fatima Lopes
Leather bow tie:
Tania Zakkout—

—p.70
Halter 's' leather jacket:
Clarisse Hiersa—

—p.71
Jacket: Fatima Lopes
See-through top: stylist own
Embroidered pants:
Oscar Casella
Shoes: Muzette—

R

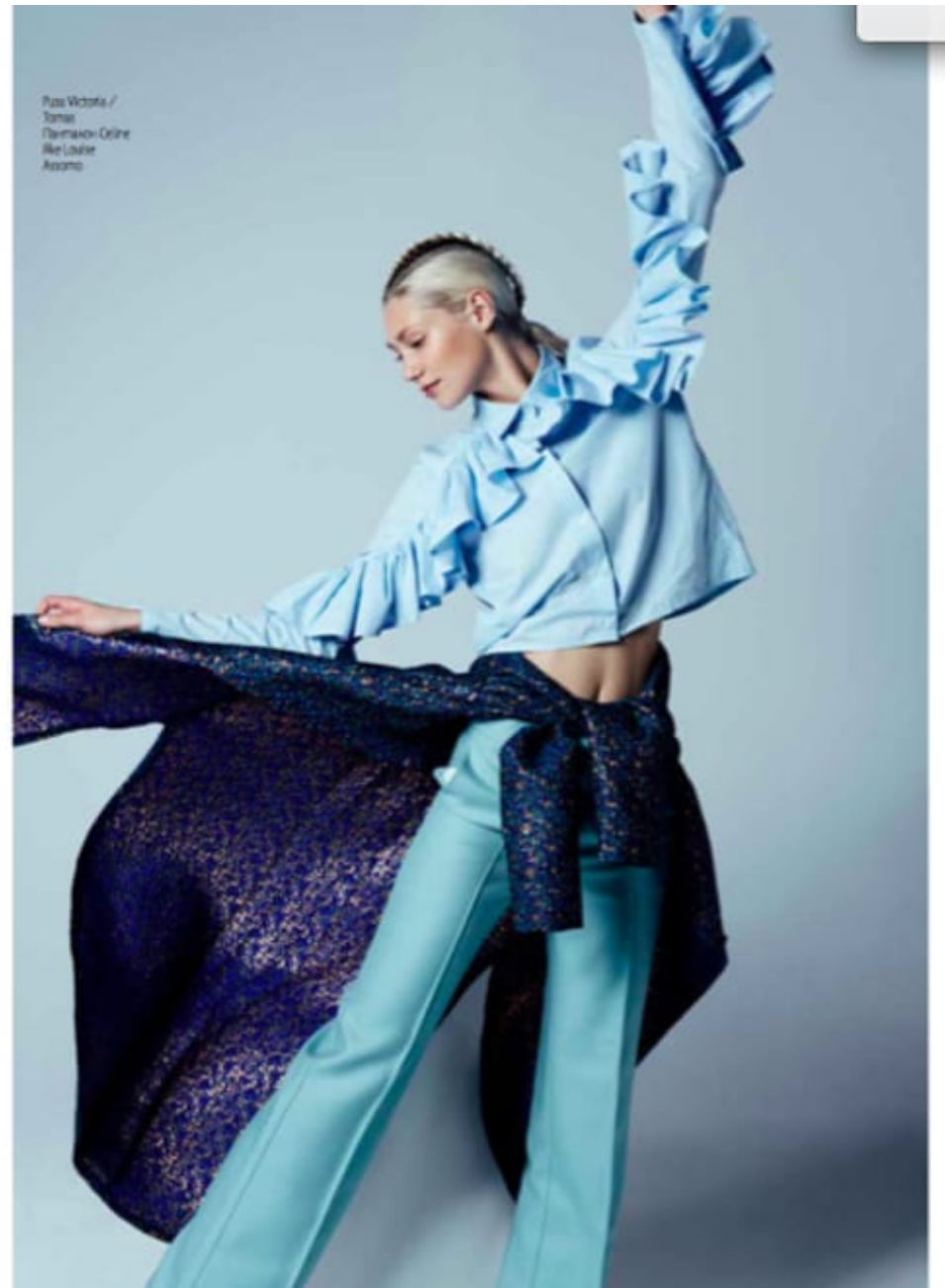
ELLE
fashion



Miha Oshima
Editorial

**CAROLHAYES
MANAGEMENT**
CREATIVE ARTIST & STYLE MANAGEMENT

020 7482 1555
www.carolhayesmanagement.co.uk





Miha Oshima
Editorial

**CAROLHAYES
MANAGEMENT**
CREATIVE ARTIST & STYLE MANAGEMENT

020 7482 1555
www.carolhayesmanagement.co.uk



Miha Oshima
Editorial



**CAROLHAYES
MANAGEMENT**
CREATIVE ARTIST & STYLE MANAGEMENT

020 7482 1555
www.carolhayesmanagement.co.uk



Miha Oshima
Editorial

**CAROLHAYES
MANAGEMENT**
CREATIVE ARTIST & STYLE MANAGEMENT

020 7482 1555
www.carolhayesmanagement.co.uk



Miha Oshima
Editorial

**CAROLHAYES
MANAGEMENT**
CREATIVE ARTIST & STYLE MANAGEMENT

020 7482 1555
www.carolhayesmanagement.co.uk



Miha Oshima
Editorial

**CAROLHAYES
MANAGEMENT**
CREATIVE ARTIST & STYLE MANAGEMENT

020 7482 1555
www.carolhayesmanagement.co.uk



Miha Oshima
Editorial

**CAROLHAYES
MANAGEMENT**
CREATIVE ARTIST & STYLE MANAGEMENT



020 7482 1555
www.carolhayesmanagement.co.uk



Serre-tête (Demot Missolini)
Lunettes (Thierry Levy)
Cardigan (Fil Chachou)

Rétro beach

De nettes influences fifties, des couleurs contemporaines et une bonne dose de glamour : tous les ingrédients pour une virée à la plage réussie.

Photos Michelle Du Xuan
assistée de Staphy Pilm Saleb pour IDEAT



Echarpe (Olympia Le Tan)
Cardigan (Fil Chachou)



Miha Oshima
Editorial

**CAROLHAYES
MANAGEMENT**
CREATIVE ARTIST & STYLE MANAGEMENT

020 7482 1555
www.carolhayesmanagement.co.uk

FASHION

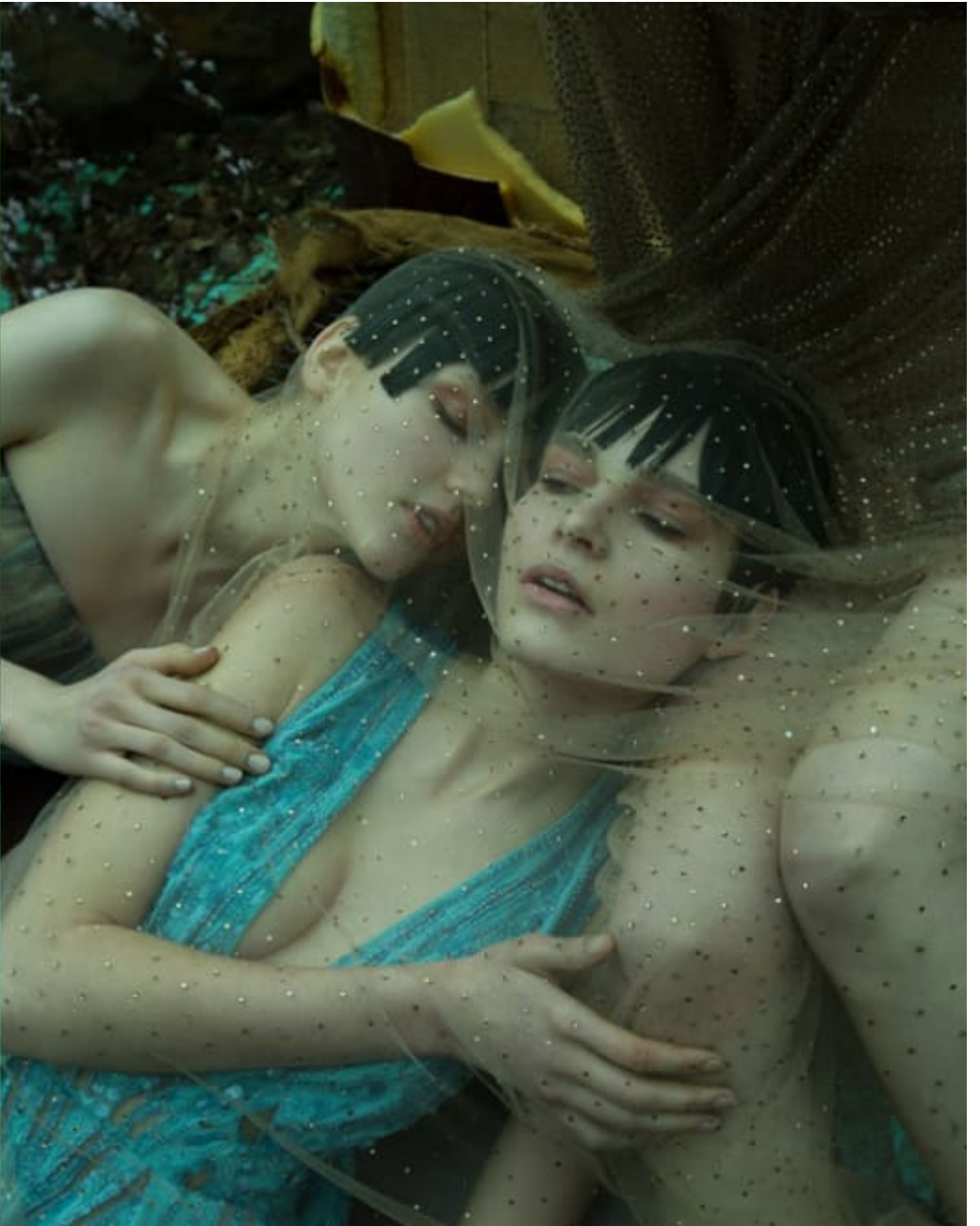
SURREAL SENSE

STEP HALFWAY INTO A DREAM FOR A GLIMPSE
OF OTHERWORLDLY BEAUTY

PHOTOS: MICHELLE DU XUAN
MODELS: LUBA @ ELITE PARIS, BARBORA UHRDOVA @ WOMEN PARIS,
CLARA JAFFRE ZIC @ SUPREME PARIS, INGRID @ FORD PARIS
STYLIST: TANIA RAT-PATRON
SET DESIGNER: KADURI ELYASHAR
MAKE-UP: REGINA TORNWALL
HAIR: MIHA OSHIMA
ASSISTANT: JOFFREY MONTES
SPECIAL THANKS TO HOTEL CHINAGORA PARIS
NOTE: ALL PRICES WERE CONVERTED FROM EUROS

LEFT
ROBERTO
Flare silk dress, 11655,000
EMANUELE UNGARO
High-heeled sandals, 11036,400

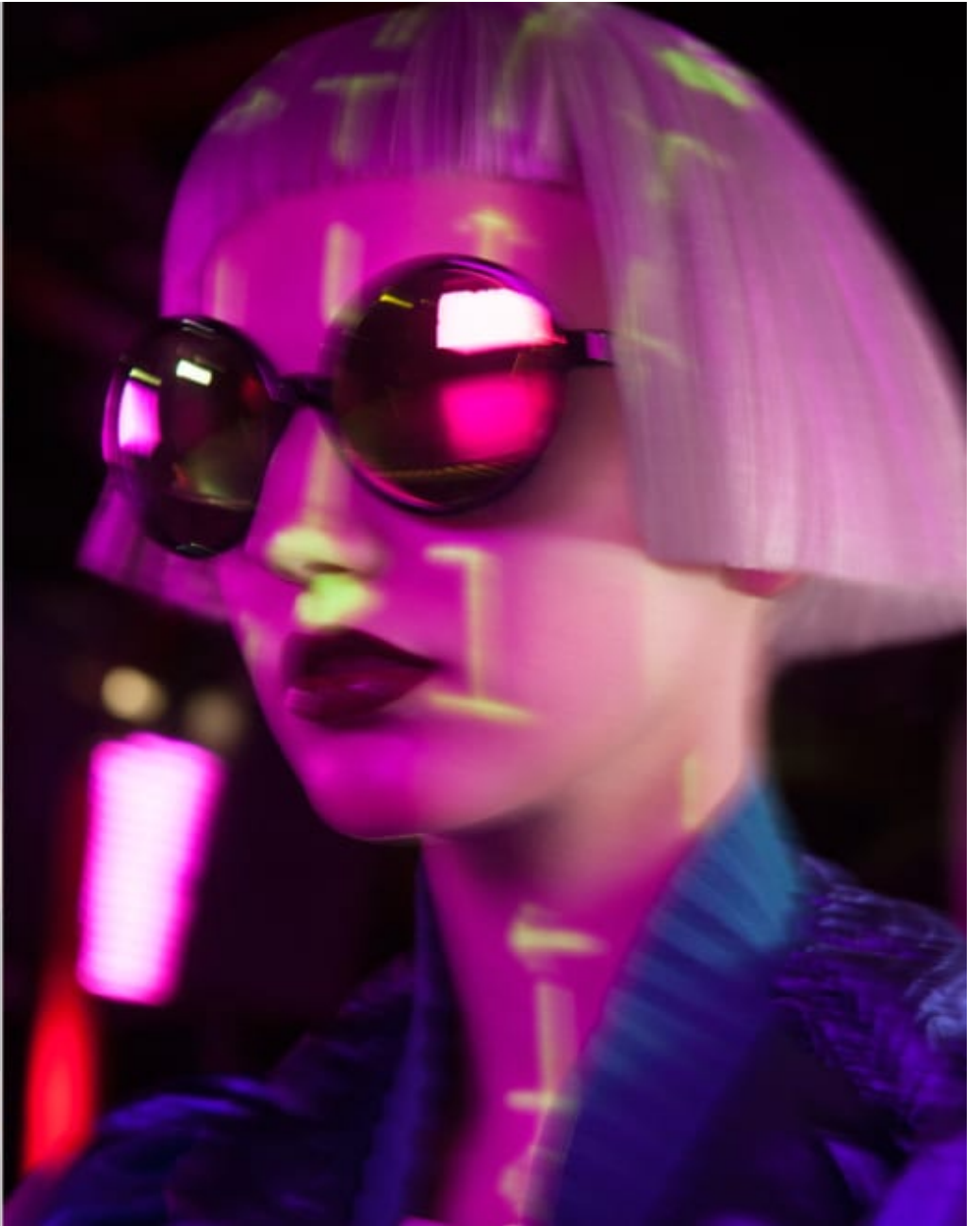
RIGHT
SIMONE ROSHA
Flare silk underdress, Price on request
ELIZABETH
Embroidered half dress, about 110240,00
RILEY RAAR
Metallic high-heeled sandals, 11036,000



Miha Oshima
Editorial

CAROLHAYES
MANAGEMENT
CREATIVE ARTIST & STYLE MANAGEMENT

020 7482 1555
www.carolhayesmanagement.co.uk



Miha Oshima
Editorial

CAROLHAYES
MANAGEMENT
CREATIVE ARTIST & STYLE MANAGEMENT

020 7482 1555
www.carolhayesmanagement.co.uk



Miha Oshima
Editorial

**CAROLHAYES
MANAGEMENT**
CREATIVE ARTIST & STYLE MANAGEMENT

020 7482 1555
www.carolhayesmanagement.co.uk



Miha Oshima
Editorial



**CAROLHAYES
MANAGEMENT**
CREATIVE ARTIST & STYLE MANAGEMENT

020 7482 1555
www.carolhayesmanagement.co.uk



Miha Oshima
Editorial

**CAROLHAYES
MANAGEMENT**
CREATIVE ARTIST & STYLE MANAGEMENT

020 7482 1555
www.carolhayesmanagement.co.uk



上: Victor & Rolf Haute Couture
下: Taolo Munkh



设计师 Atelier Versace
化妆 Pierre Hardy

Miha Oshima
Editorial

**CAROLHAYES
MANAGEMENT**
CREATIVE ARTIST & STYLE MANAGEMENT

020 7482 1555
www.carolhayesmanagement.co.uk



01 设计师: Christian Dior Haute Couture
 02 发型师: Katsumasa Eto
 03 配饰: Coppola Pique Haute Couture



01 设计师: Chanel Haute Couture
 02 配饰: Uncommon Mothers
 03 设计师: Chanel Haute Couture
 04 配饰: As By Aoioko Sano



Miha Oshima
Editorial

**CAROLHAYES
MANAGEMENT**
CREATIVE ARTIST & STYLE MANAGEMENT

020 7482 1555
www.carolhayesmanagement.co.uk



W I N T E R ' S
R ◉ S E

Upstaging all other hues, red makes an impassionate comeback like a past lover knocking down your door. Demanding attention and the leading role, play with pigmentation and shading to conjure up power and unrivaled beauty.

Photographed by Remi Kozdra and Kaia Baczula
Makeup artist Cyril Laine

Complexion: Perfection Lumière Velvet N°40
Bride: Les Brides Black N°28 | Eyes: Rouge
Duo: Intense N°100 Milky Shimmer, Nocturne
Extrême N°100 Not For Pure Black, La Pierre
Dessiné et produit par Dior Cosmetics, Paris

Miha Oshima
Editorial

CAROLHAYES
MANAGEMENT
CREATIVE ARTIST & STYLE MANAGEMENT

020 7482 1555
www.carolhayesmanagement.co.uk

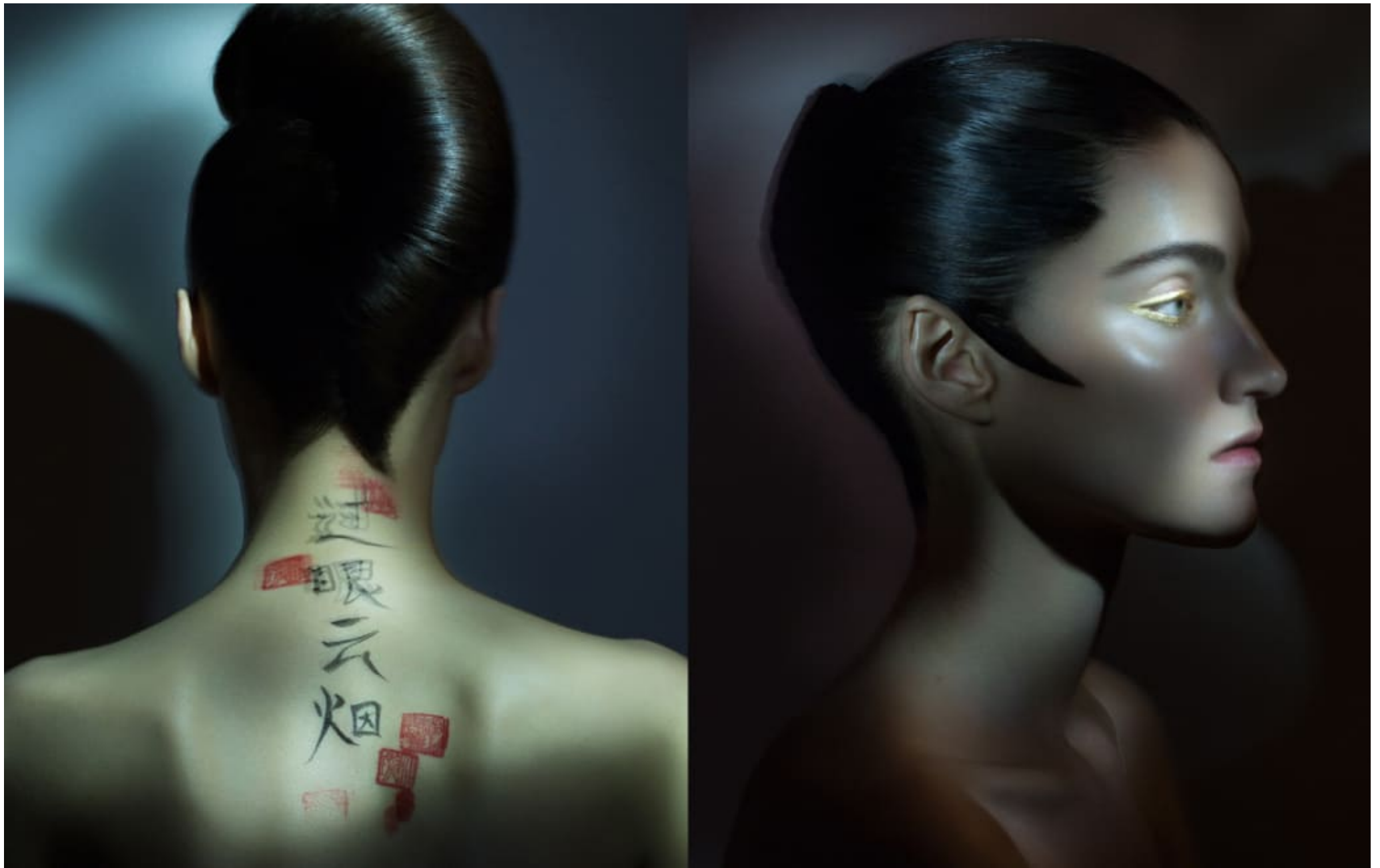


Complexion, Rouge Coco Shine N°99 Filt, Joses
Contraste N°503 Rouge Profond | Eyes, Le Crayon
Khol N°82 Ardère, Fusion d'Orbire N°128 Rouge
Brûlé, Dimension de CHANEL N°40 Subversif, La
Palette Sourcils de CHANEL N°45 Naturel | Lips,
Rouge Coco Shine N°487 Intéride | Hair, La Verme
Longue Tenue N°288 Rouge Pûissant, CHANEL beauty

Miha Oshima
Editorial

CAROLHAYES
MANAGEMENT
CREATIVE ARTIST & STYLE MANAGEMENT

020 7482 1555
www.carolhayesmanagement.co.uk



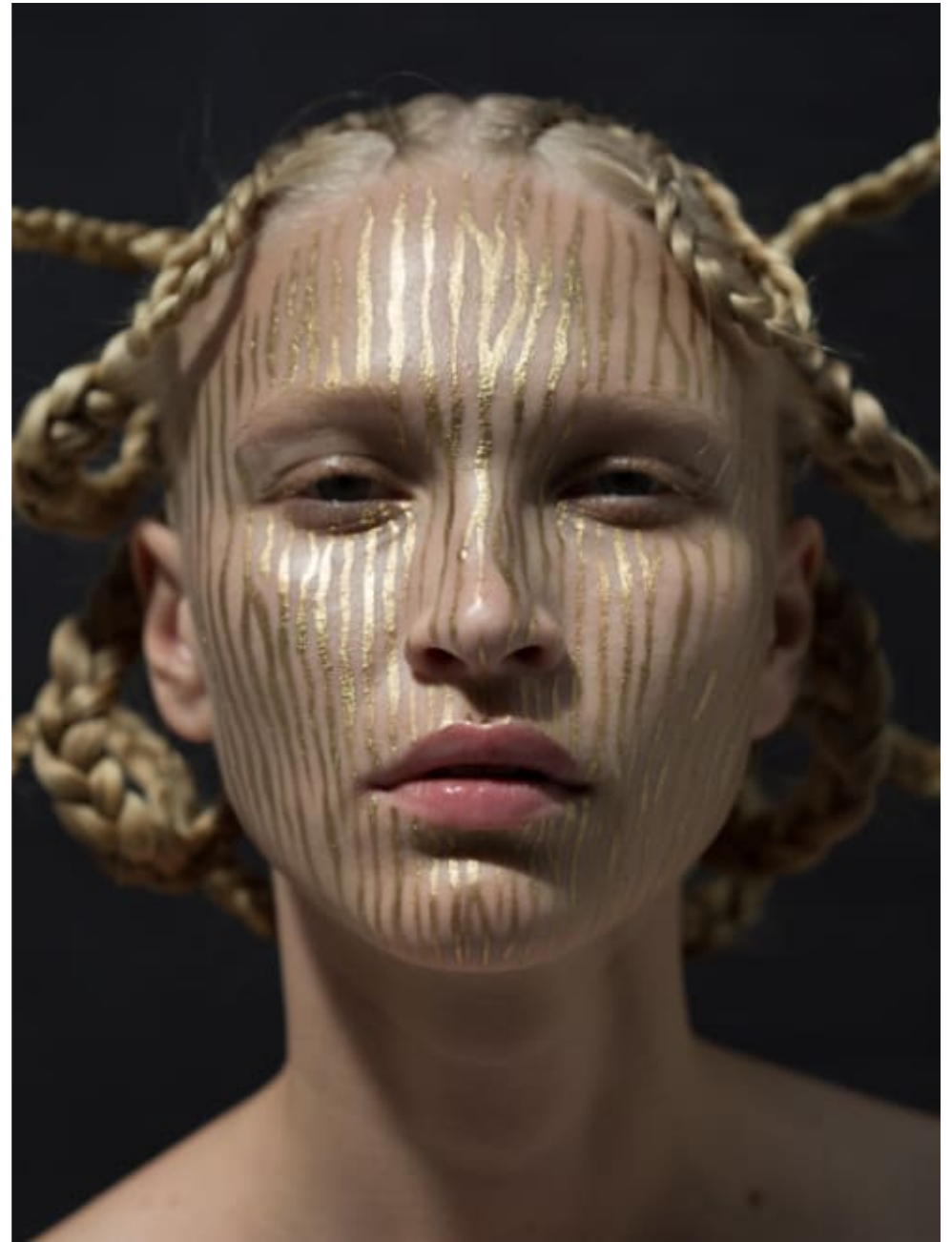
Miha Oshima
Editorial

CAROLHAYES
MANAGEMENT
CREATIVE ARTIST & STYLE MANAGEMENT

020 7482 1555
www.carolhayesmanagement.co.uk



Miha Oshima
Editorial

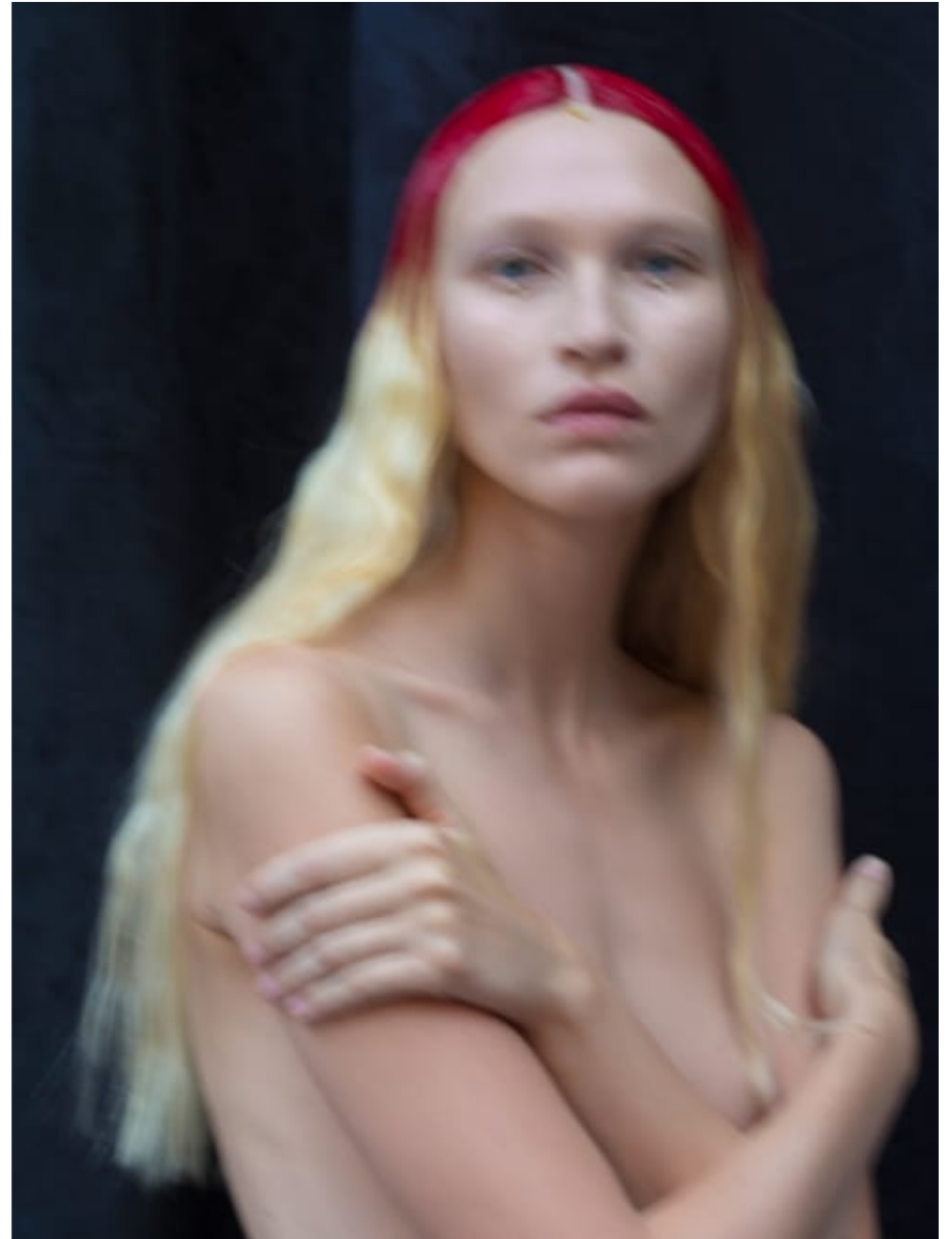


**CAROLHAYES
MANAGEMENT**
CREATIVE ARTIST & STYLE MANAGEMENT

020 7482 1555
www.carolhayesmanagement.co.uk



Miha Oshima
Editorial

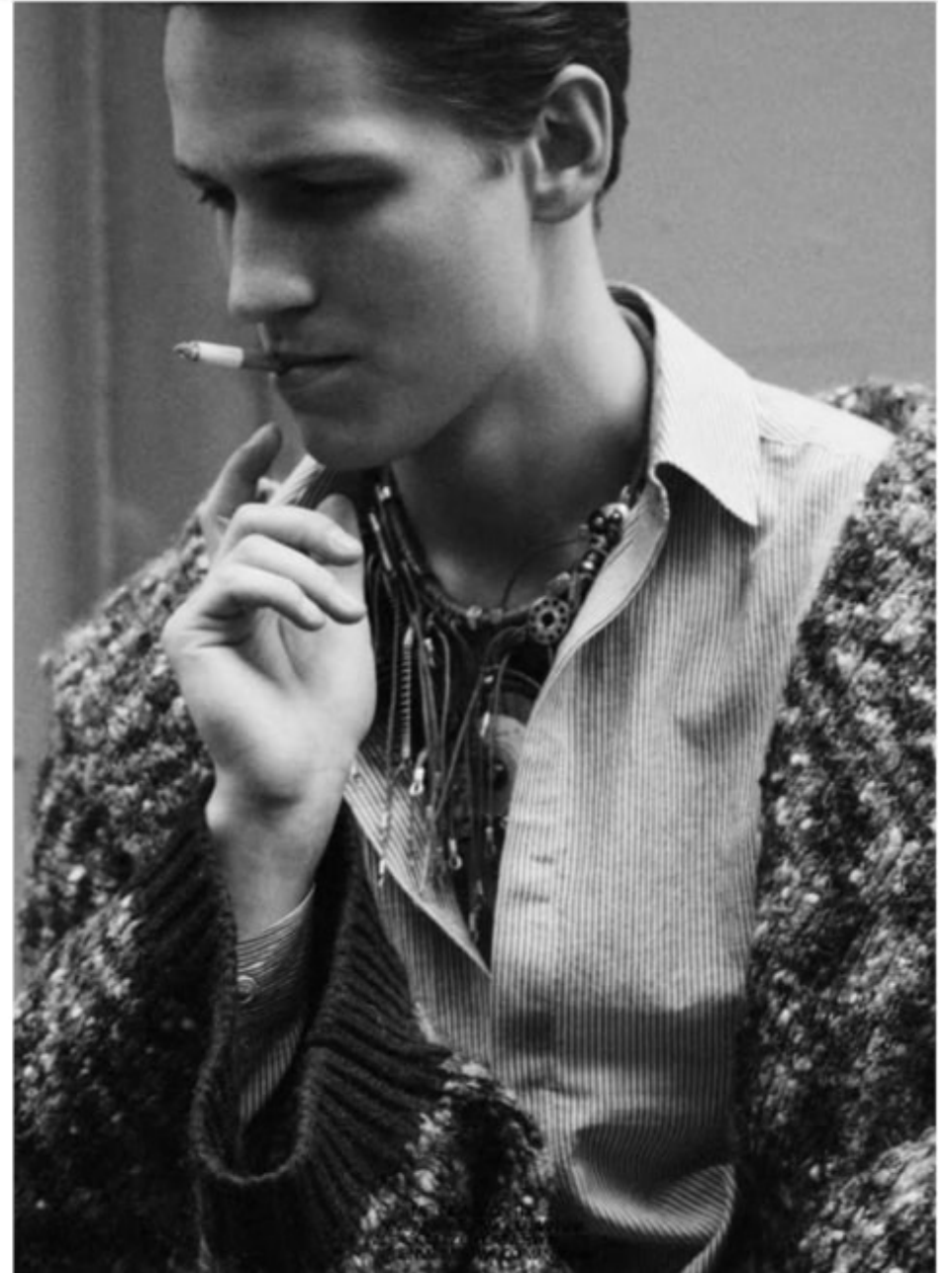


CAROLHAYES
MANAGEMENT
CREATIVE ARTIST & STYLE MANAGEMENT

020 7482 1555
www.carolhayesmanagement.co.uk

LE
REVOL
UTIONAIRE

PHOTO : ALICE ROSATI
STYLED BY LUBNA BALAZOVA
GROOMING: MIHA OSHIMA
MODEL : PETER BRUDER © FORD PARIS





Miha Oshima
Editorial

CAROLHAYES
MANAGEMENT
CREATIVE ARTIST & STYLE MANAGEMENT

020 7482 1555
www.carolhayesmanagement.co.uk



Chemise et veste,
Gucci. Boucle
d'oreille «Serpent
Bulnes», Baucheron.
À sa main gauche:
bagues «Serpent
Bulnes», Baucheron.
À sa main droite:
bague «Fuzzy, le chat
leopard», Baucheron.

Miha Oshima
Editorial

**CAROLHAYES
MANAGEMENT**
CREATIVE ARTIST & STYLE MANAGEMENT

020 7482 1555
www.carolhayesmanagement.co.uk



COVERSTORY

Yeux, gilet et
 pantalon, Gucci.
 Écharpe, Christian
 Louboutin, Soie
 d'oreille «Serpent
 Bohème», Boucheron.
 À sa main gauche
 bague «Mars, le
 caméléon», Boucheron.
 Bague «Serpent
 Bohème», Boucheron.
 Bague «Hercule,
 le colibri saphir
 bleu», Boucheron.
 À sa main droite
 bague «Serpent
 Bohème», Boucheron.

Mise en beauté
 Al Ché pour Dior
 avec le Fond de Teint
 Dior Backstage Face & Body
 Foundation Neutral,
 Dior Backstage Concealer
 Palette, Dior Backstage
 Eye Palette cool neutral,
 Mascara Diorshow
 Pump'n'Volume noir
 et Dior Addict Lacquer
 Pump'n'Level-Up.

Miha Oshima
 Editorial



Blouse et jupe,
 Saint Laurent par
 Anthony Vaccarello.
 Pendentif sur chaîne
 «Serpent Bohème»,
 Boucheron.
 Boucle d'oreille
 «Serpent Bohème»,
 Boucheron. Bague
 «Serpent Bohème»,
 Boucheron.

Mise en beauté
 Al Ché pour Dior
 avec le Fond de Teint
 Dior Backstage
 Face & Body
 Foundation Neutral,
 Dior Backstage
 Concealer Palette,
 Dior Backstage Eye
 Palette cool neutral,
 Mascara Diorshow
 Pump'n'Volume noir,
 Dior Addict Lacquer
 Pump'n'Level-Up.

Assistante styliste
 Margaret Peltzer
 et Malika Elmer
 Coiffure
 Mikera Dahlia
 Maquillage
 Al Cho

Merci à l'hôtel
 The New Otani
 à Tokyo pour nous
 avoir accueillie
 dans son jardin.
 www.newotani.co.jp



Toutes les couleurs
de la terre s'exposent sur
la peau, offrant
une infinité de nuances
rayonnantes.

Made in beauty technology par Olaya. Tous les visages sont uniques. L'art de la beauté est un art de vivre. L'art de la beauté est un art de vivre. L'art de la beauté est un art de vivre.



Miha Oshima
Editorial

**CAROLHAYES
MANAGEMENT**
CREATIVE ARTIST & STYLE MANAGEMENT

020 7482 1555
www.carolhayesmanagement.co.uk



Miha Oshima
Editorial

**CAROLHAYES
MANAGEMENT**
CREATIVE ARTIST & STYLE MANAGEMENT

020 7482 1555
www.carolhayesmanagement.co.uk



Miha Oshima
Editorial

**CAROLHAYES
MANAGEMENT**
CREATIVE ARTIST & STYLE MANAGEMENT

020 7482 1555
www.carolhayesmanagement.co.uk



Miha Oshima
Editorial

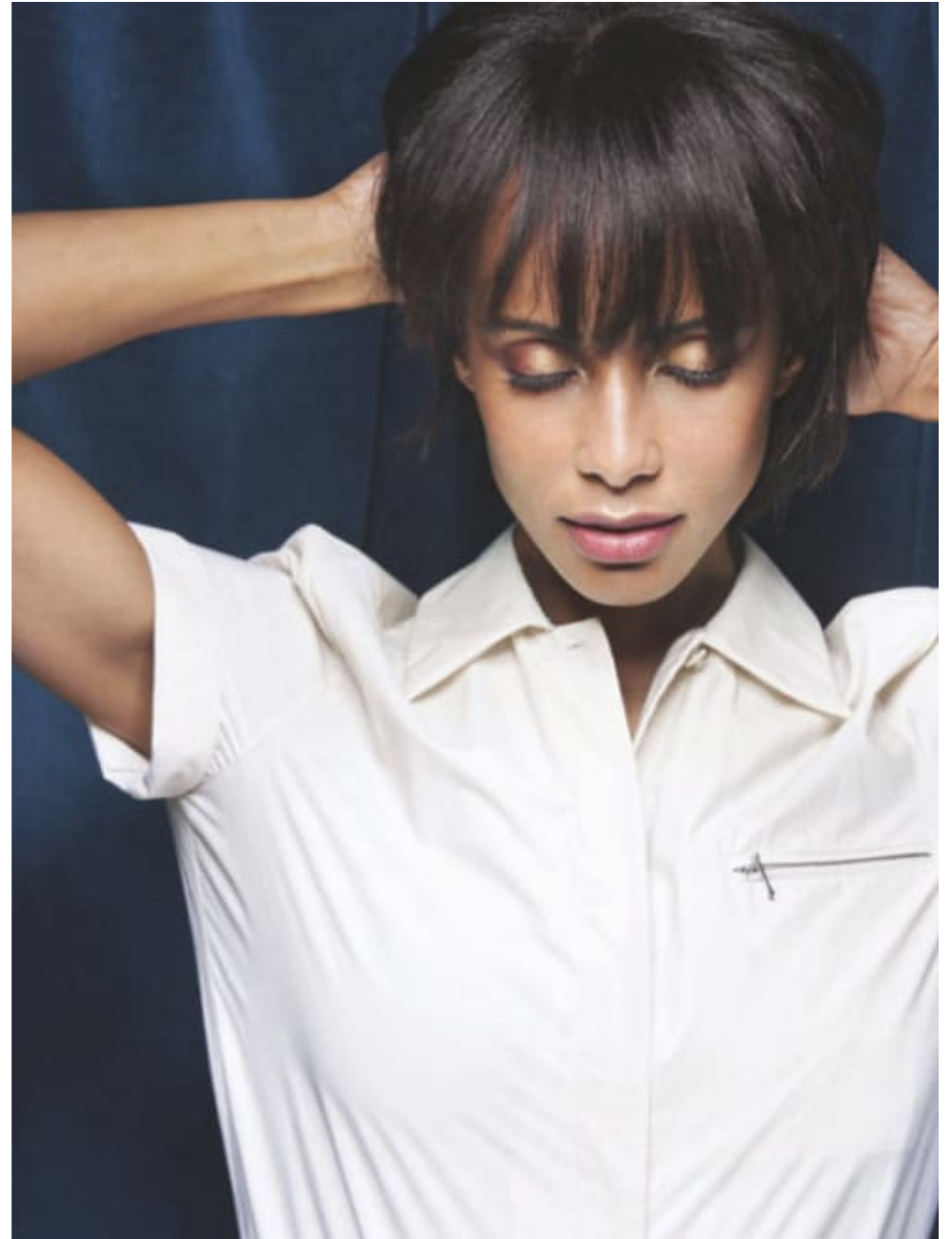


CAROLHAYES
MANAGEMENT
CREATIVE ARTIST & STYLE MANAGEMENT

020 7482 1555
www.carolhayesmanagement.co.uk



Miha Oshima
Editorial



CAROLHAYES
MANAGEMENT
CREATIVE ARTIST & STYLE MANAGEMENT

020 7482 1555
www.carolhayesmanagement.co.uk